

WEST BANK CLOSURE - HEBRON OLD CITY

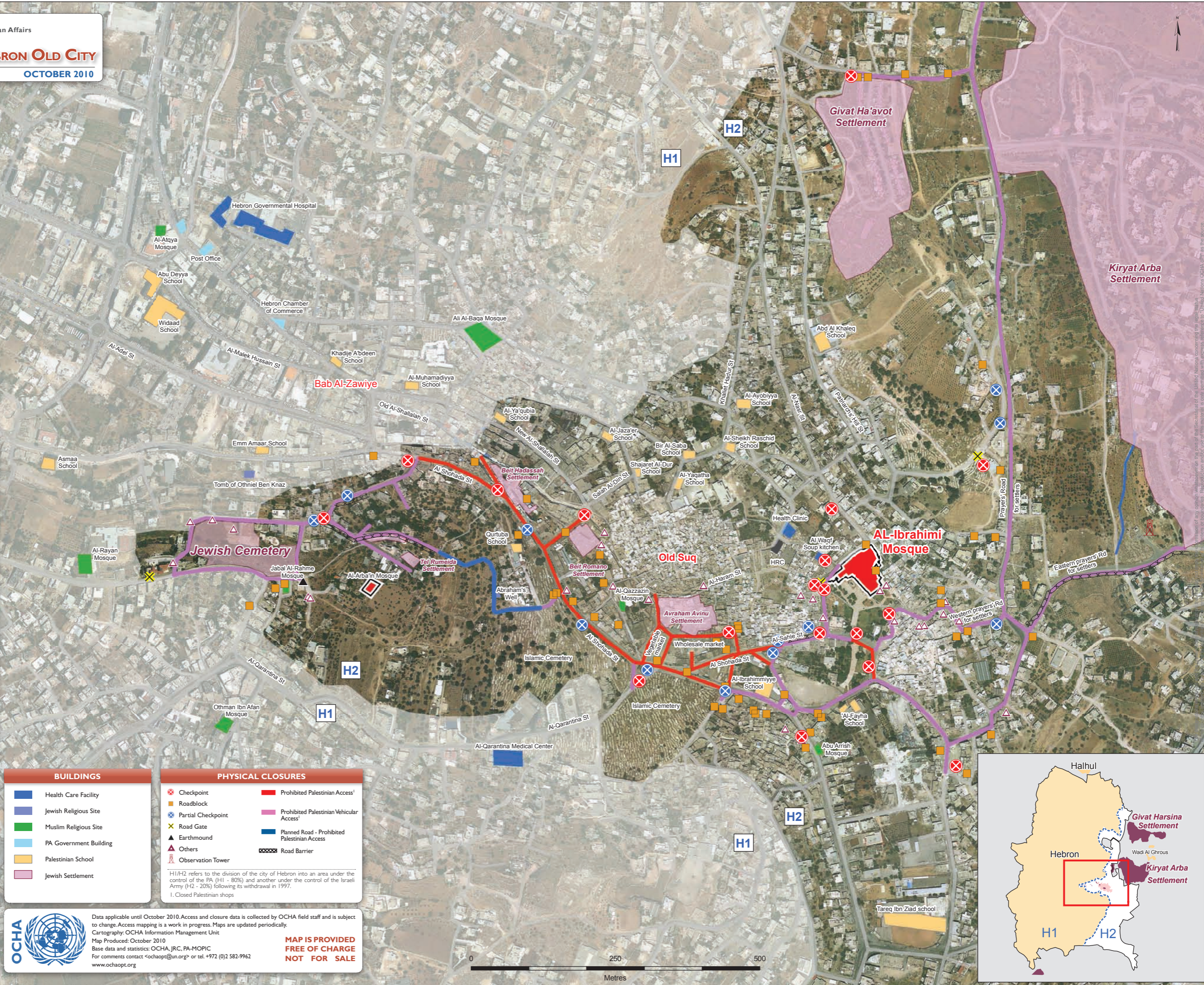
OCTOBER 2010

HEBRON H2 CLOSURES

Checkpoints	18
Green Line Checkpoints	-
Partial Checkpoints	13
Earthmounds	1
Roadblocks	55
Road Gates	6
Trenches	-
Earth Walls	-
Road Barriers	3
Others	26 ¹
Total	122**

*E.g.: Barbed wire, turnstile, iron gate, cement barriers.

**Data is based on October 2010 comprehensive field survey.



BUILDINGS

- Health Care Facility
- Jewish Religious Site
- Muslim Religious Site
- PA Government Building
- Palestinian School
- Jewish Settlement

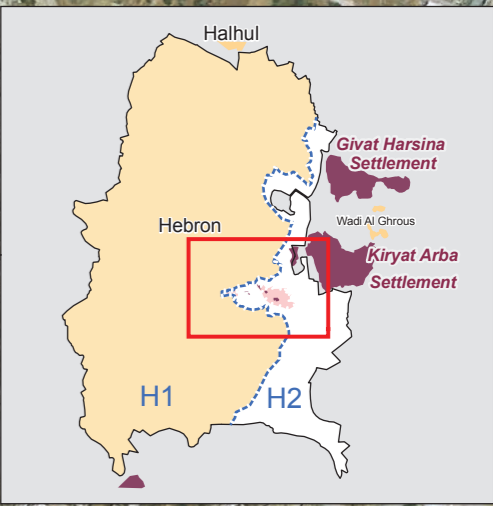
PHYSICAL CLOSURES

- Checkpoint
- Roadblock
- Partial Checkpoint
- Road Gate
- Earthmound
- Others
- Observation Tower
- Prohibited Palestinian Access¹
- Prohibited Palestinian Vehicular Access¹
- Planned Road - Prohibited Palestinian Access
- Road Barrier

¹H1/H2 refers to the division of the city of Hebron into an area under the control of the PA (H1 - 80%) and another under the control of the Israeli Army (H2 - 20%) following its withdrawal in 1997.
²Closed Palestinian shops

Data applicable until October 2010. Access and closure data is collected by OCHA field staff and is subject to change. Access mapping is a work in progress. Maps are updated periodically.
Cartography: OCHA Information Management Unit
Map Produced: October 2010
Base data and statistics: OCHA, JRC, PA-MOPIC
For comments contact <ochaopt@un.org> or tel. +972 (0)2 582-9962
www.ochaopt.org

MAP IS PROVIDED FREE OF CHARGE NOT FOR SALE



Permission of any copyright holder in the use of the map is required. The United Nations Office for the Coordination of Humanitarian Affairs (OCHA) is not responsible for any errors or omissions in this map.