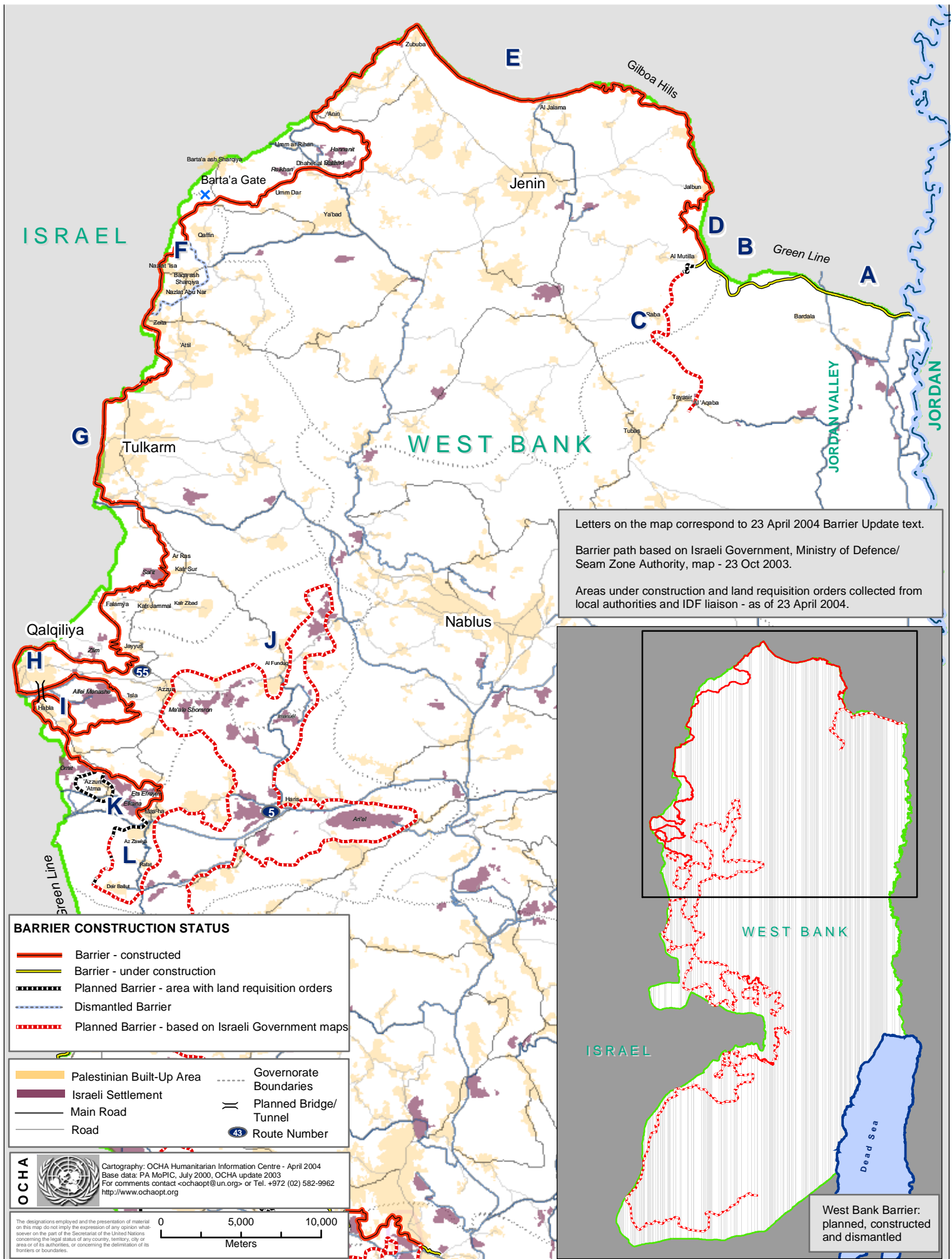


North West Bank Barrier - April 2004

| JENIN | TULKAREM | QALQILIYA | SALFIT |



Letters on the map correspond to 23 April 2004 Barrier Update text.

Barrier path based on Israeli Government, Ministry of Defence/ Seam Zone Authority, map - 23 Oct 2003.

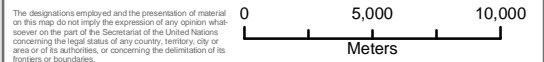
Areas under construction and land requisition orders collected from local authorities and IDF liaison - as of 23 April 2004.

BARRIER CONSTRUCTION STATUS

- Barrier - constructed
- Barrier - under construction
- - - - Planned Barrier - area with land requisition orders
- - - - Dismantled Barrier
- · - · - Planned Barrier - based on Israeli Government maps

- Palestinian Built-Up Area
- Israeli Settlement
- Main Road
- Road
- Governorate Boundaries
- Planned Bridge/Tunnel
- 43 Route Number

OCHA Cartography: OCHA Humanitarian Information Centre - April 2004
 Base data: PA MoPIC, July 2000, OCHA update 2003
 For comments contact <ochaopt@un.org> or Tel. +972 (02) 582-9962
<http://www.ochaopt.org>



West Bank Barrier:
planned, constructed
and dismantled

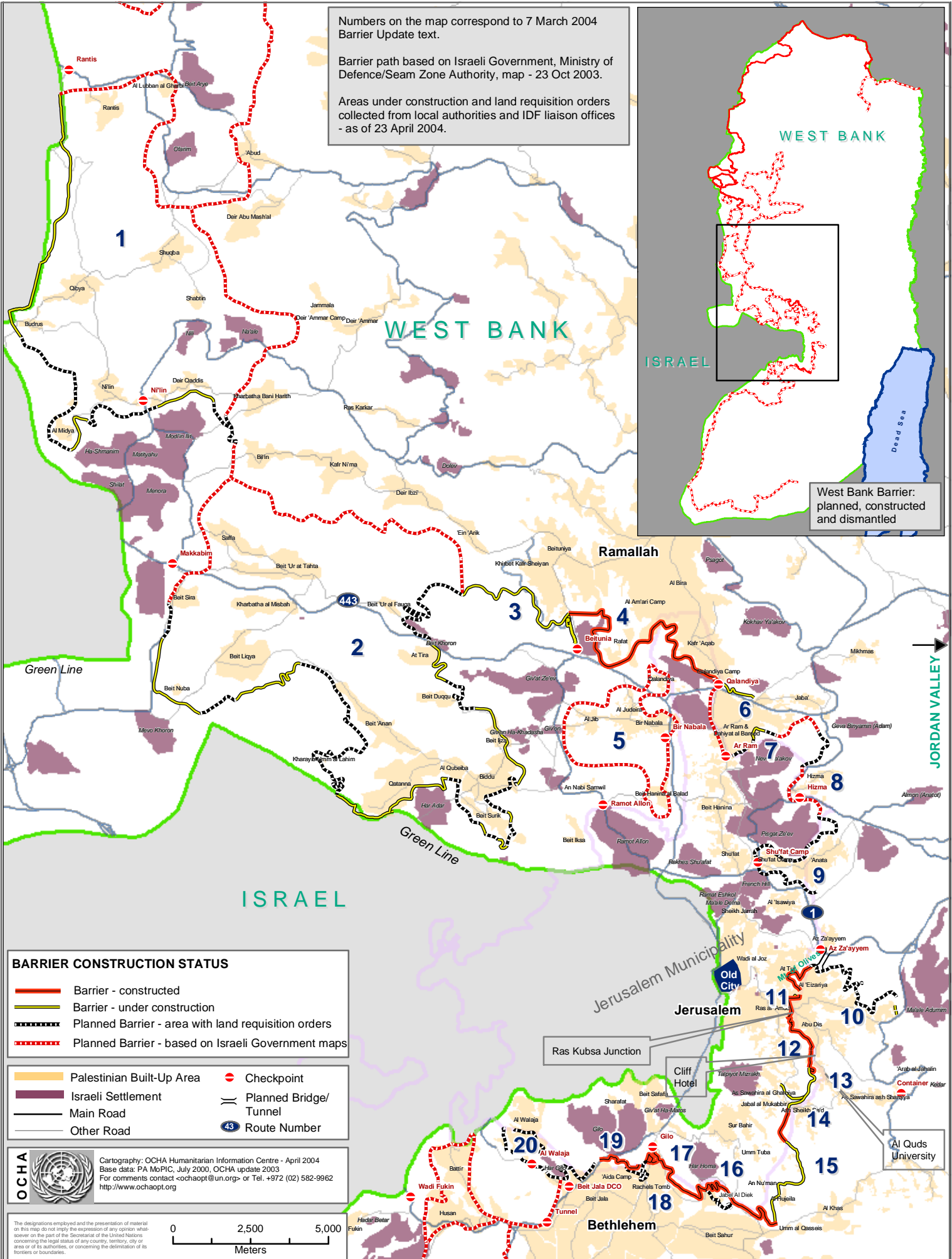
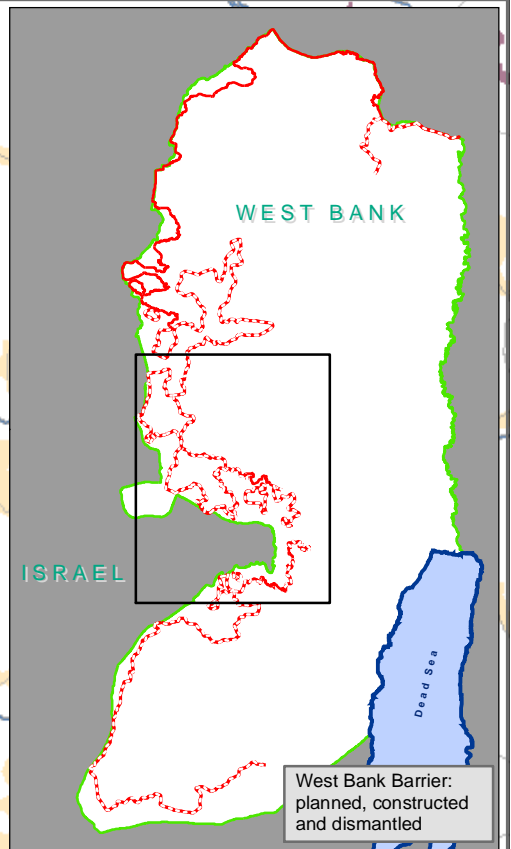
Central West Bank Barrier - April 2004

| JERUSALEM | RAMALLAH | BETHLEHEM |

Numbers on the map correspond to 7 March 2004 Barrier Update text.

Barrier path based on Israeli Government, Ministry of Defence/Seam Zone Authority, map - 23 Oct 2003.

Areas under construction and land requisition orders collected from local authorities and IDF liaison offices - as of 23 April 2004.

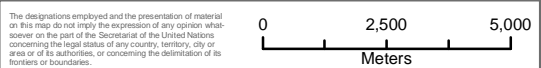


BARRIER CONSTRUCTION STATUS

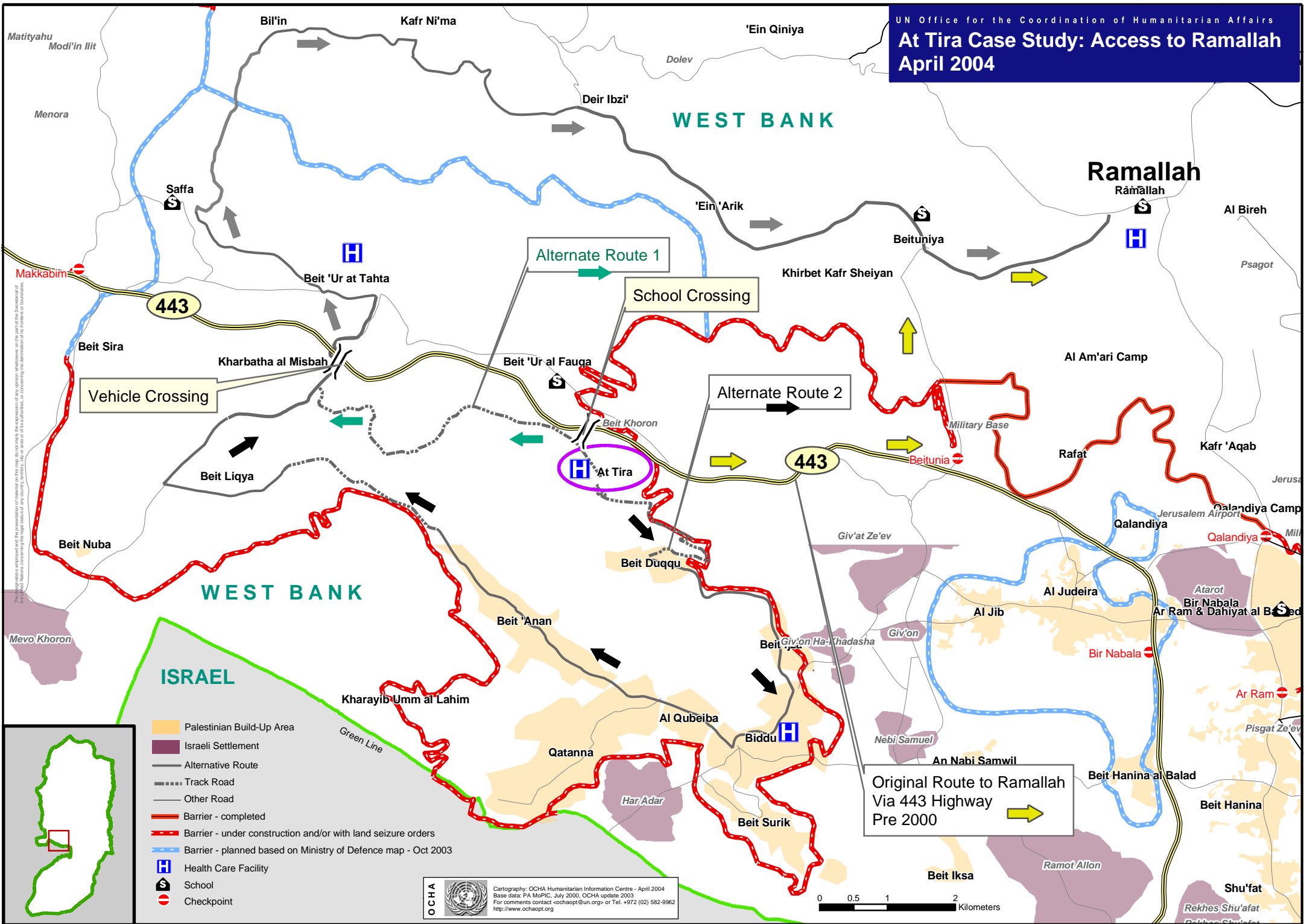
- Barrier - constructed
- Barrier - under construction
- Planned Barrier - area with land requisition orders
- Planned Barrier - based on Israeli Government maps

- Palestinian Built-Up Area
- Israeli Settlement
- Main Road
- Other Road
- Checkpoint
- = Planned Bridge/Tunnel
- 43 Route Number

OCHA Cartography: OCHA Humanitarian Information Centre - April 2004
 Base data: PA MoPIC, July 2000, OCHA update 2003
 For comments contact <ochaopt@un.org> or Tel. +972 (02) 582-9962
<http://www.ochaopt.org>



The designations employed and the presentation of material on this map do not imply the expression of any opinion whatsoever on the part of the Secretariat of the United Nations concerning the legal status of any country, territory, city or area or of its authorities, or concerning the delimitation of its frontiers or boundaries.



This map is based on the information provided by the OCHA Humanitarian Information Centre. The OCHA Humanitarian Information Centre is not responsible for any errors or omissions in this map. The OCHA Humanitarian Information Centre is not responsible for any damage or loss of property that may result from the use of this map.

- Palestinian Build-Up Area
- Israeli Settlement
- Alternative Route
- Track Road
- Other Road
- Barrier - completed
- Barrier - under construction and/or with land seizure orders
- Barrier - planned based on Ministry of Defence map - Oct 2003
- Health Care Facility
- School
- Checkpoint