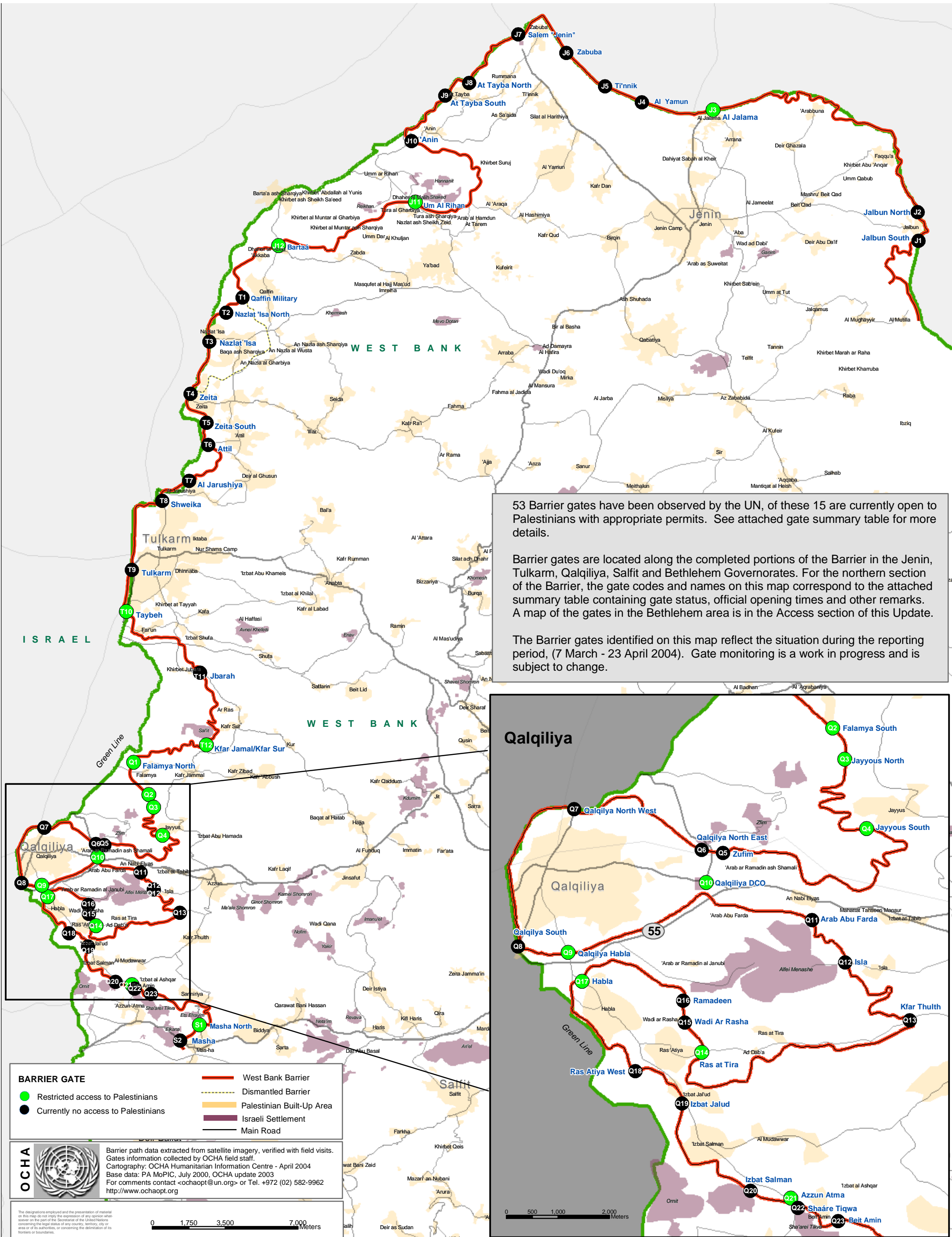


BARRIER GATES: Northern West Bank

April 2004



53 Barrier gates have been observed by the UN, of these 15 are currently open to Palestinians with appropriate permits. See attached gate summary table for more details.

Barrier gates are located along the completed portions of the Barrier in the Jenin, Tulkarm, Qalqiliya, Salfit and Bethlehem Governorates. For the northern section of the Barrier, the gate codes and names on this map correspond to the attached summary table containing gate status, official opening times and other remarks. A map of the gates in the Bethlehem area is in the Access section of this Update.

The Barrier gates identified on this map reflect the situation during the reporting period, (7 March - 23 April 2004). Gate monitoring is a work in progress and is subject to change.

BARRIER GATE

- Restricted access to Palestinians
- Currently no access to Palestinians

- West Bank Barrier
- Dismantled Barrier
- Palestinian Built-Up Area
- Israeli Settlement
- Main Road

OCHA Barrier path data extracted from satellite imagery, verified with field visits. Gates information collected by OCHA field staff. Cartography: OCHA Humanitarian Information Centre - April 2004. Base data: PA MoPIC, July 2000, OCHA update 2003. For comments contact <ochaopt@un.org> or Tel. +972 (02) 582-9962. <http://www.ochaopt.org>

The designations employed and the presentation of material on this map do not imply the expression of any opinion whatsoever on the part of the Secretariat of the United Nations concerning the legal status of any country, territory, city or area or of its authorities, or concerning the delimitation of its frontiers or boundaries.

0 1,750 3,500 7,000 Meters

0 500 1,000 2,000 Meters

West Bank Barrier Gate Summary

7 March - 23 April 2004

	Name/Location	Gate Code (see map)	Gate Type	Remarks	Governorate/ Location	Gate currently used by Palestinians	Special Case (see footnote)
1	Jalbun South	J1	Military	This gate is only open and used by military personnel.	Jenin	No	
2	Jalbun North	J2	Military	This gate is only open and used by military personnel.	Jenin	No	
3	Al Jalama	J3	Checkpoint	This gate constitutes a checkpoint with restricted access to Israel proper and functions also as commercial back-to-back. Official opening hours are 7:00-19:00.	Jenin	Yes	
4	Al Yamun	J4	Military	This gate is only open and used by military personnel.	Jenin	No	
5	Ti 'nik	J5	Military	This gate is only open and used by military personnel.	Jenin	No	
6	Zabuba	J6	Military	This gate is only open and used by military personnel.	Jenin	No	
7	Salem	J7	Military	This gate is the entrance to the Jenin DCL office and military base. Palestinians are allowed to use this gate to visit the DCL office.	Jenin	No	
8	At Tayba North	J8	Agriculture	Gate is reported to be open seasonally (October) for access to olive groves.	Jenin	No	
9	At Tayba South	J9	Military	This gate is only open and used by military personnel.	Jenin	No	
10	Anin	J10	Agricultural	Gate is reported to be open seasonally (October) for access to olive groves.	Jenin	No	
11	Um al Rihan	J11	Checkpoint/Road	This gate is open to green permit holders. Official opening hours are 6:00-22:00.	Jenin	Yes	
12	Barta'a	J12	Checkpoint/Road	This gate is open to green permit holders. Official opening hours are 6:00-22:00.	Jenin	Yes	
13	Qaffin Military	T1	Military	This gate is reported to be open seasonally for access to farmland during harvest times. This gate is currently closed and only used by military personnel.	Tulkarm	No	
14	Nazlat Isa North	T2	Agriculture	This gate is reported to be open seasonally for access to farmland during harvest times.	Tulkarm	No	
15	Nazlat 'Isa	T3	Checkpoint	This gate constitutes a checkpoint from the West Bank into Israel proper. The gate is currently only used by Nazlat 'Isa students and residents located west of the Barrier, some settlers from Khemesh and Mevo Dolan and International Organizations. The gate is currently closed for everyone else. All other requests to cross this gate are being redirected through Barta'a gate in Jenin. The gate remains manned 24 hours.	Tulkarm	No*	
16	Zeita	T4	Military	This gate is reported to be open seasonally for access to farmland during harvest times. This gate is currently closed and only used by military personnel.	Tulkarm	No	
17	Zeita South	T5	Agriculture	This gate has been closed for several months. It has no official opening hours.	Tulkarm	No	
18	Attil	T6	Agriculture	This gate is physically closed with barbed wire.	Tulkarm	No	
19	Al Jarushiya	T7	Agriculture	This gate is officially open to farmers with green permits, however not currently used. Official opening hours are 7:00-7:20, 9:00-9:20, 12:00-12:20, 15:00-15:20 and 18:00-18:20	Tulkarm	No	X
20	Shweika	T8	Agriculture	This gate is opened in principle to farmers with green permits. But in practice, the gate is only open to one family isolated on the west side of the Barrier. The IDF are reported to rarely keep the official opening hours, leaving the family to coordinate movement through Barrier in advance. Access through the gate has a direct effect on the family's school aged children who attend classes in Tulkarm. Medical staff also need prior coordination with the IDF. Official opening hours are 7:00-9:00 and 15:00-17:00	Tulkarm	No*	
21	Tulkarm	T9	Military	This gate is only open and used by military personnel.	Tulkarm	No	
22	Taybeh	T10	Checkpoint	This gate acts as a checkpoint to Israel proper, restricting access for Palestinians. This gate also functions as commercial back-to-back point. Since mid-March the gate has been operating at a reduced level, only allowing passage to commercial trucks and International Organizations. However during recent Israeli holidays there was a full suspension of all work and trade permits into Israel. Official opening hours are 7:00-17:00.	Tulkarm	Yes	
23	Jbarah	T11	School	The status of this gate has changed since the last Barrier Update (March). A bus rented by the IDF is now collecting the elementary school children from Jbarah, delivering them to schools in Kfar Sur and Ar Ras through Kafriat checkpoint. The school bus only stops in these two villages, therefore school children who attend school in Kfar Zibad (approx. 6 KM distance) must make their way to and from the collection point using public transport.	Tulkarm	No*	
24	Kfar Jamal/Kfar Sur	T12	Agriculture	This gate is open to farmers with green permits who have livestock from Kfar Sur. Official opening hours are 7:00 and 16:00, closing immediately after the farmers have crossed the gate.	Tulkarm	Yes	
25	Falameya North	O1	Agriculture	This gate is open to farmers with green permits. Official opening hours are 7:00-8:30, 12:30-13:30 and 17:00-18:30.	Qalqiliya	Yes	
26	Falameya South	O2	Agriculture	This gate is open to farmers with green permits. Official opening hours are 6:20-6:40, 12:15-12:30 and 16:00-16:15.	Qalqiliya	Yes	
27	Jayyous North	O3	Agriculture	This gate is open to farmers with green permits. Official opening hours are 7:00-8:30, 12:30-13:30 and 17:00-18:30.	Qalqiliya	Yes	
28	Jayyous South	O4	Agriculture	This gate is used by one family residing behind the Barrier. The family includes 6 school children who attend classes in Jayyous and 5 farmers who are allowed to graze approximately 300 livestock on the opposite side of the Barrier. This gate is open between 7:25-8:00, 12:55-13:20 and 16:40-16:50.	Qalqiliya	Yes	
29	Zufim	O5	Agriculture/Settlement	This gate is officially open to farmers with green permits, however not currently used. The gate is manned by soldiers around the clock.	Qalqiliya	No	X
30	Qalqiliya North East	O6	Military	This gate is physically closed with barbed wire.	Qalqiliya	No	
31	Qalqiliya North West	O7	Military	This gate is only open and used by military personnel.	Qalqiliya	No	
32	Qalqiliya South	O8	Military	This gate is only open and used by military personnel.	Qalqiliya	No	
33	Qalqiliya Habla	O9	Agriculture	This gate is open to farmers with green permits. Teachers are also allowed to use this gate, however, movement restrictions on the Israeli controlled part of road 55, from Jaljoulia checkpoint, redirect travel through Qalqiliya DCO Barrier checkpoint and Azzun to reach schools in the Habla area. Official opening hours are 6:30-7:45, 12:00-13:15 and 15:45-17:00	Qalqiliya	Yes	
34	Qalqiliya DCO	O10	Road	This gate is open to all West Bank residents, no green permit is required. The gate functions as a partial Barrier checkpoint, manned by the IDF occasionally. Qalqiliya DCO Barrier gate is the only road to access the city of Qalqiliya, an enclave within the West Bank. The gate has been manned since the killing of Hamas leader Abdul Aziz Rantisi on 17 April 2004. Major delays have been reported at this crossing as all pedestrians and vehicles are subject to thorough searches.	Qalqiliya	Yes	
35	'Arab Abu Farda	O11	Military	This gate is only open and used by military personnel.	Qalqiliya	No	
36	Isla	O12	Agriculture	This gate is officially open to farmers with green permits, however not currently used. Official opening hours are 7:00-7:20, 13:00-13:20 and 16:40-17:00.	Qalqiliya	No	X
37	Kfar Thulth	O13	Agriculture	This gate is officially open to farmers with green permits, however not currently used. Official opening hours are 6:30-6:50, 12:30-12:50 and 16:10-16:30.	Qalqiliya	No	X
38	Ras at Tira	O14	Road/School	This gate is used by school children from Ras at Tira and Ad Daba who attend classes in Ras Atiya and Habla. Opening hours correspond to school hours. Residents of Ad Daba and Ras at Tira with green permits are permitted to cross this gate in vehicles. Official opening hours are 6:30-7:45, 12:30-13:45 and 15:45-17:00.	Qalqiliya	Yes	
39	Wadi Ar Rasha	O15	School	The status of this gate has changed since the last Barrier Update (March). Buses rented by the IDF are now collecting the elementary school children from Arab Abu Farda, Ramadeen and Wadi Ar Rasha and delivering the children to schools in An Nabi Elyas and Habla. The children are being collected every morning at 7:00 and transported back every afternoon after school. The gate is closed for all other residents.	Qalqiliya	No*	
40	Ramadeen	O16	School	The status of this gate has changed since the last Barrier Update (March). Buses rented by the IDF are now collecting the elementary school children from Arab Abu Farda, Ramadeen and Wadi Ar Rasha and delivering the children to schools in An Nabi Elyas and Habla. The children are being collected every morning at 7:00 and transported back every afternoon after school. The gate is closed for all other residents.	Qalqiliya	No*	
41	Habla	O17	Agriculture	This gate is open to farmers with green permits. Teachers are also allowed to use this gate, however, movement restrictions on the Israeli controlled part of road 55, from Jaljoulia checkpoint, redirect travel through Qalqiliya DCO Barrier checkpoint and Azzun to reach schools in the Habla area. PRCS ambulances need prior coordination with the IDF through the ICRC to obtain permission to cross this gate. Official opening hours are 6:30-7:45, 12:00-13:15 and 15:45-17:00.	Qalqiliya	Yes	
42	Ras Atiya West	O18	Military	This gate is only open and used by military personnel.	Qalqiliya	No	
43	Izbat Jalud	O19	Agriculture	This gate is officially open to farmers with green permits, however not currently used. Official opening hours are 6:00-6:20, 12:00-12:20 and 16:00-16:15.	Qalqiliya	No	X
44	Izbat Salman	O20	Agriculture	This gate is officially open to farmers with green permits, however not currently used. Official opening hours are 6:45-6:55, 12:00-12:15 and 17:35-17:45.	Qalqiliya	No	X
45	Azzun Alma	O21	Road / Agriculture / School	This gate is primarily used by residents of Azzun Alma; including students, teachers and farmers from the neighboring villages of Sanniriya and Beit Amin. Currently, the IDF does not enforce the green permit requirement for students, teachers and residents of Azzun Alma, however, non-residents are required to present green permits to cross the Barrier. This gate is manned around the clock by soldiers guarding the adjacent gate into Sha'are Tiqwa settlement. Official opening hours are 6:30-21:00.	Qalqiliya	Yes	
46	Sha'are Tiqwa	O22	Military	This gate is located diagonal to the Azzun Alma Barrier gate and used by military personnel only. This gate is manned around the clock.	Qalqiliya	No	
47	Beit Amin	O23	Military	This gate is only open and used by military personnel.	Qalqiliya	No	
48	Masha North	S1	Agriculture	This gate is used by farmers from Masha. Very few farmers from Masha have obtained green permits. The official opening hours are 6:50-7:10, 12:50-13:10 and 16:45-17:00	Salfit	Yes	
49	Masha	S2	Road	This gate was designed to facilitate Masha farmers access to land behind the Barrier, however the path of the Barrier and location of the gate are directly adjacent to Elkana settlement. The IDF currently does not allow Palestinians to use this gate. Alternatively, Masha residents with a green permits are instructed to use Masha North gate. Additionally, a small entrance was made next to the gate to facilitate one family, isolated on the west side of the Barrier, access through the Barrier. This family has access to the entrance key.	Salfit	No	
50	Beit Jala 1	B1	Agricultural	This gate is reported to open seasonally (October) for access to Palestinian owned olive groves.	Bethlehem	No	
51	Beit Jala 2	B2	Agricultural	This gate is reported to open seasonally (October) for access to Palestinian owned olive groves.	Bethlehem	No	
52	Beit Sahour 1	B3	Military	This gate is only open and used by military personnel.	Bethlehem	No	
53	Beit Sahour 2	B4	Military	This gate is currently used by contractors working on the Barrier near an Nu'man. Gate is used to access Jerusalem via Har Homa settlement.	Bethlehem	No	

Footnote: Of the closed gates, six gates fall into a special case: they have official opening hours posted by the IDF, but are not used or rarely used by local residents. When questioned, the residents reported a variety of reasons for not using a particular gate including: lack of green permit; no access to land; fear of Israeli settler harassment; and lack of confidence that the gate will open at scheduled times.

* A star (asterisk) in the 'gate currently used by Palestinians' column of this table indicates a change in gate status since the last reporting period. 5 gates have changed status since the March 2004 update

All information found in this table is reported and validated by UN field teams. These data represent the status of the Barrier gates for the report period of 7 March-23 April 2004.

Bethlehem gate map located in text of document.