



UNITED NATIONS
Office for the Coordination of Humanitarian Affairs
occupied Palestinian territory

The Monthly Humanitarian Monitor

October-November 2012

Overview

Events during October and November were overshadowed by the escalation of hostilities in the Gaza Strip and Israel between 14 and 21 November, which significantly impacted civilian populations on both sides. Nearly 100 Palestinian civilians, including at least 33 children, were killed as a result of Israeli airstrikes and shelling, accounting for more than 60 per cent of all fatalities. Palestinian rockets fired towards Israel resulted in the death of three Israeli civilians. The vulnerability of Palestinian civilians was exacerbated due to the almost total absence of basic protective measures, such as warning systems and bomb shelters - available to civilians in Israel - as well as by the reported practice of Palestinian armed groups shooting from within, or in close proximity to, civilian areas. The violence compounded an already precarious humanitarian situation in Gaza, whereby about 80 per cent of families were already receiving humanitarian assistance prior to this latest escalation.

While hostilities were ongoing and despite the serious security risks, UN agencies continued to ensure, to the extent possible, that beneficiaries received their regular assistance and accessed essential services. Within 48 hours of the ceasefire achieved on 21 November, OCHA launched an Inter-cluster Initial Rapid Assessment (IRA), which was completed by 28 November. Key priorities identified included addressing the shelter and other needs of the approximately 3,000 people still displaced due to the loss of, or severe damage to their homes; the provision of psychosocial support for traumatized children; and the rehabilitation of residences, schools, and productive assets damaged during the violence. Funding requirements to meet those and other priorities through the end of 2012 and the first half of 2013 are estimated at between USD \$72-83 million.

As part of the ceasefire understandings between Hamas and Israel, brokered by Egypt, access to the sea and the restricted areas near the fence separating Gaza and Israel has been eased.

TABLE OF CONTENTS

Escalation in hostilities in Gaza and southern Israel:	3
Ceasefire understandings result in improved access to fishing and farming areas.....	9
Gaza events trigger widespread protests and clashes across the West Bank.....	10
Demolitions and displacement in Area C and East Jerusalem resume.....	12
East Jerusalem hospitals face a severe financial crisis impacting service delivery.....	14

However, no changes have been observed regarding the ongoing restrictions on the movement of people and goods to and from Gaza through the Israeli-controlled Erez and Kerem Shalom crossings.

The reporting period witnessed another major political development, which may have humanitarian consequences: on 29 November, the UN General Assembly upgraded the status of Palestine to a non-member observer state. As stated in the resolution, this is conceived as a step towards the realization of the two-state vision and the resolution of the Israeli-Palestinian conflict. However, Israel strongly opposed the decision. On 30 November, the Israeli government announced the construction of 3,000 new settlement housing units in the West Bank, as well as the advancement of the E1 settlement plan in the strategic area between East Jerusalem and the Ma'ale Adumim settlement. According to Peace Now, in 2012, prior to this announcement, there had been a threefold increase in the number of new settler housing units issued for tender, compared to 2011. Settlements are illegal under international law and have significant humanitarian consequences for Palestinian communities.

Settlement expansion may also exacerbate two problematic trends observed in the West Bank since the beginning of 2012 and accelerated during the reporting period: rising protests and clashes, and demolitions and displacement. The escalation in hostilities in Gaza triggered dozens of violent demonstrations in the West Bank, during which two Palestinians were killed and 690 others were injured. Since the start of the year a total of 2,865 Palestinians have been injured by Israeli forces in the West Bank, a 120 and 167 per cent increase compared to the equivalent periods in 2011 and 2010. Nearly 60 per cent of injuries in 2012 were due to tear gas inhalation.

Following an almost complete halt in September, during the reporting period the Israeli authorities demolished 117 Palestinian-owned structures in Area C and East Jerusalem, on the grounds of lack of building permits. There is concern that the approval of the E1 plan may expedite plans to transfer 20 Bedouin communities located within and next to the area designated for the plan, in contravention of international law.

Also following the UNGA resolution, senior Israeli officials announced the withholding of tax monies that Israel collects on behalf of the Palestinian Authority (PA). This is expected to further compound the financial crisis facing the PA. The impact is already being felt in the health sector; several of the East Jerusalem hospitals, major providers of referral health care for Palestinians in the oPt, have been forced to take extraordinary measures, such as releasing staff, reducing the number of admissions and curtailing services, because of the PA's inability to pay its increasing debt to the hospitals.

Despite their negative repercussions, the major developments during the reporting period (the Gaza hostilities and the UNGA resolution on Palestine) have also generated valuable opportunities to address the root causes of humanitarian vulnerability in the oPt. The ceasefire understandings between Israel and Hamas provide a framework for progress towards a full lifting of the Gaza blockade. Similarly, the upgrading of Palestine's status could serve as a starting point for the resumption of direct negotiations with Israel over a final status agreement, alongside a halt in settlement activities and demolition of Palestinian homes and livelihood-related structures, as well as the improvement of Palestinian access to land and resources in Area C.

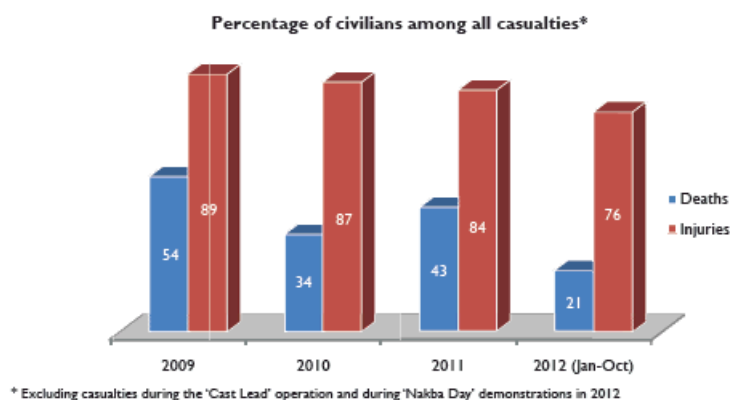
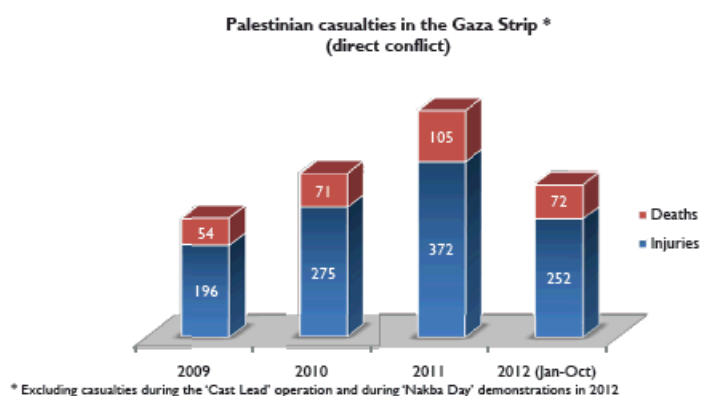
ESCALATION IN HOSTILITIES IN GAZA AND SOUTHERN ISRAEL: 14- 21 NOVEMBER 2012

On 14 November at approximately 1545 hrs, the Israeli Air Force (IAF) launched an airstrike that targeted and killed the acting chief of Hamas' armed wing. This incident marked the opening of a large Israeli military offensive ('Operation Pillar of Defense') in Gaza and a significant increase in rocket firing by Palestinian armed groups into Israel. This escalation in hostilities lasted for eight days, during which the impact on civilians in Gaza and in southern Israel was considerable.

Background

The previous largest Israeli operation in Gaza was launched on 27 December 2008 ('Operation Cast Lead'). While the violence ended on 18 January 2009, no agreement or understanding between the parties was concluded at that time; rather, Israel and the Palestinian armed groups unilaterally declared separate ceasefires.

Between the end of 'Cast Lead' and the start of 'Pillar of Defense', OCHA recorded an average of ten limited escalations in hostilities per year in Gaza, each of which lasted for an average of 2.5 days. The number of Palestinian casualties recorded each year suggests that the intensity of the escalations has been on the rise (see chart). However, while the proportion of Palestinian civilian casualties during this period has remained high, a decreasing trend can be observed, with the proportion of civilian deaths and injuries declining between 2009 and 2012 from 54 to 21 per cent and from 89 to 76 per cent, respectively. Notwithstanding the disruptive impact that Palestinian rocket fire had on the lives of Israeli civilians, the number of Israeli casualties during the period (2009-2012) has remained limited: four fatalities, including two civilians, and 73 injuries, including 55 civilians.



From the beginning of October 2012 until the launching of the 'Pillar of Defense' military operation, there were four rounds of intensified violence, involving Palestinian rockets fire at various targets in southern Israel and Israeli incursions and airstrikes in Gaza. During this period a total of 23 Palestinians were killed, including seven civilians, of whom three were children; 93 other Palestinians, including 77 civilians, as well as 14 Israelis and foreign nationals in Israel, including eight civilians, were injured.¹ Limited property damage was also recorded, mostly in Gaza.

Israeli attacks and resultant casualties: 14-21 November 2012

During the eight days of hostilities, Israel targeted over 1,500 sites throughout the Gaza Strip, in air strikes and, to a lesser extent, artillery fired from tanks and naval forces;² unlike 'Cast Lead' operation, no ground incursion took place during the hostilities.

The main targets during the first two days of the offensive included sites used for the manufacturing and storage of weapons, rocket launching sites, training camps, and members of armed groups. From the third day (16 November) onwards, the scope of targeting expanded significantly to include governmental and police facilities, tunnels under the border with Egypt, and private residences. In a number of cases, Israeli official sources stated that residences targeted by the IAF belonged to members of Palestinian armed groups. From the third day (16 November) onwards, the scope of targeting expanded significantly to include governmental and police facilities, tunnels under the border with Egypt, and private residences. In a number of cases, Israeli official sources stated that residences targeted by the IAF belonged to members of Palestinian armed groups. Members of the Protection Cluster documented 52 Israeli air strikes on residential properties; in at least 35 of these attacks the IAF reportedly dropped a smaller munition a few minutes prior to the main air strike or made phone calls warning people to leave. In a number of cases, Palestinians were reportedly killed or injured whilst trying to flee their properties following apparent 'warnings'.

Overall, 165 Palestinians were killed in Israeli attacks, of whom 99 are believed to be civilians, including 33 children and 13 women.³ The Gaza Ministry of Health reports that 1,399 Palestinians were injured, the majority of whom are believed to be civilians. The increased targeting of sites located within populated areas as the days passed is reflected in the growing percentage of civilians among the overall death toll (see chart): by the second day of hostilities (15 Nov) civilians accounted for 40 per cent of reported fatalities but this rose to 60 per cent by 21 November.



* Cumulative fatalities as reported by 15:00 hrs of each day, except for 21 Nov which reflects the figure as of 21:00 hrs, when the ceasefire entered into force

CASE STUDY: CIVILIANS FLEEING AIRSTRIKES

Twenty-four year old Saadi Abu Zor lost his 19-year-old wife, Nesmah, four-year-old nephew and 20-year-old niece on 19 November 2012, when an airstrike struck near a home to which the family had fled to seek shelter. Saadi and his wife lived in the Az Zeitun neighbourhood of Gaza City, in an apartment on the third floor of a three-storey building, constructed a year ago to accommodate around 30 members of Saadi's extended family.

After midnight, while Saadi and his wife were sleeping, an explosion very close by shattered their bedroom window. The terrified couple fled the apartment carrying their two young children, a two-and-a-half year old boy and an eighteen month old girl. The family first took shelter at Saadi's parents' home, on the first floor of the building. Very quickly, however, the neighbours were shouting to warn each other to evacuate their homes. The neighbours indicated that the first explosion had been made by an Israeli drone to warn one of the families in the area to leave their home in advance of further air strikes. The extended Abu Zor family decided to evacuate their family building, and sought shelter at the nearby home of an uncle of Saadi's. Saadi explained what followed:

The whole family was in a panic. All houses in Az Zeitun are built very close to one another. We were not warned or prepared and the neighbourhood was dark because of the lack of electricity. Just as I was about to try to help her [his wife] leave the place, an air strike hit an adjacent house. My wife, niece and nephew died after a wall of the room they were in fell on them as a result of the air strike. My wife was holding our one and a half year-old daughter in her arms. Our baby girl somehow survived. Twenty-eight other members of my extended family were also injured and the building was seriously damaged. The residents of the adjacent home, which took the direct hit, had managed to leave safely before the strike. I am not affiliated with any faction. I never expected that I would go through such an experience. I can't believe my wife is dead and that I am a single father. They keep calling for their mother. I spend more time at work now. And I just try to forget what happened and somehow to accept our new circumstances.

"My wife, niece and nephew died after a wall of the room they were in fell on them"

The vulnerability of civilians in Gaza was exacerbated due to the almost total absence of basic protective measures, such as warning systems and bomb shelters - available to civilians in Israel.

Palestinian attacks and resultant casualties: 14-21 November 2012

During the eight days of hostilities, Palestinian armed factions fired 1,506 rockets towards Israel, according to the IDF spokesperson.⁴ The majority of rockets affected Israeli localities within a radius of 40 km from Gaza's borders (including Beer Sheva, Ashdod, Ashqelon and Kiryat Malachi), with a few reaching farther areas near Tel Aviv and Jerusalem.

Of the total number of rockets launched, according to the IDF, 58 per cent (875) landed in open areas; 28 per cent (421) of the rockets were intercepted by the 'Iron Dome' anti-missile defense system; ten per cent (152) fell within the Gaza Strip; and 58, or less than four per cent, struck residential built up areas. Information released by Hamas' military wing indicates that at least some of the rockets were targeted at Israeli military facilities.⁵

Overall, six Israelis were killed as a result of the rocket attacks, including three civilians, two soldiers and a civilian-military contractor, and 224 other were injured, the vast majority of whom are reportedly civilians. Additionally, information collected by human rights organizations suggests that up to six Palestinian civilians, including one woman and three children, may have been killed by Palestinian rockets falling short within Gaza.

The almost uninterrupted firing of projectiles into southern Israel severely disrupted the lives of about one million Israelis living within the 40 km, radius and placed many people at serious risk. The limited number of civilian fatalities in Israel is explained, primarily, by the protective measures implemented by the Israeli authorities in the affected areas, including the 'Iron Dome' system, the availability of bomb shelters in almost every residence, and an effective alarm system.

The almost uninterrupted Palestinian firing of projectiles into southern Israel severely disrupted and put under threat the lives of about one million Israelis living within the 40 km radius.

Displacement

During the period of hostilities, tens of thousands of Palestinians in Gaza are believed to have fled their homes in search of safety, mostly with relatives and friends. Displacement peaked on 20 November when the IAF dropped leaflets in several areas in the northern parts of the Gaza Strip, calling on all residents to leave their area immediately. By 20 November, approximately 12,000 people had sought shelter in 14 schools in northern and central Gaza.

While the majority of the displaced, including all those accommodated in schools, returned home immediately after the ceasefire, approximately 15,000 people were estimated to still be residing with host families during the following week. As of 5 December, the number of people still displaced was estimated at

approximately 3,000, primarily those whose homes had been destroyed or severely damaged.

Many Israelis in southern Israel also fled their homes during the period of hostilities to other parts of the country and are believed to have returned home upon the declaration of the ceasefire.

Damage to housing and infrastructure

Preliminary assessments indicate that some 450 houses (including structures with single and multiple housing units) in Gaza were totally destroyed or severely damaged as a result of the Israeli military offensive, displacing most of their residents; an estimated 8,000 houses sustained minor damage.

Despite the intensity of the Israeli bombardment, the scope and gravity of damage to public infrastructure supporting the provision of basic services across the Gaza Strip remained relatively limited:

- Health: one hospital (the Jordanian field hospital) was directly hit and severely damaged, and two other hospitals and 13 Primary Health Care centers, including nine belonging to the Ministry of Health and four to UNRWA, sustained light to moderate damage as a result of nearby explosions. Most of the damage has been repaired.
- WASH (Water, Sanitation and Hygiene): eight water networks, one water carrier, a water well and two water reservoirs (both out of service) have been damaged during airstrikes. The Coastal Municipalities Water Utility (CMWU) has been able to repair most of these facilities while the hostilities were ongoing.
- Education: an initial assessment indicated that at least 66 schools and other educational institutions sustained damage – mostly light – as a result of nearby explosions.

Additional public infrastructure damaged during Israeli attacks includes two bridges, a number of mosques, universities, media and research centers and sports facilities, and several government buildings.

Israeli media sources have reported that 80 housing units in southern Israel were destroyed or severely damaged by rockets, displacing their residents

INTERNATIONAL LAW AND ACCOUNTABILITY

The escalation in violence in Gaza and southern Israel triggered serious concerns with regard to the respect by all parties for international humanitarian and human rights law in their conduct of hostilities. The main concerns raised regarding the Israeli armed forces related to adherence to the principles of proportionality, precaution and effective warning in attacks, and distinction between military and civilian objects. Protection Cluster members are documenting incidents that resulted in civilian casualties and destruction of civilian property, as well as assisting victims to seek accountability and access to an effective remedy. With respect to Palestinian armed groups, there were concerns related to the targeting of Israeli civilians, the use of indiscriminate weapons, and the firing of rockets from densely populated areas; reports about summary executions of suspected collaborators in Gaza are also of serious concern.

As of 5 December, the number of people still displaced was estimated at approximately 3,000, involving primarily those who have lost their homes.

Humanitarian response

The escalation in hostilities exacerbated an already precarious humanitarian situation, illustrated by the fact that 80 per cent of Gazan families were already receiving some type of humanitarian aid. Over the eight days of hostilities and despite the security risks, UN agencies continued working to ensure, to the extent possible, that beneficiaries received their regular assistance and accessed essential services. For example, UNRWA and the World Food Programme (WFP) continued their regular food distribution cycles, which target a total of 1,085,000 beneficiaries; UNRWA health clinics remained operational, except for those damaged, and the World Health Organization (WHO) continued facilitating the delivery of essential drugs and disposables to public hospitals.

During the hostilities and in the immediate aftermath UN agencies, NGOs and international organizations also responded to the most urgent humanitarian needs resulting from the hostilities. This included:

- On 20 November, UNRWA began operating 12 of its schools as emergency shelters for those displaced, and distributed some 9,600 blankets and mattresses to the incoming families.
- WFP distributed food to approximately 10,000 people seeking refuge at schools, as well as to 800 families who lost their homes and were hosted by relatives and friends.
- Secours Islamique (France) distributed over 600 hygiene kits among those displaced in schools, while following the ceasefire ACF (Action Against Hunger) and UNICEF (UN Children's Fund) began distributing WASH kits to those who remained with host families.
- ICRC (International Committee of the Red Cross), UNRWA and NRC (Norwegian Refugee Council) distributed plastic sheets and tarpaulins to families living in homes that sustained minor damage.

Addressing the immediate shelter and other needs of those displaced emerged as one of the key priorities for humanitarian organizations

- UNDP (UN Development Programme) procured 100,000 liters of fuel for the Gaza Municipality, to allow for the collection of solid waste which had accumulated in the streets.
- Emergency psychosocial teams (ad hoc organizations) conducted visits among the worst affected families, and the Sawa Child Helpline increased its hours of operations from 16 to 24 hours a day.
- In the week following the ceasefire, UNMAS (UN Mine Action Service) carried out 54 emergency ERW risk assessments, including all damaged government and UNRWA schools, the two damaged bridges, farmland, and family centres.
- Awareness on ERW has been ongoing through the coordinated efforts of UNICEF, UNMAS, UNRWA and NGO partners.

Within 48 hours of the ceasefire, OCHA launched an Inter-cluster Initial Rapid Assessment (IRA), which was completed by 28 November. UNRWA also conducted an assessment to identify the priority needs of the refugee population. These complementary assessments were designed to gain an overall picture of the humanitarian situation resulting from the hostilities; to guide an immediate humanitarian response; and, where appropriate, to inform more in-depth assessments. A joint methodology and questionnaire was agreed upon beforehand to ensure a uniform approach.⁶

Addressing the immediate shelter and other needs of those displaced who require international assistance emerged as one of the key priorities in the coming weeks. Additional priority activities include ongoing provision of psychosocial support for children; ongoing clearance of and raising awareness of the risks of ERW; addressing critical shortages in essential drugs and medical disposables (many of which pre-dated the current escalation but were exacerbated during this period); and rehabilitation of damaged residences, schools, and productive assets.

The specific timing of the events posed a challenge in terms of financing the humanitarian response; the 2012 CAP is about to expire and the 2013 CAP is

already finalized. Based on the findings of the assessments and taking into account existing stocks under the inter-agency contingency plan for Gaza, OCHA coordinated a rapid review of the 2012 and 2013 CAPs:

1. A rapid review of the 2012 CAP identified specific projects that are relevant to the identified needs and response and are currently unfunded or only partially funded. Together with one additional project in the area of health, the total funding requirements amount to \$12-13 million.
2. A review of the 2013 CAP identified relevant Gaza projects that will need a cost revision due to the projected increase in caseload or other parameters. The revised cost of these projects is estimated to be between \$60-70 million. Early funding for proposed 2013 project will be crucial to allow partners to step-up the immediate response.

In addition to requested requirements under the CAP 2012, UNRWA requires \$17.7 million to respond to the most urgent needs of refugees in Gaza affected by the recent escalation in violence. This figure will cover the most urgent needs in food, refugee shelter repairs, NFIs, health and repairs to UNRWA installations.

CEASEFIRE UNDERSTANDINGS RESULT IN IMPROVED ACCESS TO FISHING AND FARMING AREAS

No change regarding restrictions on the movement of people and goods

As part of the 21 November ceasefire between Hamas (along with other armed groups) and Israel, access to the sea and to the restricted areas near the fence separating Gaza and Israel has been eased. However, no changes have been observed so far regarding the ongoing restrictions on the movement of people and goods to and from Gaza through the Israeli-controlled Erez and Kerem Shalom crossings.

The text of the 'Cease-Fire Understandings' released by Egypt calls for, "opening the crossings and facilitating the movements of people and transfer of goods, and refraining from restricting residents' free movements and targeting residents in border areas," stating that, "procedures of implementation" would be negotiated 24 hours after the start of the ceasefire.

Shortly after the announcement of the cease-fire, Gaza fishermen began sailing up to six nautical miles (NM) from shore and the Israeli Navy subsequently moved the sea buoys marking the open areas to the new six NM limit.⁷ According to the Oslo Accords, Palestinian fisherman should have access up to 20 NM off the Gazan coast. This area had been progressively reduced; a limit of 3 NM had been enforced since December 2008, devastating the livelihoods of Gazan fishermen. While the recent expansion of the accessible area in the sea is a positive step, according to FAO, the significant recovery of the fishing sector would require access to areas up to at least 12NM. This would increase the fishing catch by an estimated 65 per cent and allow fishermen to exploit high value bottom fish. The fishing industry is currently the main source of livelihood for over 3,000 Gazan families.

While the recent expansion of the accessible area in the sea is positive step, a significant recovery of the fishing sector would require access to areas within at least 12NM

There has also been an easing of restrictions on Palestinians' access to land adjacent to the fence between Gaza and Israel. The Israeli military has verbally indicated to OCHA that Palestinian access to areas within 300 meters from the fence remains restricted, except for farmers, who are allowed to access up to 100 meters from the fence.⁸ However, it remains unclear how the Israeli military intends to enforce the new regime, particularly regarding the distinction between farmers and other Palestinian civilians. Prior to this, farmland located within 500 meters from the perimeter fence was totally inaccessible, and access to areas up to 1,500 meters from the fence remained risky due to frequent 'warning shots' fired by the Israeli army. Approximately 19,800 dunums, or one-third of Gaza's agricultural land is located in the previously access restricted areas, with farmers losing an estimated 75,000 metric tonnes of produce each year as result of limited access. If the current restrictions on the transfer of commercial goods to the West Bank and Israel are also lifted, the potential impact of the recent easing on the access to land could be significant in increasing livelihood opportunities for Palestinian farmers.

By contrast, there has been no easing of pre-existing constraints on the movement of people and goods. While the volume of imports at the single crossing for commodities (Kerem Shalom) has returned to levels recorded prior to the escalation, this represents only a small portion of the imports recorded prior to the blockade. The import of basic construction materials remains restricted to international organizations implementing projects that have been approved by the PA and Israel. However, the approval process is costly, complex and lengthy and thus impedes the ability of international organizations to address urgent needs. Similarly, while four truckloads of agricultural produce were permitted to exit Gaza for export abroad in November, there has been no easing of the long-standing ban on the transfer of commercial goods from Gaza to the West Bank and Israel.

The movement of people to and from Gaza via the Erez and Rafah crossings is subject to the same restrictions as those prior to the escalation in hostilities. Access through the Erez crossing remains restricted to a limited number of humanitarian cases and businessmen with pre-approved permits. In 2012, an average of less than 200 permitted Palestinians and internationals passed through the Erez crossing each day, compared to an average of 26,000 per day in 2000, before the beginning of the second Intifada. Male travelers between the ages of 14 and 40 also face difficulties in travelling through the Rafah crossing due to Egyptian security clearance procedures; in November, over 1,000 travelers were denied entry to Egypt on security grounds.

Given the ongoing restrictions on the movement of goods into Gaza via the single land crossing (Kerem Shalom), the tunnels underneath the border between Egypt and Gaza remain a critical lifeline for the Gazan population, particularly for restricted construction materials and fuel. Dozens of tunnels sustained significant damage in Israeli airstrikes during the escalation in hostilities. However, following repairs performed since the ceasefire, activities have resumed, reportedly reaching 80 per cent of the level observed prior to the escalation.

The ceasefire understandings provide an opportunity for moving towards a full lifting of the blockade on Gaza, in line with the requirements under international law

While the easing of access to fishing and farming areas has been a positive step, the ceasefire understandings provide an opportunity for progress towards a full lifting of the blockade on Gaza, in line with international humanitarian law. While Israel has legitimate security concerns, it also has an obligation to ensure that the people of Gaza can maintain a normal life, access health, education and livelihood opportunities, and are able to travel to engage in cultural, educational, commercial and social life.

GAZA EVENTS TRIGGER WIDESPREAD PROTESTS AND CLASHES ACROSS THE WEST BANK

Following an upward trend, the number of injuries reaches an historical record

The Israeli military offensive in the Gaza strip, launched on 14 November, triggered dozens of protests across the West Bank, mostly in the vicinity of Israeli military posts and checkpoints. The majority of these protests evolved into violent clashes, during which demonstrators threw stones at Israeli forces and the latter responded by firing tear gas canisters, rubber-coated metal bullets and, in some cases, live ammunition. As a result, two Palestinians were killed and almost 700 other demonstrators, alongside four members of Israeli forces, were injured.

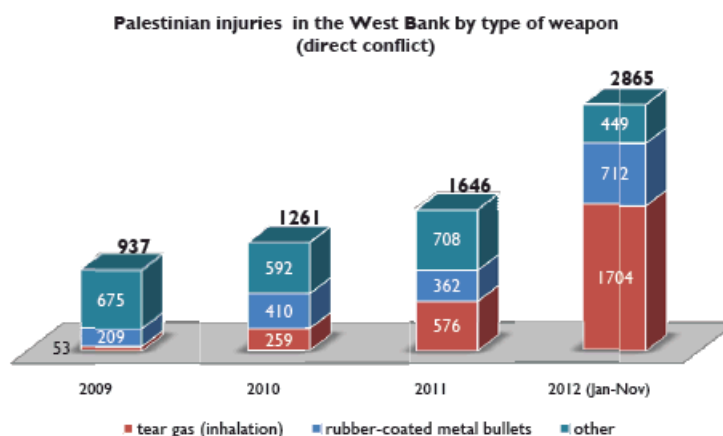
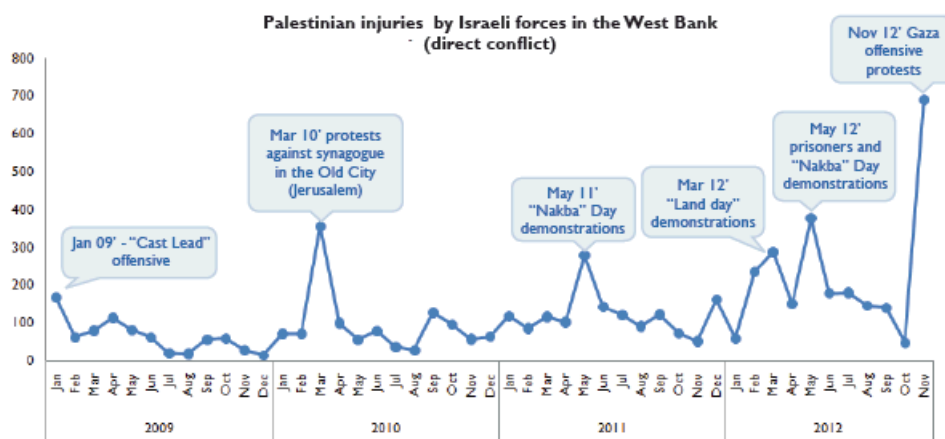
One of the fatalities occurred on 17 November in An Nabi Saleh village (Ramallah), when an Israeli soldier fired live ammunition at a 29 year old demonstrator. The demonstrator was injured, and died of his wounds two days later. Eyewitnesses reported that the man was shot from a distance of approximately 10 meters. Demonstrations in this village take place on a weekly basis to protest against the expansion of the nearby Halamish settlement onto the village's land. The second fatality was a 22 year-old man who, on 19 November, was shot with live ammunition by Israeli soldiers during clashes in Hebron City, according to Israeli sources the man attempted to stab a soldier. Both incidents triggered the opening of criminal investigations by the Israeli Military Police, which are ongoing. Following a policy change introduced in 2011, such investigations are automatically opened into cases resulting in the killing of Palestinian civilians in the West Bank.

The demonstrations and ensuing clashes in the context of the protests against the Gaza offensive resulted in the injury of 690 Palestinians. About half of the injuries occurred in a series of protests held at two sites: next to Rachel's Tomb in Bethlehem (185 injuries), and in Hebron City (147 injuries). Other locations recording large numbers of injuries include Huwwara checkpoint south of Nablus city, Beituniya checkpoint west of Ramallah city, the eastern entrance to Qalqiliya city, Qalandiya checkpoint north of Jerusalem, and various sites inside the Old City of East Jerusalem. Approximately half of those injured were treated for tear gas inhalation; about a third were wounded by rubber-coated metal bullets, and the remainder were injured after being physically assaulted, or hit by live ammunition or tear gas canisters.

Gaza-related clashes bring the total number of Palestinian injuries recorded in November 2012 in the West Bank to 733, and to 2,865 since the beginning of 2012. November marked the highest number of injuries recorded in a single month since OCHA began recording conflict-related casualties in a database, in January 2005. Similarly this month's occurrences, most peaks in Palestinian injuries were recorded in months that witnessed one/a few days of intense clashes (see chart below).

November recorded the highest number of injuries in a single month (733) since OCHA began recording conflict-related casualties in a database in January 2005.

A multiyear perspective suggests that November's peak follows a consistently increasing trend in Palestinian injuries by Israeli forces, with the total number recorded in the first 11 months of 2012 representing over a three-fold increase, compared to the equivalent figure for the whole of 2009 (see chart below).



Another feature of this month's clashes is the large number of people treated due to tear gas inhalation. This, too, seems to reflect Israeli forces' increasing use of tear gas, as the main crowd-control method during demonstrations, at the expense of rubber-coated metal bullets, live ammunition, physical assault and other means. While in 2009 only six per cent of all recorded injuries were caused by tear gas inhalation, this percentage increased to 21 in 2010, to 35 in 2011, and to 56 per cent in 2012.

DEMOLITIONS AND DISPLACEMENT IN AREA C AND EAST JERUSALEM RESUME

Communities in 'firing zone' amongst the worst affected

Following an almost complete halt in September, in mid-October the Israeli authorities resumed the demolition of Palestinian-owned structures on the grounds of lack of building permits.

The authority for planning and zoning in Area C lies with the Israeli Civil Administration (ICA), which is responsible for the issuance of building permits and for the demolitions of structures built without such permits. The existence of a valid master plan (officially referred to as a 'Special Partial Outline Plan') is considered by the ICA as a pre-condition for the issuance of building permits. However, of the 270 communities located entirely or mostly in Area C, only 46 (17 per cent) have a valid master plan. The population of these communities is estimated at 37,000, or 57 per cent of the total population of the 270 communities. Typically, the existing

master plans only cover the current built up area of the communities, leaving little space for development. 10 In total, the combined area of all these valid master plans is less than 20,000 dunums, or less than one per cent of Area C.

Between mid-October and the end of November, a total of 117 residential and livelihood-related structures were demolished due to lack of building permits, including 109 in Area C and 8 in East Jerusalem. Over a third of the structures demolished (42) were residential, displacing 175 people, more than half of whom were children. The remainder of the structures were livelihoods-related, including water cisterns, animal shelters and agricultural rooms, and impacted up to 450 people.

Communities located in areas designated by the Israeli authorities as "firing zones" for military training, which cover about 18 per cent of the West Bank, are amongst the most vulnerable in Area C.

SILENT DISPLACEMENT: THE AL KHALAYLA BEDOUIN COMMUNITY

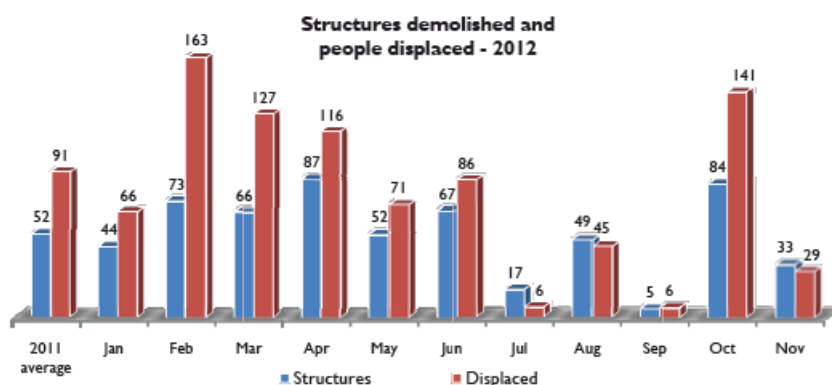
In November 2012, six Palestinian families from the Al Khalayla Bedouin community were finally forced to leave their homes after a series of demolitions and other pressures to leave their area. These families have been living for more than 35 years in what is now a Barrier enclave northwest of Jerusalem (Al Khalayla, next to the Giv'at Ze'ev settlement bloc).¹¹ Their displacement this month occurred after multiple demolition waves, as well as repeated demands by the ICA for the community to relocate.

The Al Khalayla community belongs to the Jahhalin tribe and comprises seven households, totaling 23 adults and 35 children, all of whom are registered refugees from the Naqab, now in southern Israel. The families rely on raising livestock and employment in nearby Israeli settlements as their primary income source. The Al Khalayla site belongs to a family from the nearby Al Jib village, with whom the community has an agreement. During the winter season, the community has traditionally relocated to a site in the Al Khan Al Ahmar - Mhtawish area, next to the Jerusalem- Jericho road.

In October 2011, Israeli forces demolished the community's winter dwellings on the grounds of lack of building permits. An international NGO subsequently delivered emergency shelter for the community in the same location, but this too was demolished. Accordingly, since December 2011, the community has been compelled to make Al Khalayla its sole place of residence. However, the ICA also issued demolition and eviction orders against these dwellings, and in April 2012 all but one structure were demolished. Emergency shelter kits, provided to the displaced families by the International Committee of the Red Cross immediately after these demolitions, were dismantled and confiscated by the ICA the following day.

The beleaguered community then rebuilt several modest structures in the area as temporary shelters, however, the ICA made subsequent verbal demands for the community to leave. In mid-October 2012, the ICA showed community representatives a proposed site for relocation in the nearby village of Bir Nabala, immediately adjacent to the Barrier. The community rejected the proposal because they felt the site was unsuitable, since it lacks grazing space and because other Bedouin communities already reside in the surrounding areas. Later the community also learned that the site proposed by the ICA is privately owned by other Palestinians.

In early November 2012, after all legal avenues were exhausted and given the lack of any viable alternative, three of the six families relocated to the Aqbat Jaber refugee camp next to Jericho city. Several days later, another three families relocated to the Al Jiftlik area in the Jordan Valley. Only one family has remained at the Al Khalayla site due to its dependence on employment in a nearby Israeli settlement.



These demolitions bring the total number of structures demolished and people displaced in these circumstances since the beginning of 2012 to 577 and 853 respectively, a slight decrease compared to the equivalent period in 2011 (605 and 994).

Communities located in areas designated by the Israeli authorities as "firing zones" for military training, which cover about 18 per cent of the West Bank, are amongst the most vulnerable in Area C. There are approximately 5,000 Palestinians residing in 38 communities located in firing zones. One such community, Ibbiq in the northern Jordan Valley, was among the most affected by demolitions during the reporting period, with 52 structures demolished and 127 people displaced as a result. Moreover, this and other communities in the same area (including Khirbet Tana, Hamamat el Maleh, Khirbet Ar Ras al Ahmar and Humsa), were further affected during November due to a military training exercise carried out by the Israeli army. Following the issuance of evacuation orders, about 100 families were displaced from their homes for one day, for the duration of the exercise.

The lack of adequate planning and zoning by the ICA, compounded by the designation of large areas as 'firing zones', are among the main drivers of vulnerability and humanitarian need among many Palestinian communities in Area C.

EAST JERUSALEM HOSPITALS FACE A SEVERE FINANCIAL CRISIS IMPACTING SERVICE DELIVERY

The unpaid debt by the Palestinian Authority is the primary trigger

Unprecedented financial crisis is undermining the delivery of health services by the six East Jerusalem Hospitals (EJHs), which are major providers of referral health care for Palestinians in the oPt

The World Health Organization reports that an unprecedented financial crisis is undermining the delivery of health services by the six East Jerusalem Hospitals (EJHs), which are major providers of referral health care for Palestinians in the oPt. The crisis is a result of the Palestinian Authority's (PA) failure to pay for patient care; the PA owes over NIS 85 million as of the end of November 2012. The Palestinian Ministry of Health (MOH) refers to these hospitals more than 20,000 patients from the West Bank and Gaza, who need specialized services and procedures unavailable elsewhere in the oPt.

The financial crisis has affected all six EJH - Princess Basma Rehabilitation Center, Augusta Victoria Hospital, Maqassed Hospital, St. John Eye Hospital, St. Joseph Hospital, and the Palestinian Red Crescent Society Hospital. However, more than half of the PA's debt is owed to a single hospital, Augusta Victoria. This hospital specializes in oncology and kidney dialysis: 70 per cent of all oncology cases from Gaza and 40 per cent from the West Bank, primarily breast, colon and blood cancers, are referred to Augusta Victoria for chemotherapy and radiotherapy.

Augusta Victoria's Director, Dr. Tawfiq Nasser, reported that most chemotherapy and pre-chemotherapy drugs are at zero stock and suppliers are not resupplying due to unpaid bills. The drug shortages due to lack of funds mostly affect breast cancer patients, who represent 60 per cent of oncology cases at the hospital. If

one drug is lacking from the chemotherapy treatment regimen, their response rate will drop precipitously and negatively impact the outcome of treatment. The hospital is trying to cope by limiting drug procurement to the highest priority items, but cancer treatment is costly; for example, patients on Herceptin need weekly doses for one year, at a cost of NIS 9000 per dose.

According to Dr. Nasser, "If the crisis continues we will not be able to accept any new patients, or pay our employees' salaries." The PA had previously agreed to make monthly payments but has been unable to do so; the last payment received was a transfer, in early September, of NIS 7 million, about 10 per cent of what is owed to Augusta Victoria. The PA, in turn, is looking for donor funding to be re-established at levels that will allow it to fund these basic services.

In order to maintain their operations, all hospitals are reviewing running costs, including staff levels, to find reductions. Some hospitals have already taken extraordinary measures such as releasing staff, reducing the number of admissions and curtailing services. Some patients who have turned up for appointed surgeries or treatment have had appointments rescheduled because of the lack of drugs needed for their treatment.

The EJH have played a critical role in providing health services to the Palestinian people for decades, especially for the poor. In addition to patients referred by the MOH, 20 per cent of the patients who access care at the EJHs are social cases without insurance or sufficient resources.

END NOTES

1. For a more detailed account of the various escalations see the relevant issues of OCHA, Weekly Protection of Civilians.
2. IDF Spokesperson Announcement, 21 November 2012, 21:00 hrs.
3. Information is collected by OHCHR, PCHR, Al Mezan and B'Tselem, with reference to Ministry of Health (Gaza) data.
4. IDF Spokesperson Announcement, 21 November 2012, 21:00 hrs.
5. <http://www.qassam.ps/statement-1454-EQB-target-the-Israeli-military-bases-across-Occupation-Palestinian-Land.html>
6. The IRA involved up to 40 humanitarian workers from UN agencies and NGOs representing all the humanitarian clusters and sectors active in the oPt. The teams visited the 21 most affected municipalities in Gaza, where, together with the local authorities, they identified the most urgent needs.
7. In a number of incidents, however, the Israeli Navy fired warning shot towards fishing boats that reached or exceeded the new limit, detaining some 30 fishermen and requisitioning a number of boats.
8. Since 21 November, there have been a number of incidents in which Palestinian demonstrators have attempted to reach the fence and Israeli forces have opened fire towards them, killing two civilians and injuring at least 53. In some of the incidents, Hamas police forces have reportedly tried to prevent demonstrators from reaching the fence.
9. An OCHA/UNRWA survey from 2009-10 identified a total of 270 communities with more than half of their built up area in Area C, with a population of approximately 62,000. The entire Palestinian population in Area C, including those living in localities with a small part of their area in Area C, is estimated at 150,000.
10. While formally residents can obtain building permits within the boundaries of a master plan, in practice most residents built there without ICA permits, without receiving demolition orders.
11. Al Khalayla is a large community comprising some 700 people, including the affected Bedouin families.

CONTRIBUTING AGENCIES

United Nations Children's Fund (UNICEF), United Nations Development Programme (UNDP), United Nations Development Fund for Women (UNIFEM), United Nations Educational Scientific and Cultural Organization (UNESCO), United Nations Food and Agricultural Organization (FAO), United Nations Office for the Coordination of Humanitarian Affairs (OCHA), United Nations Office for the High Commissioner of Human Rights (OHCHR), United Nations

Population Fund (UNFPA), United Nations Relief and Works Agency for Palestine Refugees in the Near East (UNRWA), United Nations Special Coordinator for the Middle East Peace Process (UNSCO), World Food Programme (WFP), World Health Organization (WHO), Al Haq, Badil, Save the Children (UK), Defence for Children International – Palestine Section (DCI-PS), Oxfam GB, Palestine Hydrology Group (PHG), Campaign for the Right to Enter, Action Against Hunger (ACF).

MORE INFORMATION: Omar Abulhaj, abulhaj@un.org, +972 (0)2 5829962

Annex: Monthly Indicator Tables

Conflict-related casualties and violence¹

Direct Israeli-Palestinian conflict related casualties

	2010	2011	2012										
	Total	Total	Jan	Feb	Mar	Apr	May	June	July	Aug	Sep	Oct	Nov
Palestinian deaths													
Gaza	72	108	3	1	25	0	0	17	1	1	9	14	174
West Bank	15	13	0	1	1	1	0	0	1	0	0	0	3
Total	87	121	3	2	26	1	0	17	2	1	9	14	177
Of whom are civilians ²	35	59	1	2	6	1	0	6	1	0	1	0	106
Of whom are female	1	3	0	0	1	0	0	0	0	0	0	0	13

Palestinian injuries

Gaza	286	467	2	23	116	5	19	83	5	5	9	32	1553*
West Bank	1261	1643	58	234	288	164	684	148	197	164	153	47	733
Total	1547	2110	60	256	404	169	703	231	202	169	162	79	2286
Of whom are civilians	1510	2059	59	267	391	167	703	209	200	166	6	64	na
Of whom are female	126	148	0	15	12	4	15	7	5	12	40	8	na

Israeli deaths

Israel, Gaza and West Bank	9	12	0	0	0	0	0	1	0	0	0	0	6
Of whom are civilians	4	12	0	0	0	0	0	0	0	0	0	0	3
Of whom are female	2	0	0	0	0	0	0	0	0	0	0	0	1

Israeli injuries

Israel, Gaza and West Bank	195	124	3	14	16	9	15	4	12	5	7	1	253**
Of whom are civilians	45	58	2	3	13	9	4	1	7	4	7	6	na
Of whom are female	15	3	0	0	3	1	0	0	1	0	1	0	265*

* Figures include those provided by the Ministry of Health in Gaza during the recent Israeli offensive on Gaza (14-21 November)

** Figures by the Israeli Ministry of Foreign Affairs

Tunnel-related casualties³

	2010	2011	2012										
	Total	Total	Jan	Feb	Mar	Apr	May	June	July	Aug	Sep	Oct	Nov
Deaths	46	36	2	0	1	1	3	0	0	0	4	0	0
Injuries	89	54	2	1	4	3	4	0	0	0	4	0	0

Israeli-settler related incidents resulting in casualties or property damage

	2010	2011	2012										
	Total	Total	Jan	Feb	Mar	Apr	May	June	July	Aug	Sep	Oct	Nov
Incidents leading to Palestinian casualties ⁴	79	120	8	10	10	12	11	3	11	4	6	12	19
Incidents leading to Palestinian property/land damages	219	291	12	15	22	12	28	21	28	21	13	28	8
Incidents leading to Israeli Casualties	32	23	1	2	2	6	1	1	4	2	3	3	5
Incidents leading to Israeli Property/land damages ⁵	83	13	2	3	2	0	1	1	2	1	2	0	1

Civilian Palestinians killed or injured by unexploded ordnance in Gaza

		2010	2011	2012										
		Total	Total	Jan	Feb	Mar	Apr	May	June	July	Aug	Sep	Oct	Nov
Adult	Injured	6	7	3	0	3	4	0	0	0	0	0	1	0
	Killed	0	1	0	0	0	0	0	0	0	0	1	0	1
Child	Injured	8	17	2	0	6	3	0	0	5	1	0	2	0
	Killed	2	2	0	0	1	0	0	0	0	0	0	0	0
Grand Total		16	27	5	0	10	7	0	0	5	1	1	3	1

Source: United Nations Mine Action Service (UNMAS)

Search and Arrest

	2010	2011	2012										
	Monthly Average	Monthly Average	Jan	Feb	Mar	Apr	May	June	July	Aug	Sep	Oct	Nov
Search Campaigns (West Bank)	397	349	349	417	334	399	286	439	415	184	254	319	291
Palestinians detained (West Bank)	275	262	272	309	244	338	231	173	299	145	206	318	468

Source: OCHA

Palestinians under Israeli custody (occupation related)⁶

	2010	2011	2012										
	Total	Total	Jan	Feb	Mar	Apr	May	June	July	Aug	Sep	Oct	Nov
Total as of the end of the month	6219	5326	4803	na	4386	4424	4437	4484	4423	4387	4366	4298	4432
of whom are women	31	26	3	na	5	5	4	4	7	6	7	11	10
of whom are administrative detainees ⁷	218	240	309	na	320	320	302	285	250	212	184	156	178
of whom are detained until the conclusion of legal proceedings	940	633	676	na	795	853	896	909	919	943	925	925	990

Source: Israeli Prison Service (through B'Tselem)

Demolition of Structures

Structures demolished⁸

	2010	2011	2012										
	Total	Total	Jan	Feb	Mar	Apr	May	June	July	Aug	Sep	Oct	Nov
of which in Area C	357	560	39	64	58	87	41	62	9	49	2	82	28
of which in East Jerusalem	82	42	5	16	1	0	10	5	9	0	3	2	7
Grand Total	439	622	44	80	59	87	51	67	18	49	5	84	35

*20 are in Area B

People Displaced due to demolitions or evictions⁹

	2010	2011	2012										
	Total	Total	Jan	Feb	Mar	Apr	May	June	July	Aug	Sep	Oct	Nov
of whom were displaced in Area C	478	1006	60	161	136	107	65	86	6	45	0	135	0
of whom were displaced in East Jerusalem	128	88	6	2	0	0	3	0	0	0	0	6	29
Grand Total	606	1094	66	163	136	107	68	86	6	45	0	141	29

Source: Displacement Working Group

Child Protection

Number of Palestinian children killed - direct conflict

	2010	2011	2012										
	Total	Total	Jan	Feb	Mar	Apr	May	June	July	Aug	Sep	Oct	Nov
West Bank	4	2	0	0	1	0	0	0	0	0	0	0	0
Gaza Strip	5	11	1	0	1	0	0	4	0	0	0	0	36

Number of Palestinian children injured - direct conflict

West Bank	282	308	4	16	12	27	52	1	8	18	32	7	224
Gaza Strip	50	125	0	5	39	0	0	20	0	0	3	10	545

Number of Israeli children killed - direct conflict

oPt	0	1	0	0	0	1	0	0	0	0	0	0	0
Israel	0	1	0	0	0	0	0	0	0	0	0	0	0

Number of Israeli children injured - direct conflict

oPt	2	0	0	0	0	1	0	0	2	0	0	0	0
Israel	0	0	0	0	0	0	0	0	0	0	0	0	2

Number of Palestinian children held in detention by Israeli authorities²²¹

In Israel and oPt	289 (mon ave)	1,781	170	187	206	220	234	221	211	195	198	164	na
-------------------	---------------------	-------	-----	-----	-----	-----	-----	-----	-----	-----	-----	-----	----

Number of Palestinian children displaced by demolitions

West Bank	297	618	36	89	42	55	19	40	0	23	0	89	0
-----------	-----	-----	----	----	----	----	----	----	---	----	---	----	---

Number of incidents resulting in the disruption of schools¹⁹

oPt	24	47	1	3	6	1	11	3	2	2	na	na	na
-----	----	----	---	---	---	---	----	---	---	---	----	----	----

Source: OCHA, DWG, Defence for Children International, Israel Palestine Working Group on grave violations affecting children in armed conflict

Access

Access to healthcare - Gaza

	2010	2011	2012										
	2010 Monthly Average	2011 Monthly Average	Jan	Feb	Mar	Apr	May	June	July	Aug	Sep	Oct	Nov
Applications for permits to leave Gaza through Erez Crossing ¹⁵	970	872	902	766	768	764	883	784	764	585	705	789	NA
of which approved	757	721	847	701	725	724	849	733	705	543	647	705	NA
of which denied	54	19	6	10	9	8	5	3	5	7	16	6	NA
of which delayed ¹⁶	158	83	49	55	34	32	29	48	16	35	42	78	NA

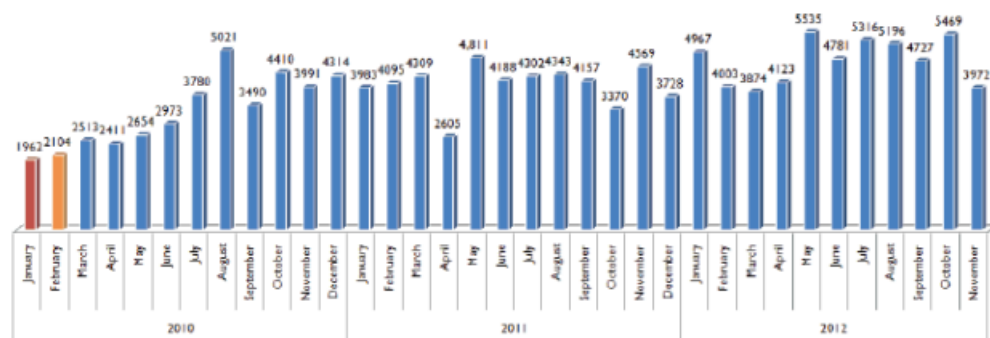
Source: WHO

Movement of humanitarian staff, West Bank

	2010	2011	2012										
	2010 Monthly Average	2011 Monthly Average	Jan	Feb	Mar	Apr	May	June	July	Aug	Sep	Oct	Nov
Incidents of delayed or denied access at WB checkpoint ¹⁷	44	38	34	27	28	28	34	51	46	31	49	60	40
Of which occurred at Jerusalem checkpoint	32	22	7	7	11	10	19	42	37	17	33	28	26
Number of staff days lost due to checkpoint incidents	29	25	10	16	11	6.5	14	50	31	20	36.5	36	16

Source: OCHA










Truckloads of goods entering Gaza from Israel



Source: Palestinian Ministry of National Economy, Gaza

Consolidated Appeals Process (CAP): CAP 2011 and 2012

funding status as of 19 October 2012

Cluster	CAP 2011		CAP 2012	
	Total request in million \$	% of funds received	Total request in million \$	% of funds received
 Agriculture	36	37%	24,921,339	44%
 Cash for Work and Cash Assistance	144	40%	95,559,928	35%
 Coordination and Support Services	21	103%	21,167,518	96%
 Education	16	30%	16,662,763	55%
 Food Security	204	64%	170,513,876	82%
 Health and Nutrition	21	77%	20,742,170	87%
 Protection	40	70%	46,131,077	73%
 Shelter and Non-food items	22	41%	na	na
 Water, Sanitation and Hygiene	34	39%	24,208,531	54%
Total	537	55%	419,907,202	68%

Source: Financial Tracking System (FTS)

There is a further \$738,215 of funding available which is yet to be allocated to a specific cluster.

Monthly Indicator Notes and Clarifications

Casualties

1. **Conflict-related casualties:** includes all casualties that occurred in violent incidents immediately related to the Israeli occupation and the Israeli-Palestinian conflict, such as military operations, search and arrest campaigns, clashes during demonstrations, attacks involving Israeli settlers, etc. These figures exclude other related casualties such as those in the context of access delays, the explosion of unexploded ordnance, reckless handling of weapons, collapse of tunnels, and internal Palestinian violence.
2. **Civilians:** includes people who, according to the information available at the time of publication, did not fulfill a "continuous combatant function" as part of an organized armed group, regardless of the circumstances of their injury or killing. Figures in this category should not be considered comprehensive, as unconfirmed or disputed cases are excluded.
3. **Tunnel related casualties:** figures in this category may overlap with those under conflict-related casualties, as it includes casualties in the context of Israeli attacks targeting tunnels, as well as those resulting from tunnel collapses and other accidents.

Israeli settler-related violence

4. **Incidents resulting in casualties:** includes all violent incidents involving Israeli settlers and Palestinians, including those in which the injury was caused by a member of the Israeli security forces during an intervention in such an incident.
5. **Incidents resulting in property damage/losses:** *ibid.*

Search and Arrest

6. **Palestinians in Israeli custody:** includes all Palestinians from the oPt held by the Israeli authorities at the end of each month, whether in Israel or in the West Bank, in connection to an offense related to the Israeli occupation and classified by the Israeli authorities as a "security detainee/prisoner". Therefore it excludes Palestinians held in connection to a "regular" criminal offense.
7. **Administrative detainees:** Palestinians held by the Israeli authorities without charge or trial, allegedly for preventive purposes.

Demolitions

8. **Structures demolished:** includes all Palestinian-owned structures in the oPt demolished by the Israeli authorities, regardless of their specific use (residential or non-residential) or the grounds on which the demolition was carried out (lack of building permit, military operation or punishment).
9. **People displaced due to demolitions:** includes all persons that were living in structures demolished by the Israeli authorities, regardless of the place in which they relocated following the demolition.
10. **People affected by demolitions:** includes all people that benefited from a demolished structure (as a source of income, to receive a service, etc), excluding those displaced.

Access West Bank

11. **Permanently staffed checkpoints:** staffed by Israeli security personnel, excluding checkpoints located on the Green Line and 'agricultural gates' along the Barrier.
12. **Partially staffed checkpoints:** checkpoint infrastructure staffed on an ad-hoc basis.
13. **Unstaffed obstacles:** includes roadblocks, earthmounds, earth walls, road gates, road barriers, and trenches. For historical reasons, this figure excludes obstacles located within the Israeli-controlled area of Hebron City (H2).
14. **'Flying' or random checkpoints:** checkpoints deployed on an ad hoc basis in places without pre-existing infrastructure.

Access to health

15. **Applications for permits to leave Gaza through Erez:** includes only the applications submitted for travel scheduled within the reporting period.
16. **Delayed applications:** includes applications regarding which no answer was received by the date of the medical appointment, thus forcing the patient to restart the application process.

Movement of humanitarian staff

17. **Incidents of delayed or denied access at a WB checkpoint:** includes incidents affecting local or international staff of humanitarian organizations, both UN and international NGOs.

Imports to Gaza

18. **Truckloads by type:** for historical reasons this figure excludes truckloads carrying all types of fuel.

Child Protection

19. **Attacks include the targeting of schools that cause the total or partial destruction of such facilities.** Other interferences to the normal operation of the facility may also be reported, such as the occupation, shelling, targeting for propaganda of, or otherwise causing harm to school facilities or its personnel.