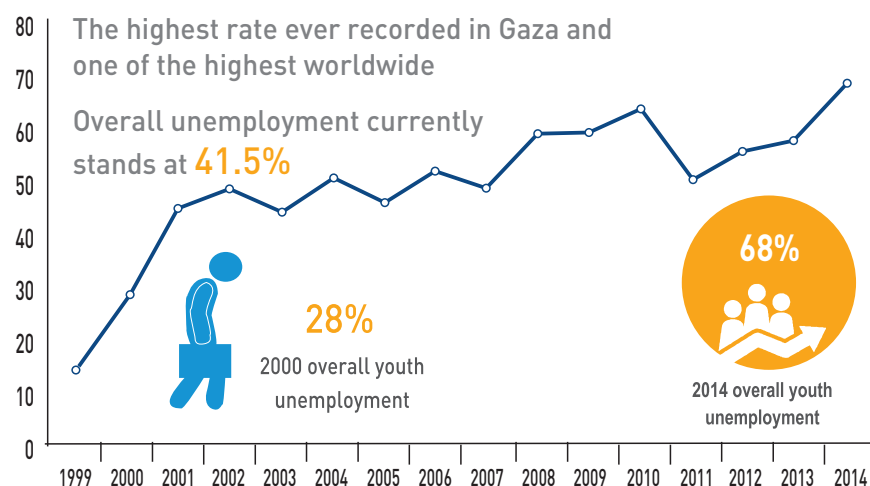
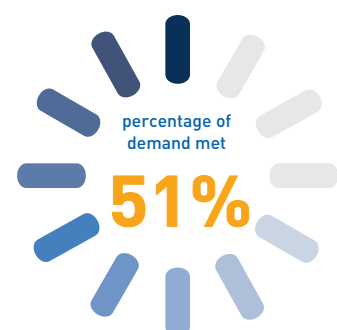


gaza: eight years of blockade

Youth Unemployment



Gaza Strip: Power Deficit as of June 2015



demand **470 MW**
available **208 MW**



12-16 HOURS
of scheduled power cuts per day

Infant Mortality

increased for the first time in decades

1960: **127 / 1,000** live births

2008: **20.2 / 1,000** live births

2013: **22.4 / 1,000** live births

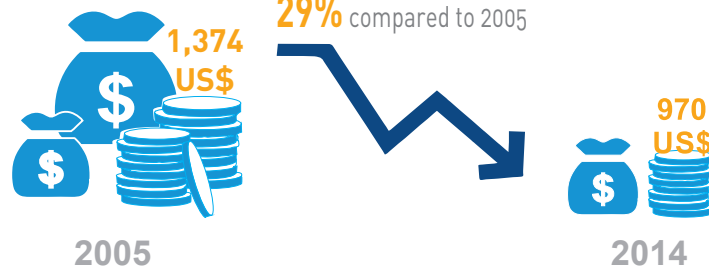


Loss of Livelihoods

Up to **35%** of Gaza's agricultural land and **85%** of its fishing waters are affected by Israeli restrictions at various points

GDP Contraction in 2014

In 2014 real GDP per capita contracted by **29%** compared to 2005



Data Sources: UNRWA, OCHA - Opt, United Nations Country Team oPt, PCBS / September 2015

“ UNRWA was never meant to exist for this long. It exists because of political failure. In the absence of a just and lasting solution to the plight of Palestinian refugees, UNRWA has become more than an Agency. It is a lifeline.”

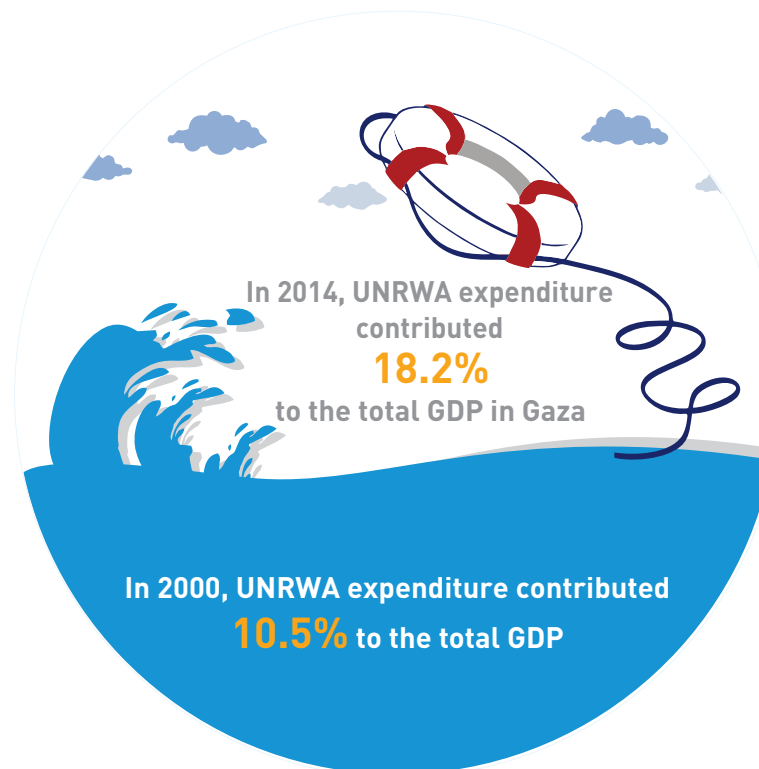
United Nations Secretary-General Ban Ki-Moon, June 2015



257 UNRWA schools
250,800 students
8,086 teachers



21 UNRWA health centres
166 doctors
328 nurses

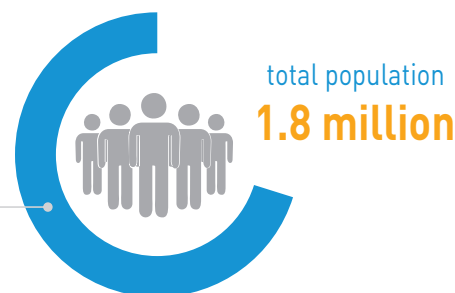


The Gaza aquifer may become unusable by **2016** and damage to it irreversible by 2020



71%

1.3 million
refugees



876,497
refugees receiving UNRWA food assistance
In 2000 fewer than 80,000 refugees relied on food assistance



Poverty Related Interventions (including food assistance and cash for work)



2005
9,319
truck loads



Exit of Goods from Gaza

2014
228
truck loads



10 Years