

# GAZA STRIP

ACCESS AND MOVEMENT - AUGUST 2016



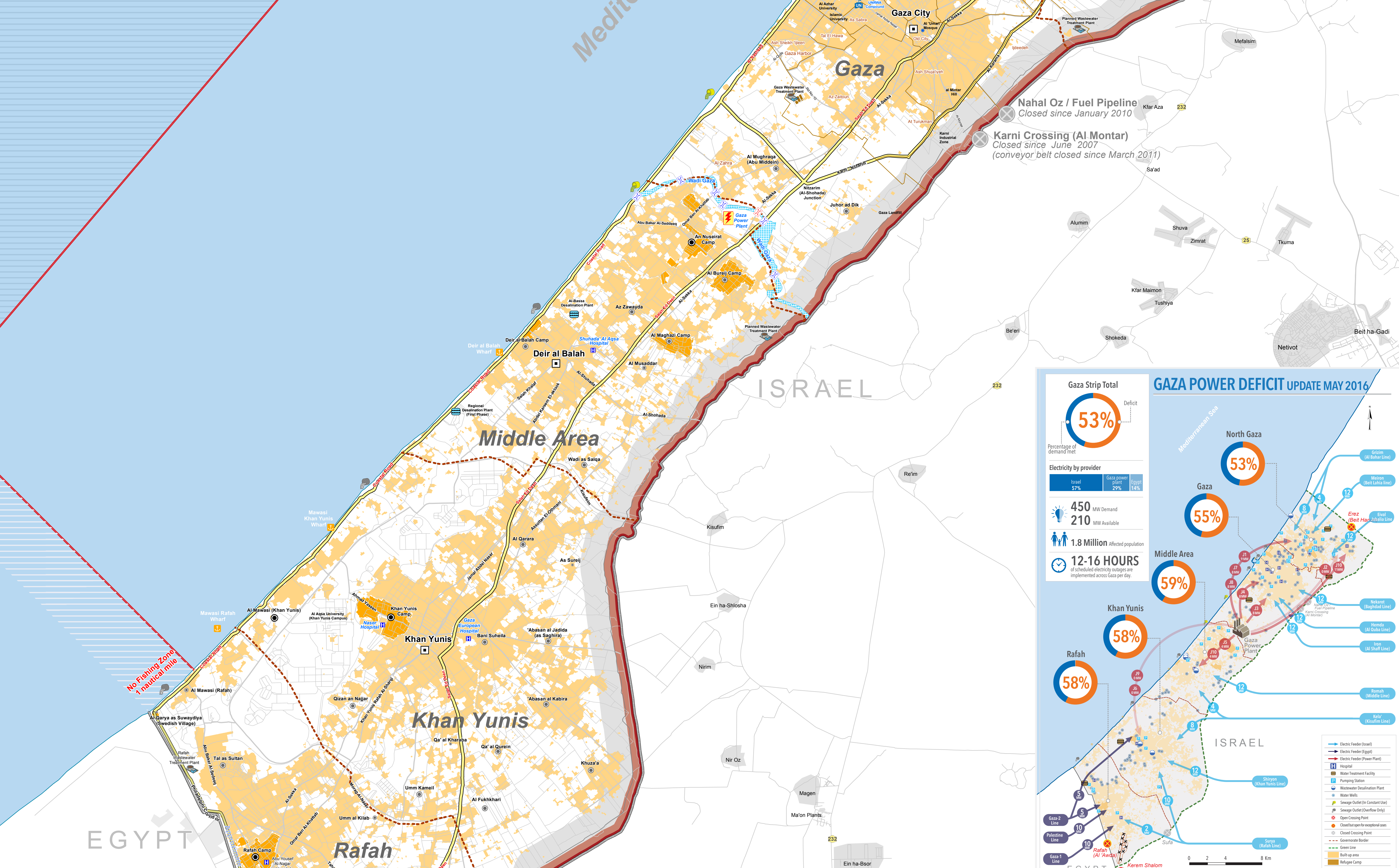
**EREZ CROSSING (BEIT HANOUN)**  
OPEN six days a week (daytime) for the movement of international workers and a limited number of authorized Palestinians including medical referrals, humanitarian cases, businessmen and aid workers, controlled by Israel.



Egypt

6 nautical miles Fishing Limit Enforced by IDF (Ceasefire Agreement-November 2012)

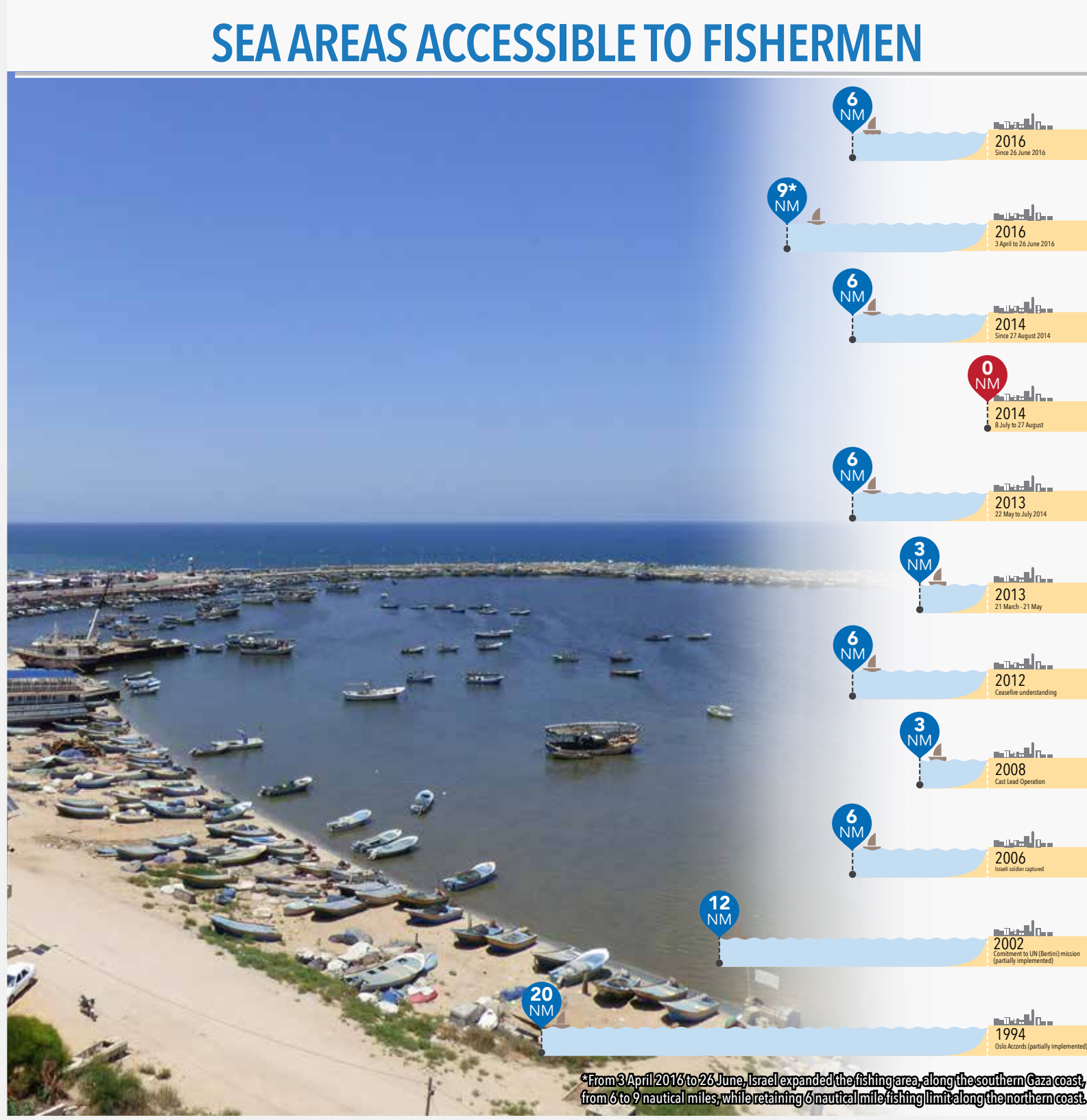
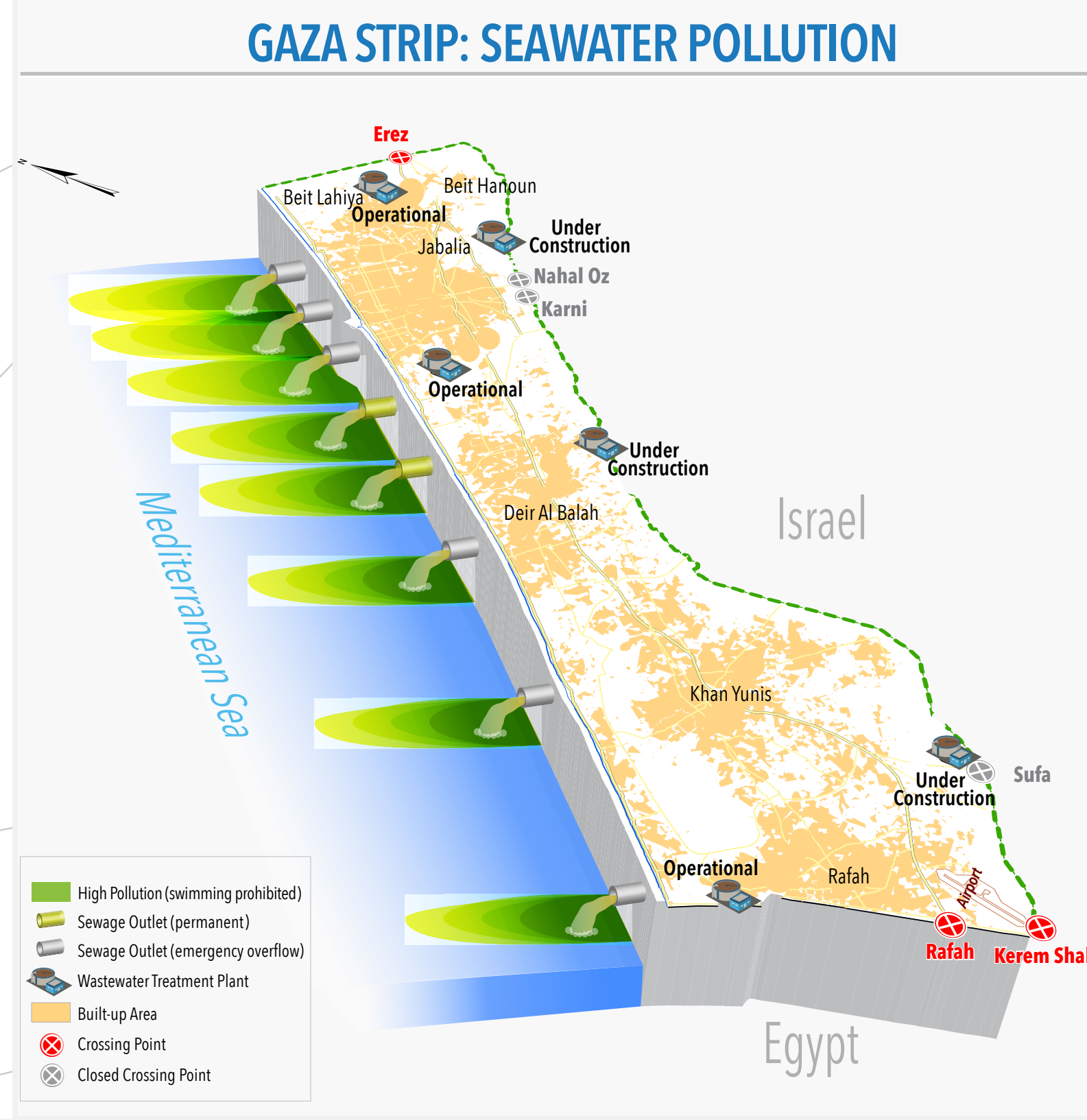
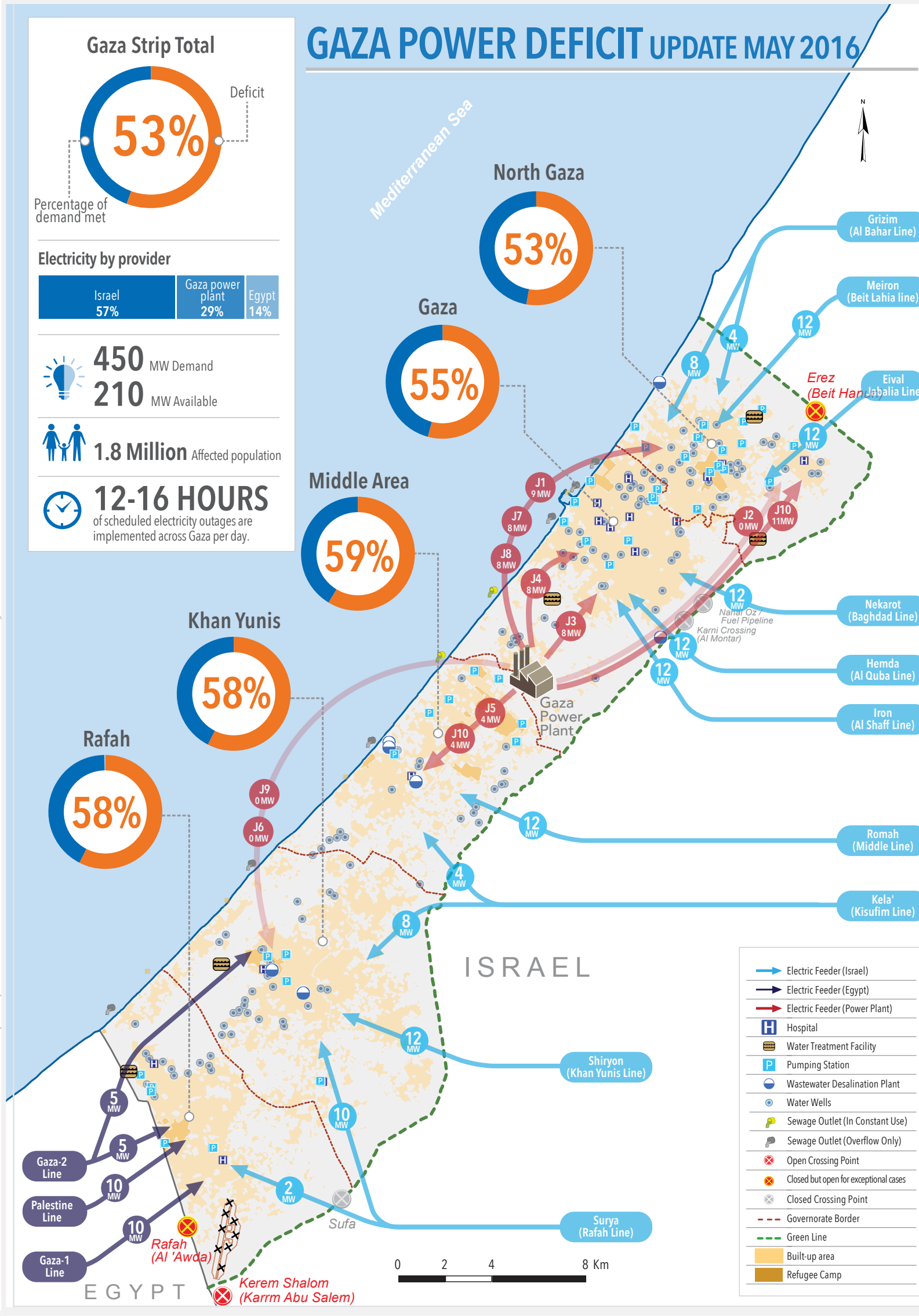
No Fishing Zone 1.5 nautical miles



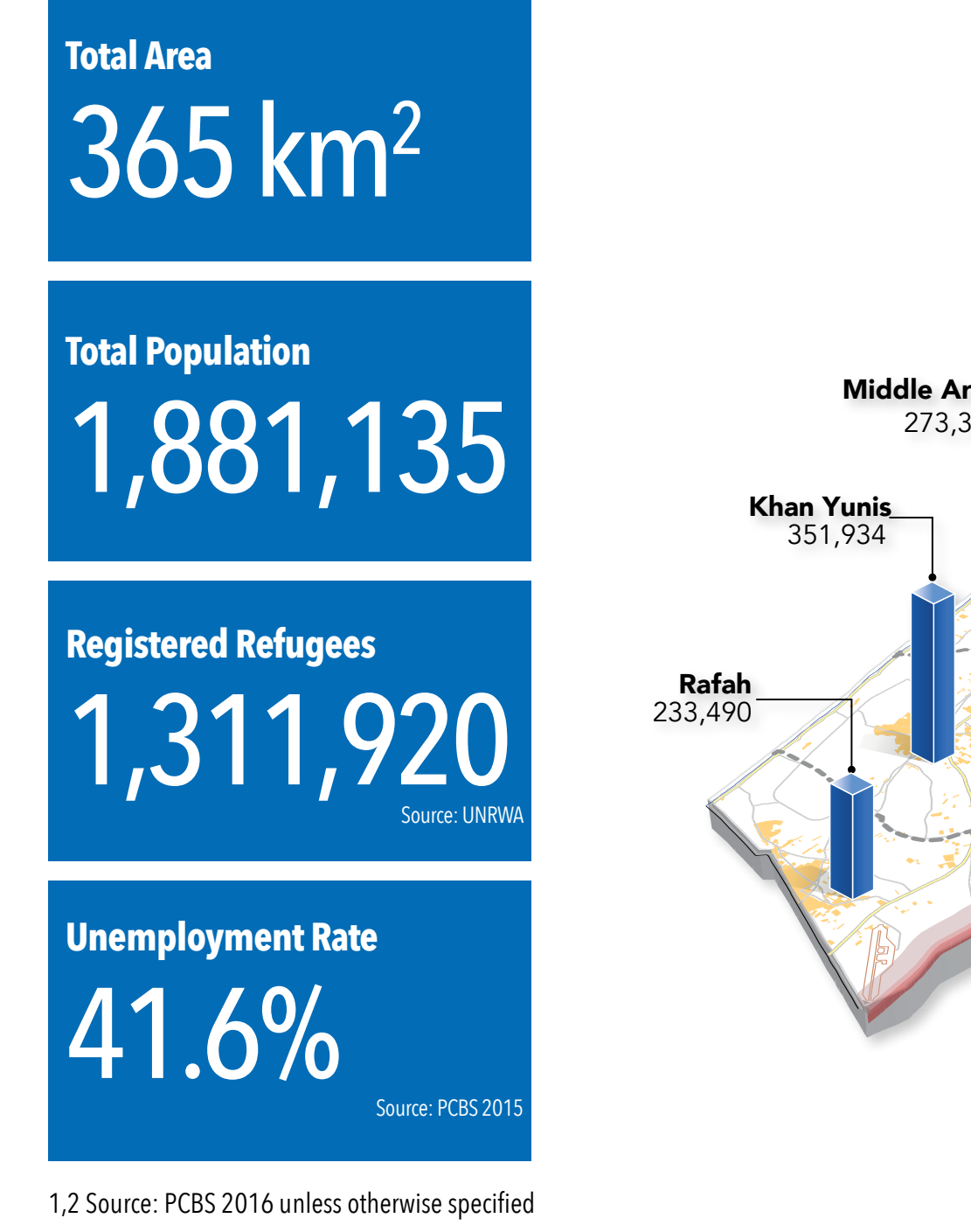
**RAFAH (AL 'AWDA)**  
CLOSED but partially open on an exceptional basis for a limited number of authorized people, controlled by Egypt.



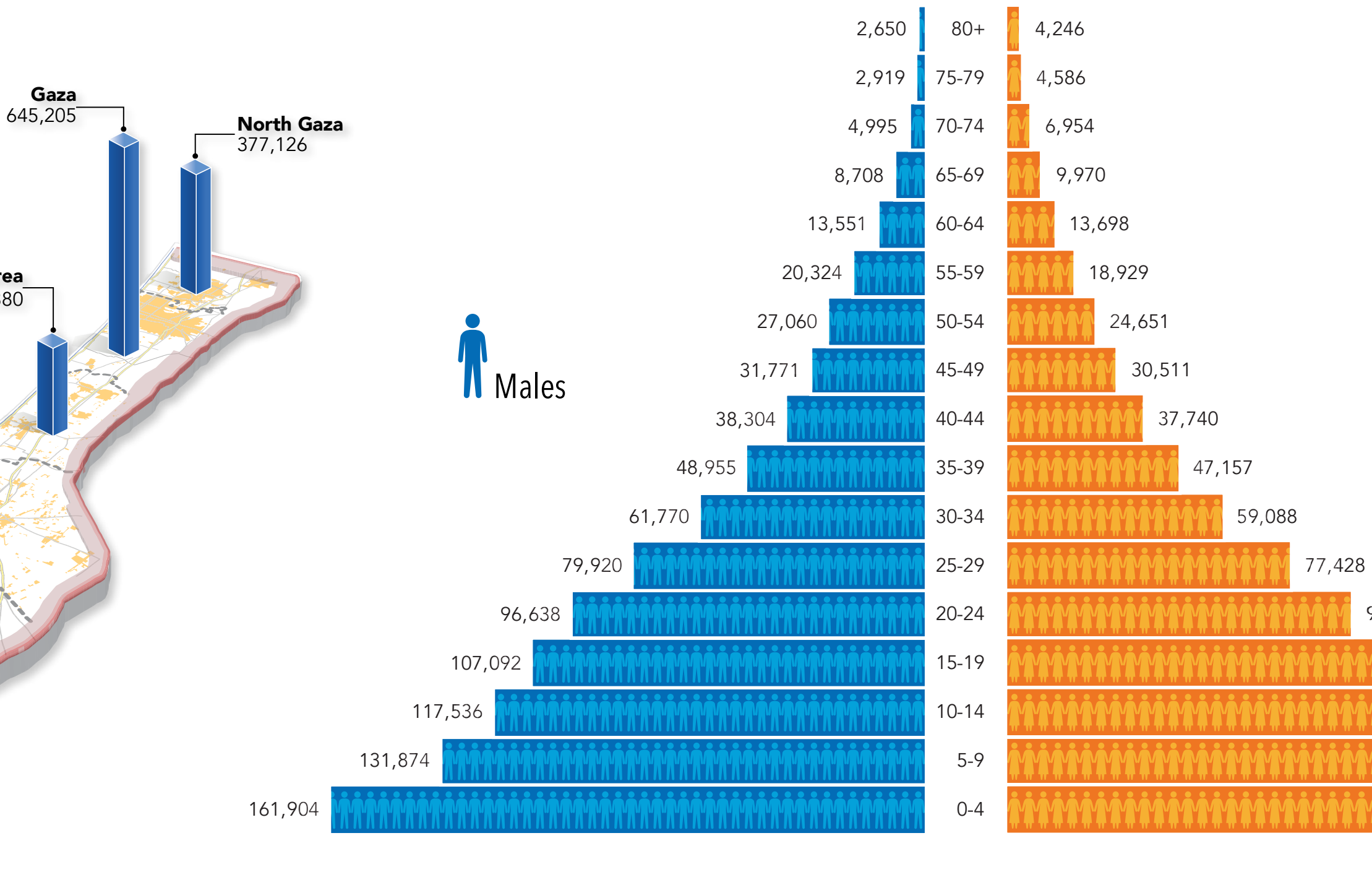
**KEREM SHALOM (KARM ABU SALEM)**  
OPEN five days a week (daytime) for the movement of authorized goods only, controlled by Israel.



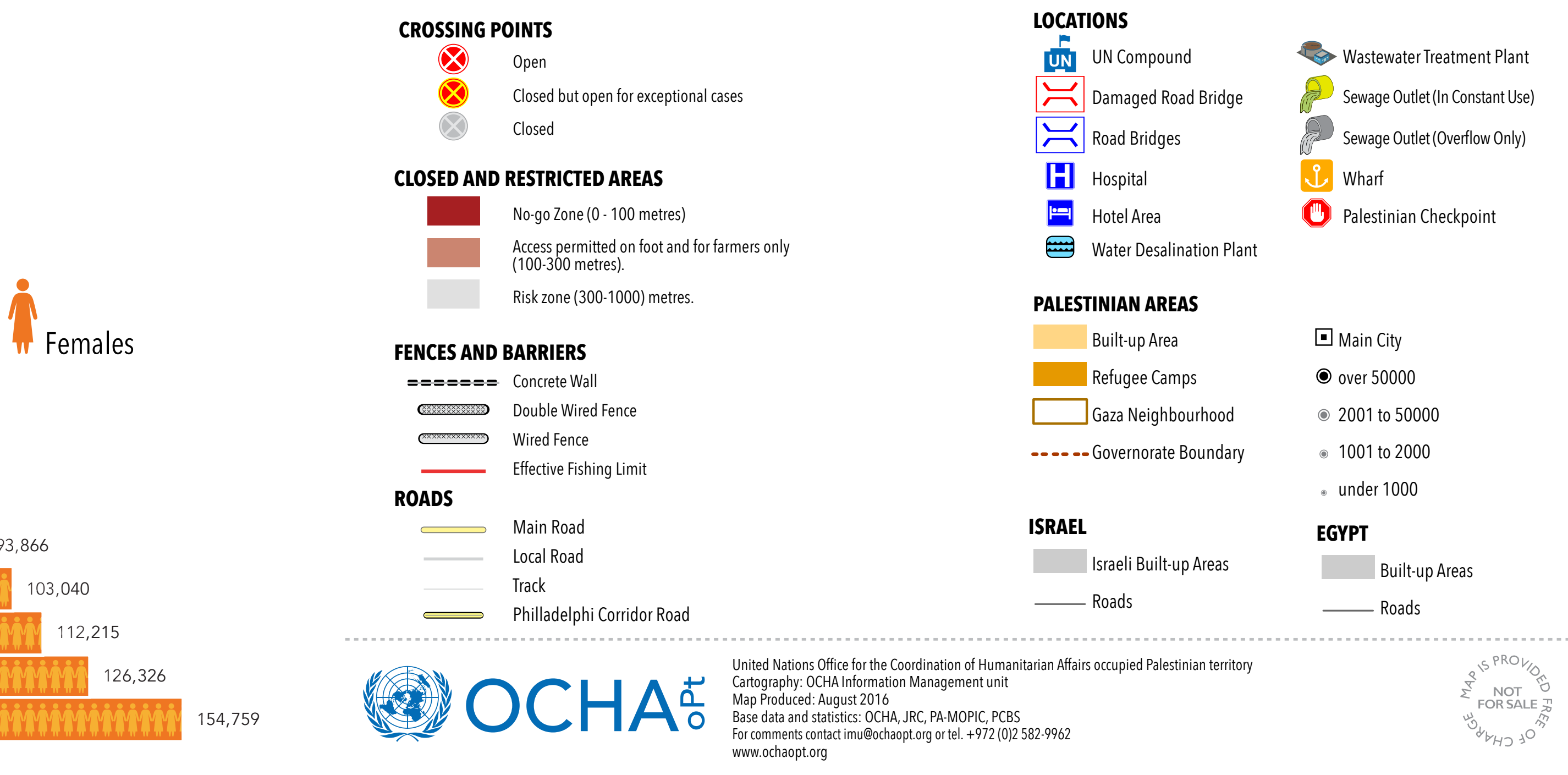
**GAZA STRIP KEY FACTS<sup>1</sup>**



**GAZA STRIP POPULATION AND AGE DISTRIBUTION<sup>2</sup>**



**ACCESS AND PHYSICAL CLOSURES**



The designations employed and the presentation of material on this map do not imply the expression of any opinion whatsoever on the part of the Secretariat of the United Nations concerning the legal status of any country, territory, city or area or of its authorities, or concerning the delimitation of its frontiers or boundaries. Reproduction and/or use of this material is only permitted with express reference to "United Nations OCHA-QP" as the source.