

Closed Villages Project - Villages isolated from their natural centers

Palestinians without permits (the large majority of the population)










Bethlehem 1 cluster

In 2000, villagers would access Bethlehem along road 60 for their services. In 2005, road 60 and 367 are closed to Palestinian traffic making these villages inaccessible by car. In order to cope, a local school has been created and villagers walk to Beit Fajar for health services.




These villages are inaccessible by car

Village	Population
Khallet Zakariya	80
Khallet Afana	40
Total Population:	120


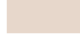

Closures

-  Checkpoint
-  Earthmound
-  Partial Checkpoint
-  Road Gate
-  Roadblock
-  Under / Overpass
-  Constructed Barrier
-  Projected Barrier
-  Under Construction



Prohibited Roads

-  Partially Prohibited
-  Restricted Use
-  Totally Prohibited

Localities



-  Closed Villages
-  Palestinian localities
-  Natural center

Access routes

-  Road used today
-  Road prior to Intifada

INACCESSIBLE BY CAR

Comparing situations Pre-Intifada and August 2005

-  Year 2000
-  August 2005



Travel Time (min)

Jerusalem

Bethlehem

367
Closed village cluster
Bethlehem 1

Closure mapping is a work in progress. Closure data is collected by OCHA field staff and is subject to change. Maps will be updated regularly. Cartography: OCHA Humanitarian Information Centre - October 2005. Base data: OCHA update August 2005.

0 1 2 3 6

Kilometers



For comments contact <ochaopt@un.org>
Tel. +972 (02) 582-9962 <http://www.ochaopt.org>

Closed Villages Project - Villages isolated from their natural centers

Palestinians without permits (the large majority of the population)

**Bethlehem 2 cluster**

In 2000, Palestinians from this village accessed Bethlehem with roads 354, 367 and 60. In 2005, all access south is blocked and 367 and 60 are prohibited to Palestinian traffic.

This village is inaccessible by car

Village	Population
Al Jab'a	929
Total Population:	929

Comparing situations Pre-Intifada and August 2005

- Year 2000
- August 2005

INACCESSIBLE BY CAR

■ 25

Travel Time (min)

Closures

- ⊘ Checkpoint
- ▲ Earthmound
- ⊕ Partial Checkpoint
- ✕ Road Gate
- Roadblock
- P Under / Overpass
- Constructed Barrier
- Projected Barrier
- Under Construction

Prohibited Roads

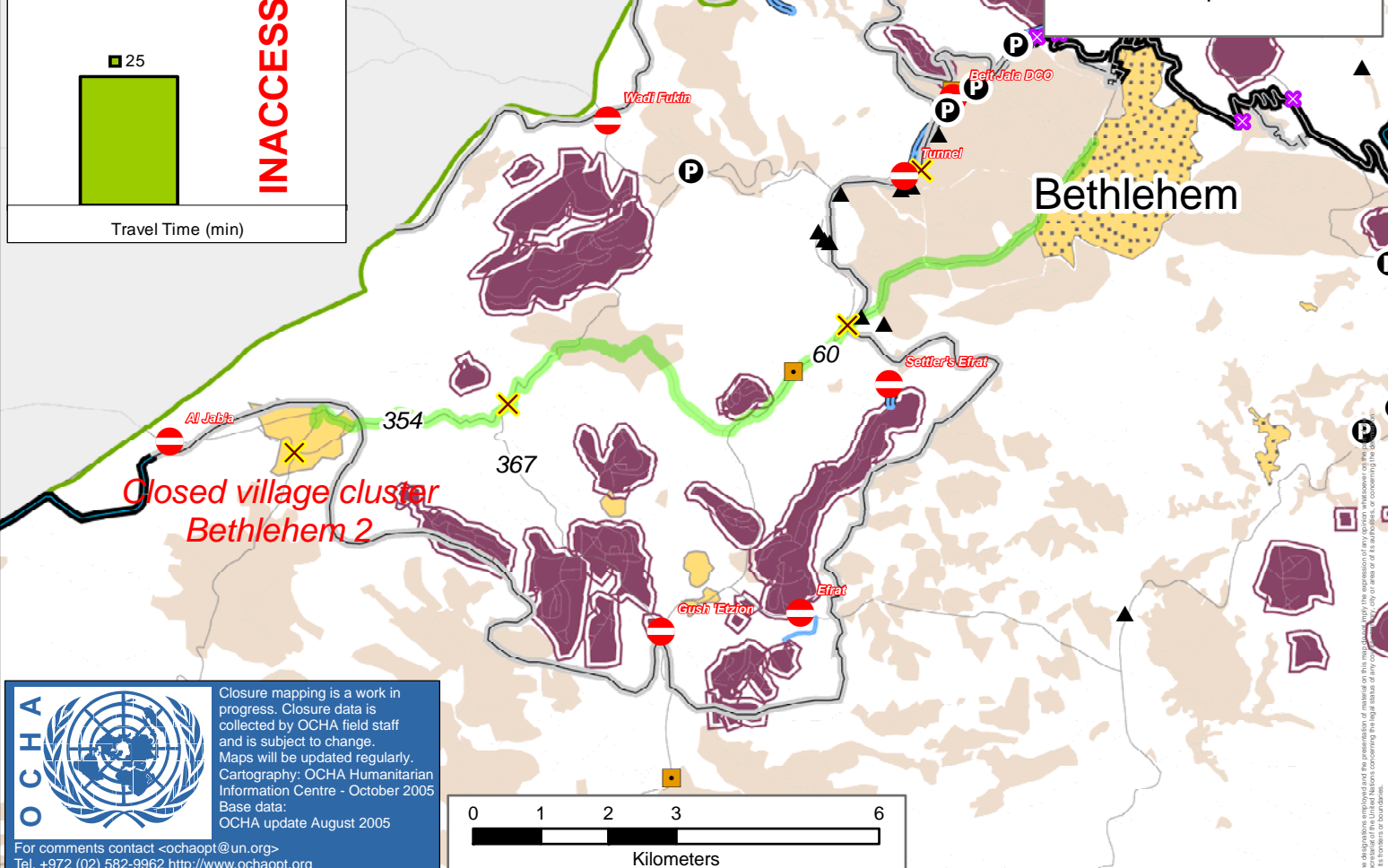
- Partially Prohibited
- Restricted Use
- Totally Prohibited

Localities

- Closed Villages
- Palestinian localities
- Natural center

Access routes

- Road used today
- Road prior to Intifada



Closure mapping is a work in progress. Closure data is collected by OCHA field staff and is subject to change. Maps will be updated regularly. Cartography: OCHA Humanitarian Information Centre - October 2005. Base data: OCHA update August 2005.

For comments contact <ochaopt@un.org>
Tel. +972 (02) 582-9962 <http://www.ochaopt.org>

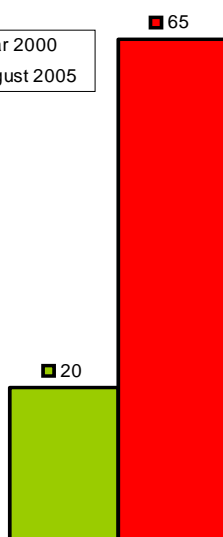
Closed Villages Project - Villages isolated from their natural centers

Palestinians without permits (the large majority of the population)



Comparing situations Pre-Intifada and August 2005

■ Year 2000
■ August 2005



Travel Time (min)

Hebron 1 cluster

Prior to 2000, socio-economic life of these villagers's lives gravitated around Beit Awwa. In 2005, all Palestinian traffic is prohibited across Beit Awwa checkpoint, modifying the socio-economic patterns of these villages.

Village	Population
Tawas	136
Al Majd	1699
Deir al 'Asal at Tahta	570
Khirbet Abu Hamid	0
Deir al 'Asal al Fauqa	1895
Iskeik	171
Beit ar Rush at Tahta	570
Abu Suhweila	34
Beit Mirsim	269
Beit ar Rush al Fauqa	901
Al Burj	2300
Juwai & Kafr Jul	0
Somara	27
As Sikka	50
Al Bireh	291
Jad Allah/ Family	36
Total Population:	8949

Closures

- Checkpoint
- Earthmound
- Partial Checkpoint
- Road Gate
- Roadblock
- Under / Overpass
- Constructed Barrier
- Projected Barrier
- Under Construction

Prohibited Roads

- Partially Prohibited
- Restricted Use
- Totally Prohibited

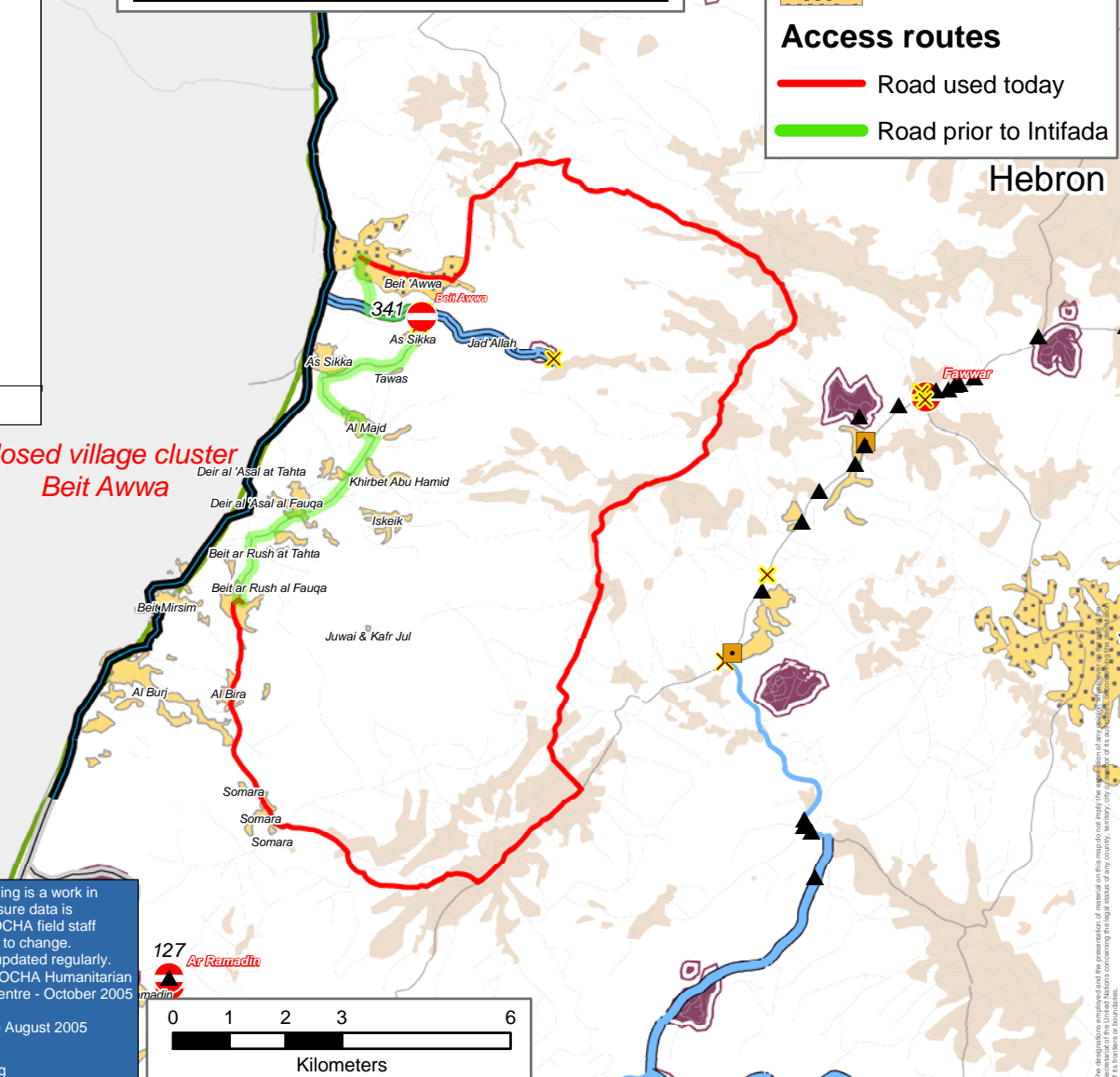
Localities

- Closed Villages
- Palestinian localities
- Natural center

Access routes

- Road used today
- Road prior to Intifada

**Closed village cluster
Beit Awwa**



Closure mapping is a work in progress. Closure data is collected by OCHA field staff and is subject to change. Maps will be updated regularly. Cartography: OCHA Humanitarian Information Centre - October 2005. Base data: OCHA update August 2005.

For comments contact <ochaopt@un.org>
Tel. +972 (02) 582-9962 <http://www.ochaopt.org>

127

Ar Ramadha



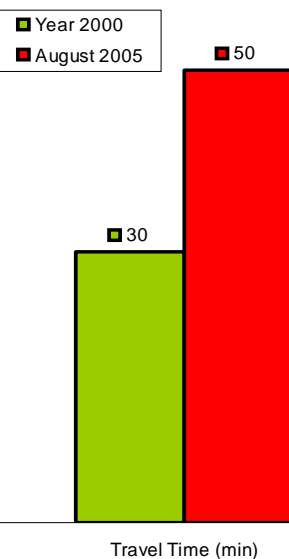
Kilometers

Closed Villages Project - Villages isolated from their natural centers

Palestinians without permits (the large majority of the population)



Comparing situations Pre-Intifada and August 2005

**Hebron 2 cluster**

The villages of this cluster are inhabited by members of the same Bedouin tribe. Ar Ramadin checkpoint, established in October of 2005, splits the community prohibiting members of the same family from visiting each other at will.

The checkpoint also impedes access to Ad Dahariya, the main urban center.

Village	Population
Ar Ramadin	2866
'Arab al Fureijat	397
Anab al Kabir	287
Total Population:	3550

Closures

- Checkpoint
- Earthmound
- Partial Checkpoint
- Road Gate
- Roadblock
- Under / Overpass
- Constructed Barrier
- Projected Barrier
- Under Construction

Prohibited Roads

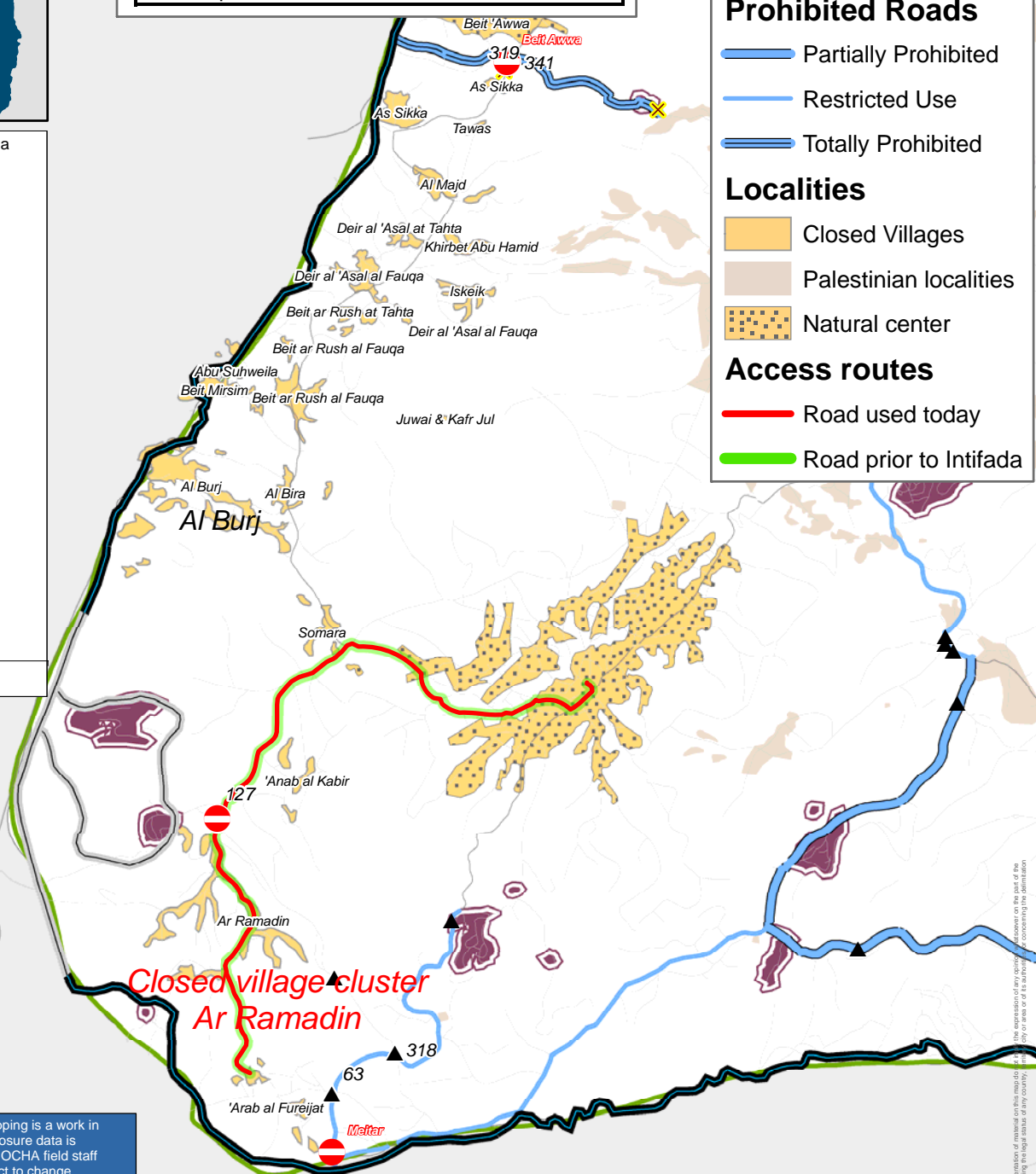
- Partially Prohibited
- Restricted Use
- Totally Prohibited

Localities

- Closed Villages
- Palestinian localities
- Natural center

Access routes

- Road used today
- Road prior to Intifada



Closure mapping is a work in progress. Closure data is collected by OCHA field staff and is subject to change. Maps will be updated regularly. Cartography: OCHA Humanitarian Information Centre - October 2005. Base data: OCHA update August 2005.

For comments contact <ochaopt@un.org>
Tel. +972 (02) 582-9962 <http://www.ochaopt.org>

Closed Villages Project - Villages isolated from their natural centers

Palestinians without permits (the large majority of the population)

**Hebron 3 cluster**

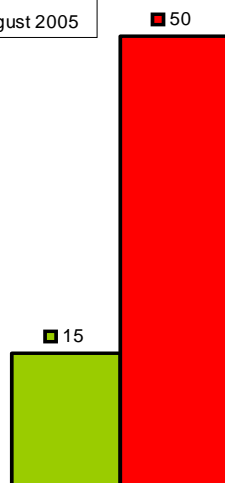
In 2000, Palestinians from this cluster could access Yatta by car in 15 minutes, in 2005 they are prohibited from using road 317 and must walk over 1 km and find alternative transport for the remaining 8km into Yatta.

These villages are inaccessible by car

Village	Population
Ar Rifa'iyya	304
Ad Deirat	367
Total Population:	671

Comparing situations Pre-Intifada and August 2005

■ Year 2000
■ August 2005



Travel Time (min)

Closures

- Checkpoint
- Earthmound
- Partial Checkpoint
- Road Gate
- Roadblock
- Under / Overpass
- Constructed Barrier
- Projected Barrier
- Under Construction

Prohibited Roads

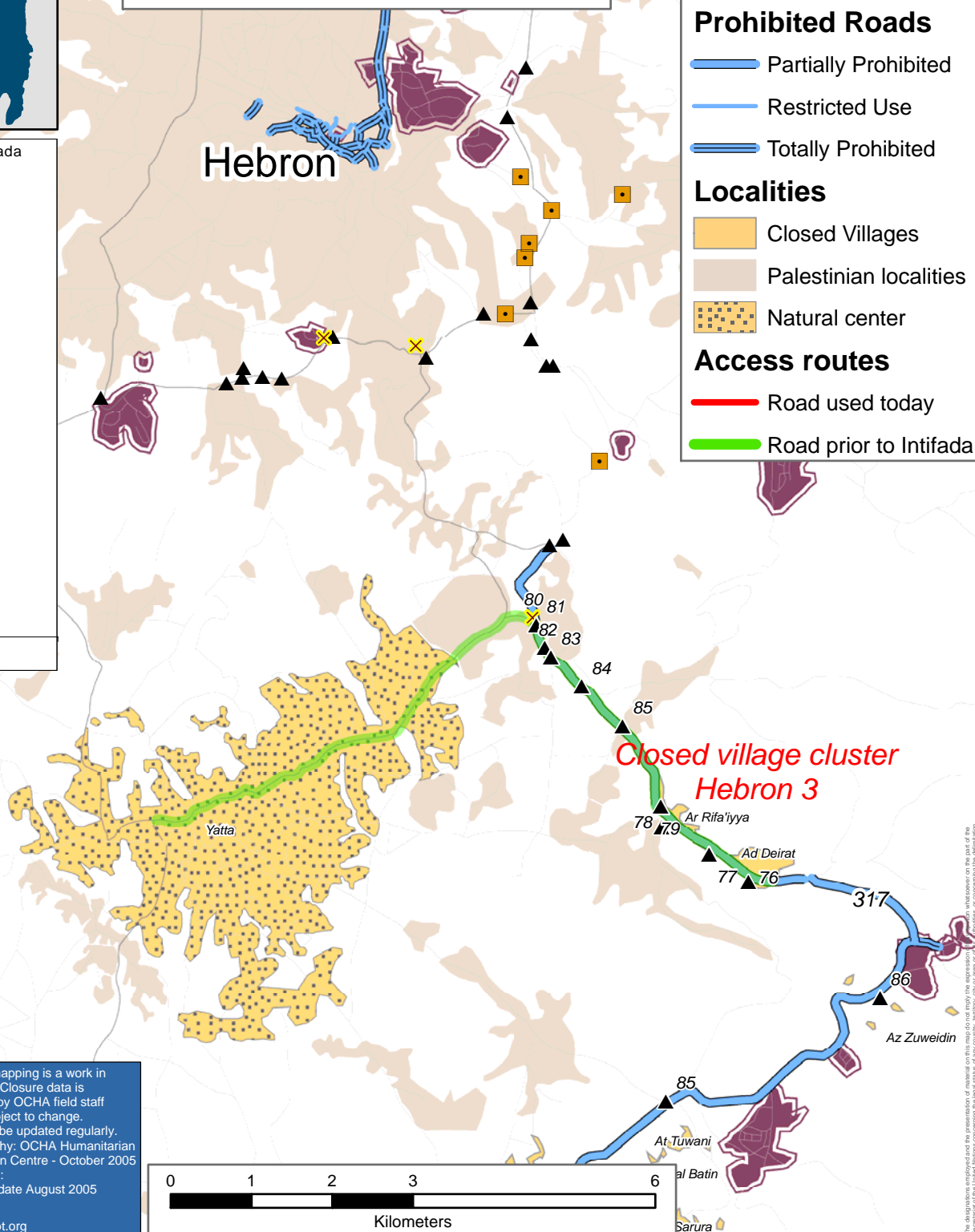
- Partially Prohibited
- Restricted Use
- Totally Prohibited

Localities

- Closed Villages
- Palestinian localities
- Natural center

Access routes

- Road used today
- Road prior to Intifada



Closure mapping is a work in progress. Closure data is collected by OCHA field staff and is subject to change. Maps will be updated regularly. Cartography: OCHA Humanitarian Information Centre - October 2005. Base data: OCHA update August 2005.

For comments contact <ochaopt@un.org>
Tel. +972 (02) 582-9962 <http://www.ochaopt.org>

Closed Villages Project - Villages isolated from their natural centers

Palestinians without permits (the large majority of the population)



Comparing situations Pre-Intifada and August 2005

- Year 2000
- August 2005

INACCESSIBLE BY CAR

40

Travel Time (min)

Hebron 4 cluster

In 2000, Khirbet Tawil ash Shih was 40 minutes drive from Yatta. In 2005, use of road 317 is prohibited and earthmounds prevent cross traffic. Palestinians must walk 8 km to cross road 317 and find transport on the otherside to complete the 16 km trip.

These villages are inaccessible by car

Village	Population
Az Zuweidin	549
Al Faqir	383
An Najada	221
Khashem al Karem	553
Khirbet Tawil ash Shih	0
Total Population:	1706

Closures

- Checkpoint
- ▲ Earthmound
- Partial Checkpoint
- ✕ Road Gate
- Roadblock
- Ⓟ Under / Overpass
- Constructed Barrier
- Projected Barrier
- Under Construction

Prohibited Roads

- Partially Prohibited
- Restricted Use
- Totally Prohibited

Localities

- Closed Villages
- Palestinian localities
- Natural center

Access routes

- Road used today
- Road prior to Intifada

Hebron

Yatta

Closed village cluster Hebron-3

0 1 2 3 4 5 6

Kilometers



Closure mapping is a work in progress. Closure data is collected by OCHA field staff and is subject to change. Maps will be updated regularly. Cartography: OCHA Humanitarian Information Centre - October 2005. Base data: OCHA update August 2005.

For comments contact <ochaopt@un.org>
Tel. +972 (02) 582-9962 <http://www.ochaopt.org>

Closed Villages Project - Villages isolated from their natural centers










Palestinians without permits (the large majority of the population)

Hebron 5 cluster




In 2000, Palestinians from this cluster could access Yatta by car in 25 minutes, in 2005 they are prohibited from using road 317 and must walk up to 8 km and find alternative transport to complete the 16 km trip to Yatta.

These villages are inaccessible by car




Closures

-  Checkpoint
-  Earthmound
-  Partial Checkpoint
-  Road Gate
-  Roadblock
-  Under / Overpass
-  Constructed Barrier
-  Projected Barrier
-  Under Construction



Prohibited Roads

-  Partially Prohibited
-  Restricted Use
-  Totally Prohibited

Localities



-  Closed Villages
-  Palestinian localities
-  Natural center

Access routes

-  Road used today
-  Road prior to Intifada



Comparing situations Pre-Intifada and August 2005

-  Year 2000
-  August 2005

INACCESSIBLE BY CAR

25

Travel Time (min)

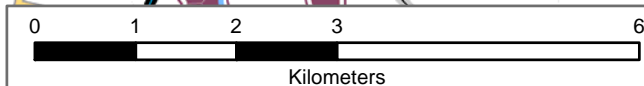
Village	Population
At Tuwani	180
Jinba	216
Mirkez	42
Tuba	78
Um Fagarah	59
Saadet Tha'lah	100
Halaweh	52
Khirbet at Tabban	95
Khirbet al Majaz	90
Maghayir al 'Abeed	47
Khirbet al Fakheit	0
Khirbet at Tawamin	24
Khirbet Bir al 'Idd	136
Ar Rakeez	0
Khirbet Sarura	0
Khirbet Asafi/ Isfey Foqa	109
Khirbet al Maq'ura/ Isfey Tihta	81
Mantiqat Shi'b al Batin	144
Qawawis	37

Total Population: 1490

Closure mapping is a work in progress. Closure data is collected by OCHA field staff and is subject to change. Maps will be updated regularly. Cartography: OCHA Humanitarian Information Centre - October 2005. Base data: OCHA update August 2005.



For comments contact <ochaopt@un.org>
Tel. +972 (02) 582-9962 <http://www.ochaopt.org>



Closed Villages Project - Villages isolated from their natural centers

Palestinians without permits (the large majority of the population)

**Hebron 6 cluster**

In 2000, Imnezil was 25 minutes from Yatta. In 2005, usage and crossing of road 317 is prohibited and people must walk up to 2 km before crossing it. The only access to Imnezil has been but by the path of the barrier. No alternate route has been built.

These villages are inaccessible by car

Village	Population
Imnezil	251
Haribat an Nabi	50
Khirbet al Kharaba	20
Khirbet Ghuwein Al Foqa	44
Zanuta	55
Total Population:	420

Closures

- Checkpoint
- Earthmound
- Partial Checkpoint
- Road Gate
- Roadblock
- Under / Overpass
- Constructed Barrier
- Projected Barrier
- Under Construction

Prohibited Roads

- Partially Prohibited
- Restricted Use
- Totally Prohibited

Localities

- Closed Villages
- Palestinian localities
- Natural center

Access routes

- Road used today
- Road prior to Intifada

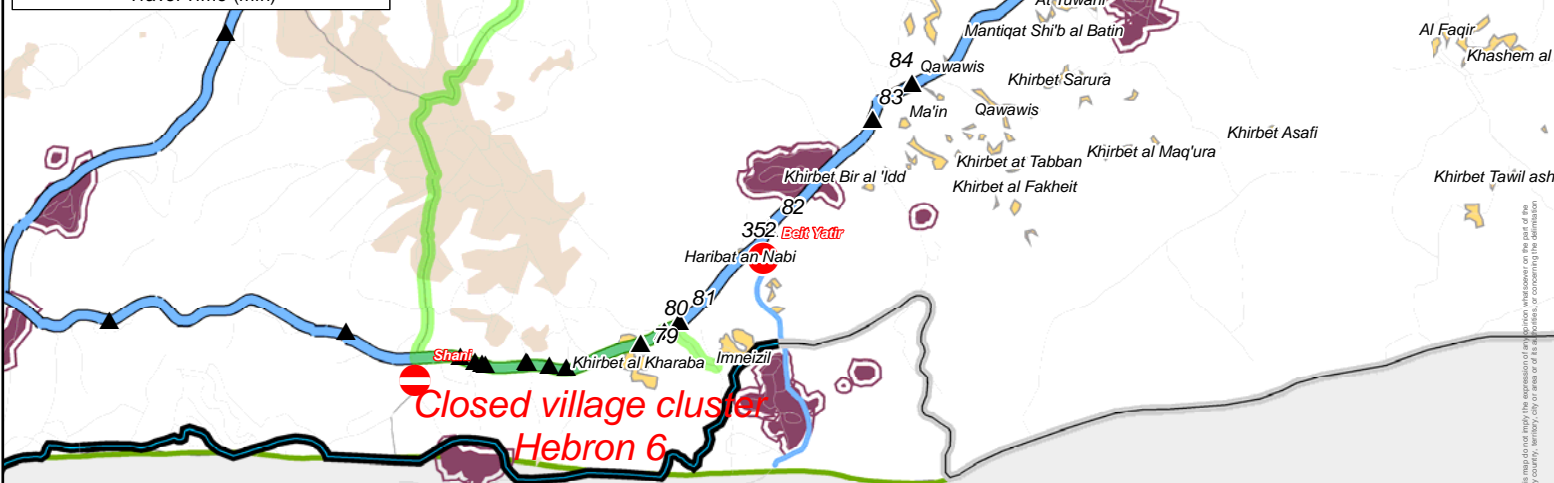
Comparing situations Pre-Intifada and August 2005

- Year 2000
- August 2005

INACCESSIBLE BY CAR

■ 25

Travel Time (min)



Closure mapping is a work in progress. Closure data is collected by OCHA field staff and is subject to change. Maps will be updated regularly. Cartography: OCHA Humanitarian Information Centre - October 2005. Base data: OCHA update August 2005.

For comments contact <ochaopt@un.org>
Tel. +972 (02) 582-9962 <http://www.ochaopt.org>

0 1 2 3
Kilometers

Closed Villages Project - Villages isolated from their natural centers

Palestinians without permits (the large majority of the population)

**Hebron 7 cluster**

In 2000, Palestinians from Susiya accessed Yatta from road 317. In 2005, they are prohibited from using road 317 and no longer have vehicular access to the city.

This village is inaccessible by car

Village	Population
Susiya	183
Total Population:	183

Closures

- Checkpoint
- Earthmound
- Partial Checkpoint
- Road Gate
- Roadblock
- Under / Overpass
- Constructed Barrier
- Projected Barrier
- Under Construction

Prohibited Roads

- Partially Prohibited
- Restricted Use
- Totally Prohibited

Localities

- Closed Villages
- Palestinian localities
- Natural center

Access routes

- Road used today
- Road prior to Intifada

Comparing situations Pre-Intifada and August 2005

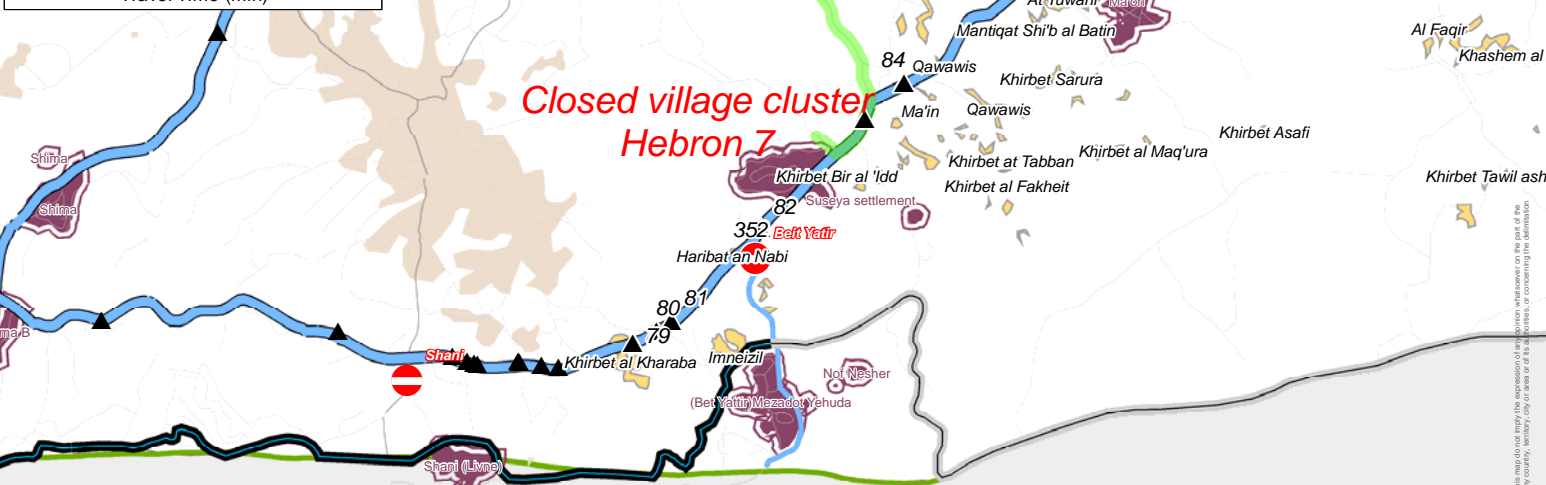
- Year 2000
- August 2005

INACCESSIBLE BY CAR

25

Travel Time (min)

**Closed village cluster
Hebron 7**



Closure mapping is a work in progress. Closure data is collected by OCHA field staff and is subject to change. Maps will be updated regularly. Cartography: OCHA Humanitarian Information Centre - October 2005. Base data: OCHA update August 2005.

For comments contact <ochaopt@un.org>
Tel. +972 (02) 582-9962 <http://www.ochaopt.org>

0 1 2 3
Kilometers

Closed Villages Project - Villages isolated from their natural centers

Palestinians without permits (the large majority of the population)

**Hebron 8 cluster**

These villages give solely onto road 60. In 2000, Palestinians accessed these villages from road 60. In 2005, they are completely closed by earthmounds.

These villages are inaccessible by car

Village	Population
Karma	1395
Deir Razih	336
Khirbet Bism	70
Total Population:	1801

Closures

- Checkpoint
- Earthmound
- Partial Checkpoint
- Road Gate
- Roadblock
- Under / Overpass
- Constructed Barrier
- Projected Barrier
- Under Construction

Prohibited Roads

- Partially Prohibited
- Restricted Use
- Totally Prohibited

Localities

- Closed Villages
- Palestinian localities
- Natural center

Access routes

- Road used today
- Road prior to Intifada

Comparing situations Pre-Intifada and August 2005

- Year 2000
- August 2005

INACCESSIBLE BY CAR

■ 20

Travel Time (min)

**Closed village cluster
Hebron 8**

Yariya
Dabariva



Closure mapping is a work in progress. Closure data is collected by OCHA field staff and is subject to change. Maps will be updated regularly. Cartography: OCHA Humanitarian Information Centre - October 2005. Base data: OCHA update August 2005.

For comments contact <ochaopt@un.org>
Tel. +972 (02) 582-9962 <http://www.ochaopt.org>



The designation employed on this map for the purpose of the map is not intended to imply the recognition of any territory, city or other geographical entity. It is for information purposes only.

Closed Villages Project - Villages isolated from their natural centers

Palestinians without permits (the large majority of the population)

**Hebron 9 cluster**

In 2000, villagers from Bani Na'im accessed Hebron passing south of Kyriat Arba settlement. In 2005, access from the South East and the East is prohibited. Palestinians travelling into Hebron must transit through Halhul, 7 km to the north.

Village	Population
Bani Na'im	20348
Masafer Bani Na'im	100
Birin	178
Total Population:	20626

Closures

- Checkpoint
- Earthmound
- Partial Checkpoint
- Road Gate
- Roadblock
- Under / Overpass
- Constructed Barrier
- Projected Barrier
- Under Construction

Prohibited Roads

- Partially Prohibited
- Restricted Use
- Totally Prohibited

Localities

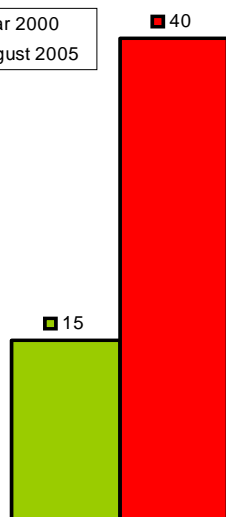
- Closed Villages
- Palestinian localities
- Natural center

Access routes

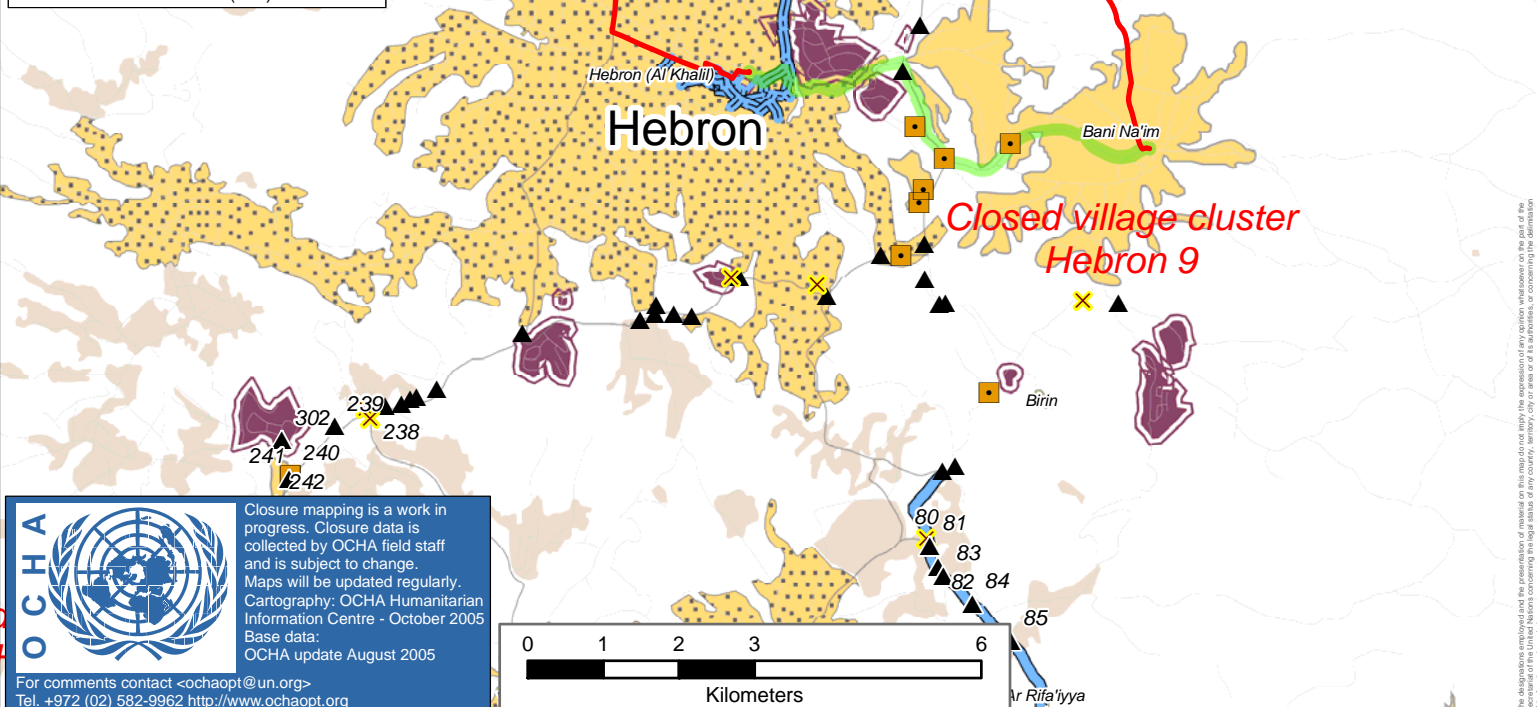
- Road used today
- Road prior to Intifada

Comparing situations Pre-Intifada and August 2005

■ Year 2000
■ August 2005



Travel Time (min)



Closed Villages Project - Villages isolated from their natural centers

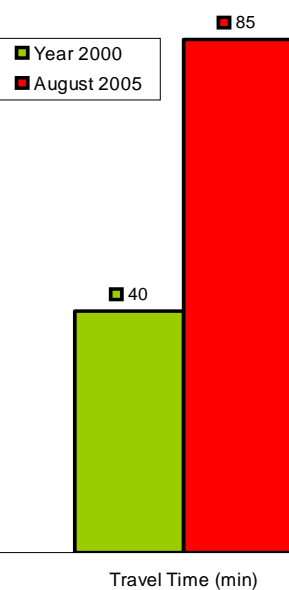
Palestinians without permits (the large majority of the population)

**Jenin 1 cluster**

This cluster is located behind the barrier. Palestinians can only use the Umm Ar Rihan gate, open 3 times a day, or Reikhan checkpoint and must endure administrative delays at the checkpoint and detours.

Village	Population
Umm ar Rihan	385
Khirbet 'Abdallah al Yunis	145
Barta'a ash Sharqiya	3709
Khirbet ash Sheikh Sa'eed	225
Tura al Gharbiya	1142
Khirbet al Muntar al Gharbiya	20
Khirbet al Muntar ash Sharqiya	35
Dhafer al Malih	224
Total Population:	5885

Comparing situations Pre-Intifada and August 2005

**Closed village cluster Jenin 1**

Umm ar Rihan
Umm ar Rihan
Barta'a ash Sharqiya
Khirbet 'Abdallah al Yunis
Khirbet ash Sheikh Sa'eed
Tura al Gharbiya
Tura al Gharbiya
Khirbet al Muntar al Gharbiya
Khirbet al Muntar ash Sharqiya
Reikhan 381

Closures

- Checkpoint
- Earthmound
- Partial Checkpoint
- Road Gate
- Roadblock
- Under / Overpass
- Constructed Barrier
- Projected Barrier
- Under Construction

Prohibited Roads

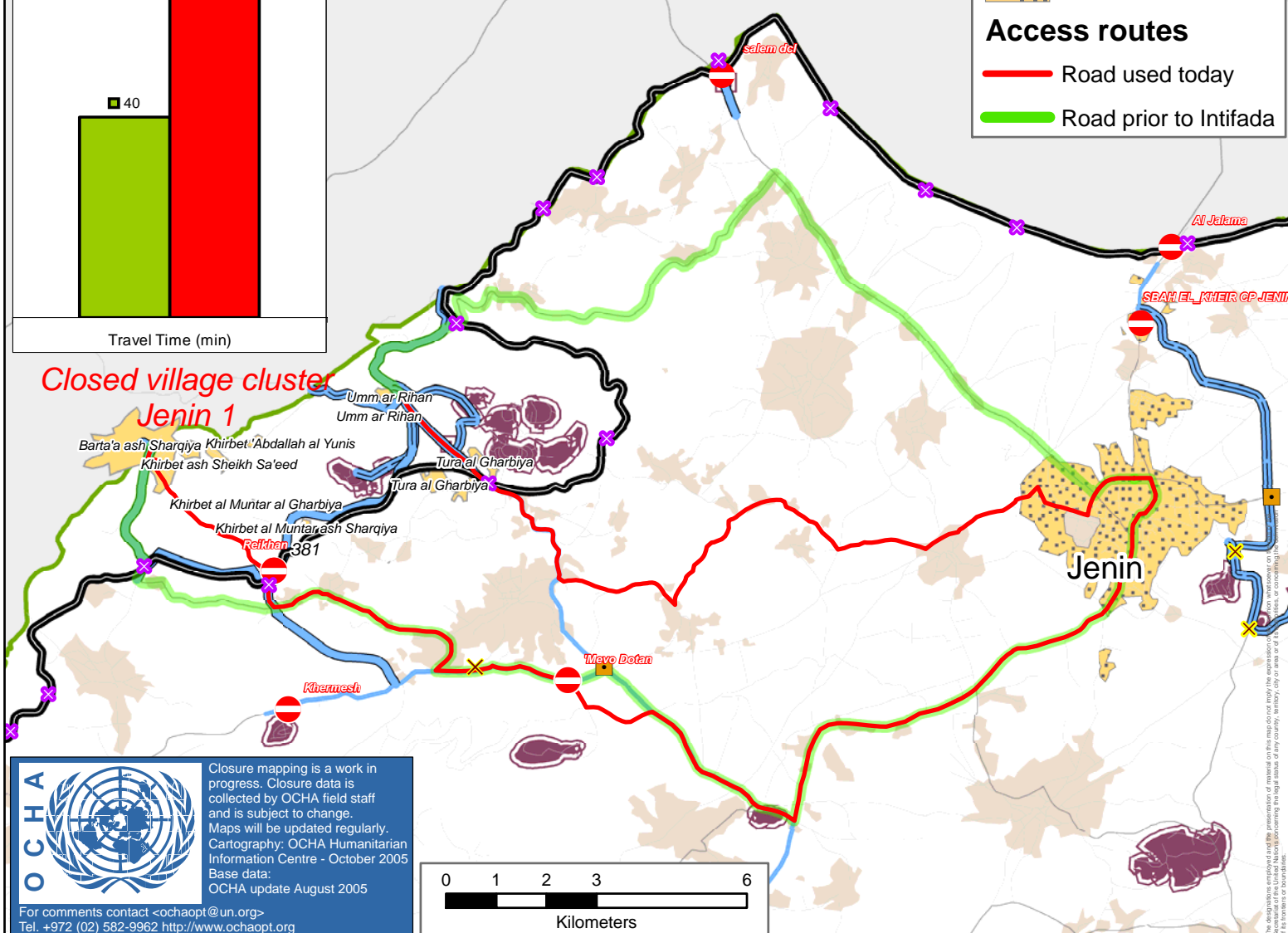
- Partially Prohibited
- Restricted Use
- Totally Prohibited

Localities

- Closed Villages
- Palestinian localities
- Natural center

Access routes

- Road used today
- Road prior to Intifada



Closure mapping is a work in progress. Closure data is collected by OCHA field staff and is subject to change. Maps will be updated regularly. Cartography: OCHA Humanitarian Information Centre - October 2005. Base data: OCHA update August 2005.

For comments contact <ochaopt@un.org>
Tel. +972 (02) 582-9962 <http://www.ochaopt.org>

0 1 2 3 6
Kilometers

This map is not a representation of OCHA's position on the status of the territories shown. It is a representation of the situation on the ground. It is not a map of the West Bank or Gaza Strip. It is a map of the Jenin 1 cluster. It is a map of the Jenin 1 cluster. It is a map of the Jenin 1 cluster.

Closed Villages Project - Villages isolated from their natural centers










Palestinians without permits (the large majority of the population)

Nablus 1 cluster




In September 2000, villagers from this cluster accessed Nablus through a number of direct routes. In 2005, the only entrance to Nablus from the North is via Badhan on the old road 60.

Village	Population
Burqa	2372
Yasid	2360
Beit Imrin	2962
Nisf Jubeil	521
Sabastiya	2992
Ijnisinya	576
An Naqura	1708
'Asira ash Shamaliya	7994
Total Population:	21485




Closures

-  Checkpoint
-  Earthmound
-  Partial Checkpoint
-  Road Gate
-  Roadblock
-  Under / Overpass
-  Constructed Barrier
-  Projected Barrier
-  Under Construction



Prohibited Roads

-  Partially Prohibited
-  Restricted Use
-  Totally Prohibited

Localities

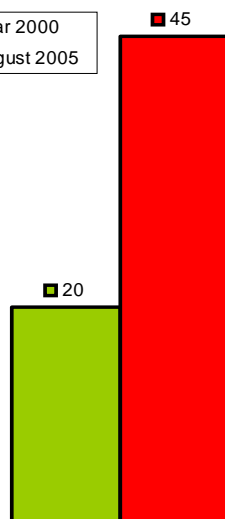
-  Closed Villages
-  Palestinian localities
-  Natural center

Access routes

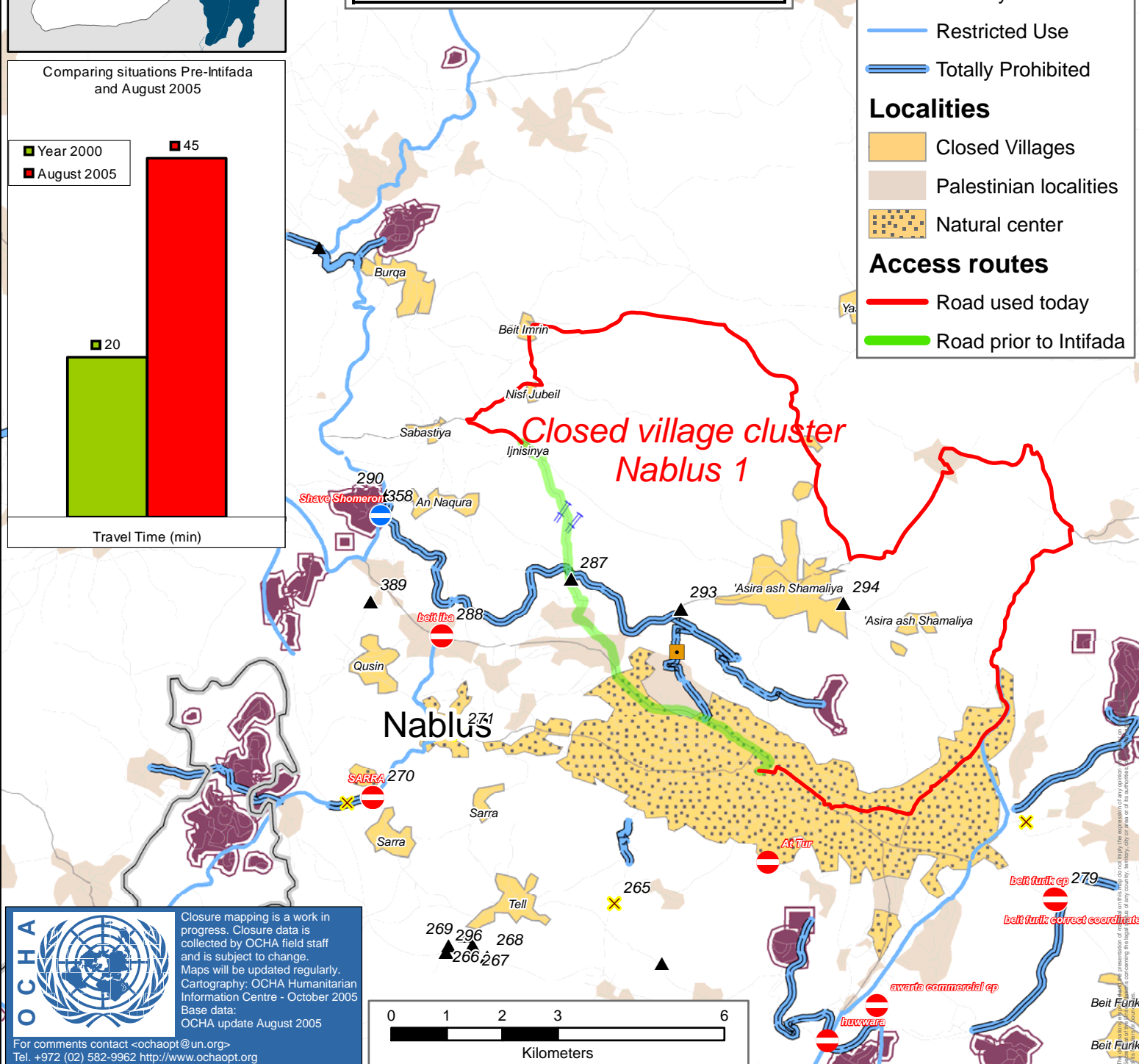
-  Road used today
-  Road prior to Intifada

Comparing situations Pre-Intifada and August 2005

■ Year 2000
■ August 2005



Travel Time (min)

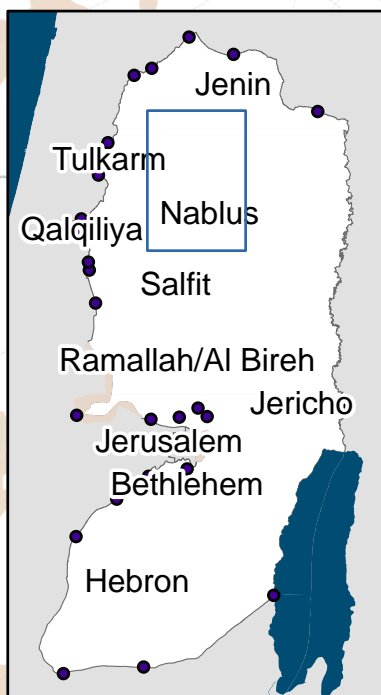


Closure mapping is a work in progress. Closure data is collected by OCHA field staff and is subject to change. Maps will be updated regularly. Cartography: OCHA Humanitarian Information Centre - October 2005. Base data: OCHA update August 2005.

For comments contact <ochaopt@un.org>
Tel. +972 (02) 582-9962 <http://www.ochaopt.org>

Closed Villages Project - Villages isolated from their natural centers

Palestinians without permits (the large majority of the population)

**Nablus 2 cluster**

Prior to the year 2000, these Palestinians had direct access into Nablus. In 2005, they must enter Nablus through Beit Iba checkpoint via Sarra checkpoint.

Village	Population
Sarra	2978
Tell	4882
Total Population:	7860

Closures

- Checkpoint
- Earthmound
- Partial Checkpoint
- Road Gate
- Roadblock
- Under / Overpass
- Constructed Barrier
- Projected Barrier
- Under Construction

Prohibited Roads

- Partially Prohibited
- Restricted Use
- Totally Prohibited

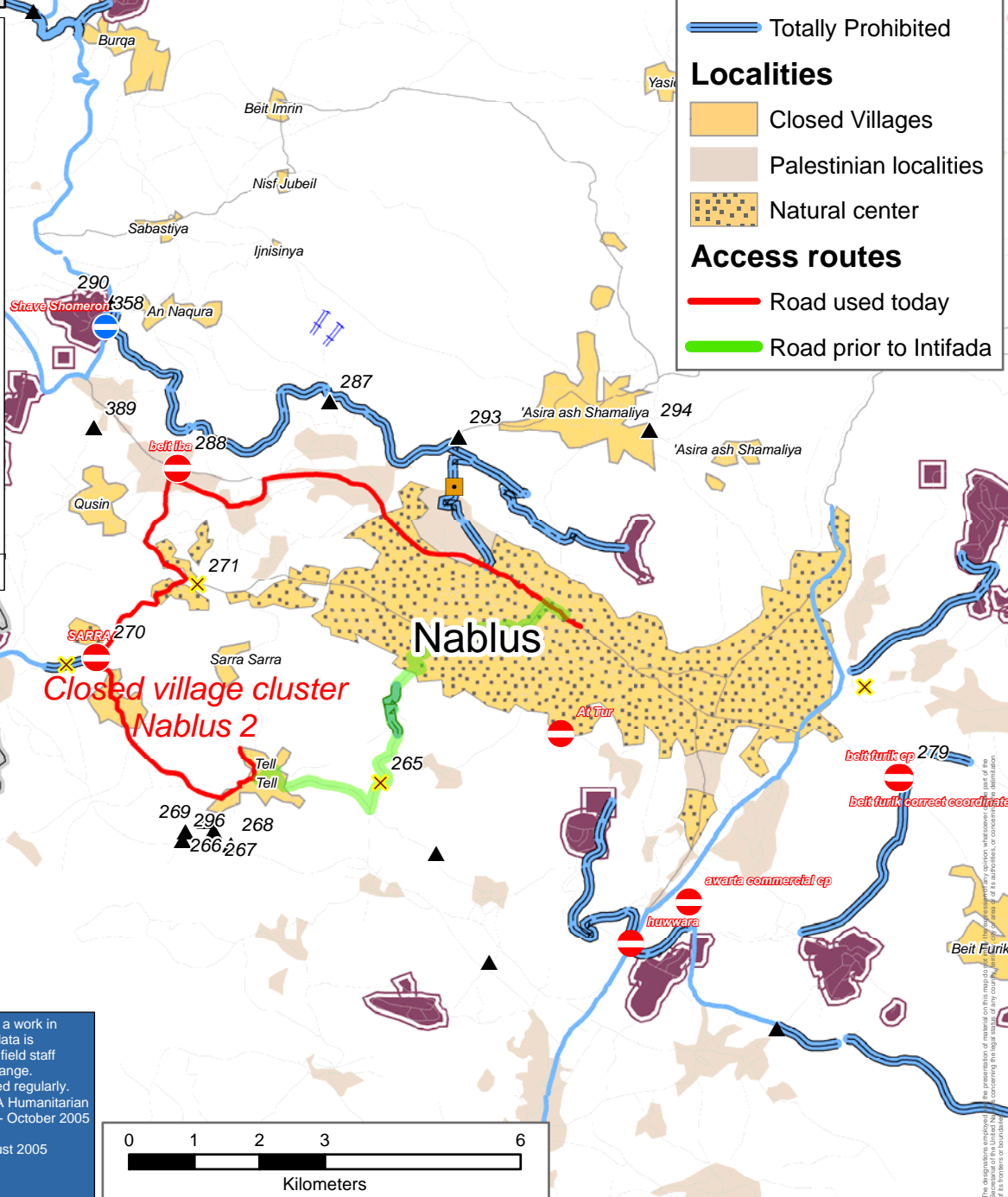
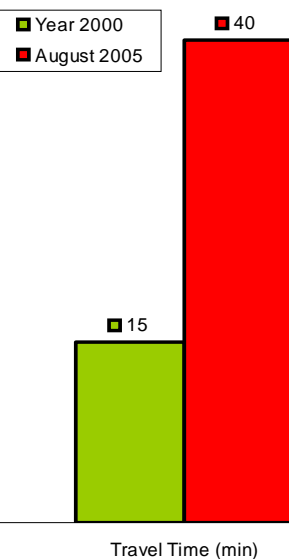
Localities

- Closed Villages
- Palestinian localities
- Natural center

Access routes

- Road used today
- Road prior to Intifada

Comparing situations Pre-Intifada and August 2005



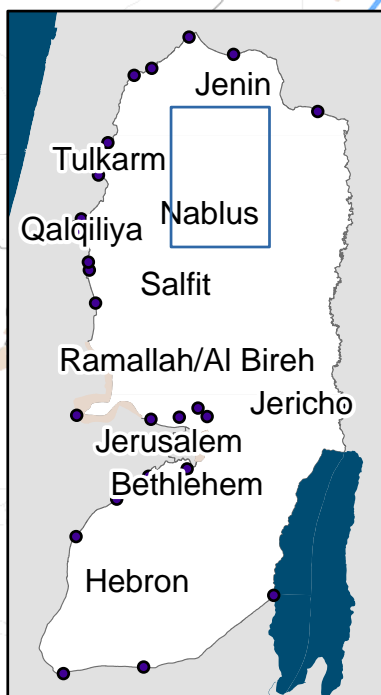
Closure mapping is a work in progress. Closure data is collected by OCHA field staff and is subject to change. Maps will be updated regularly. Cartography: OCHA Humanitarian Information Centre - October 2005. Base data: OCHA update August 2005.

For comments contact <ochaopt@un.org>
Tel. +972 (02) 582-9962 <http://www.ochaopt.org>

This publication is prepared by the Office for the Coordination of Humanitarian Affairs (OCHA) in cooperation with the United Nations Office for the Coordination of Humanitarian Affairs (UNOCHA) and the United Nations Office for the Coordination of Humanitarian Affairs (UNOCHA). It is not intended to be used for any purpose other than the one for which it was prepared.

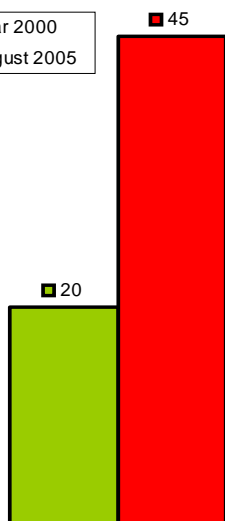
Closed Villages Project - Villages isolated from their natural centers

Palestinians without permits (the large majority of the population)



Comparing situations Pre-Intifada and August 2005

■ Year 2000
■ August 2005



Travel Time (min)

Nablus 3 cluster

Prior to the year 2000, villagers had direct access into Nablus. In 2005, an earthmound prohibits access directly from Beit Dajan and all access must go through Beit Furik checkpoint

Village	Population
Beit Dajan	3696
Beit Furik	10714
Khirbet Tana	N/A
Total Population:	14410

Closures

- Checkpoint
- Earthmound
- Partial Checkpoint
- Road Gate
- Roadblock
- Under / Overpass
- Constructed Barrier
- Projected Barrier
- Under Construction

Prohibited Roads

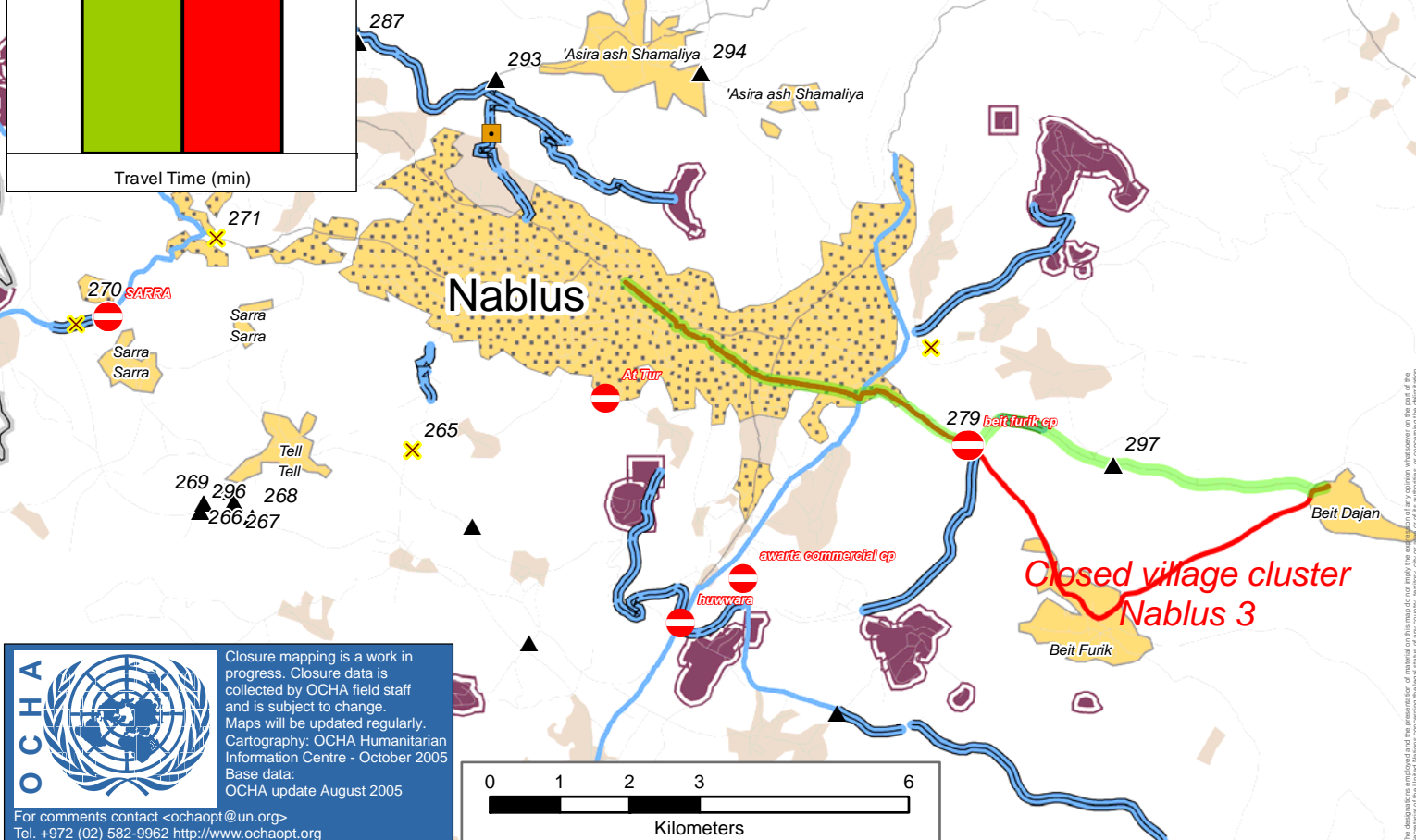
- Partially Prohibited
- Restricted Use
- Totally Prohibited

Localities

- Closed Villages
- Palestinian localities
- Natural center

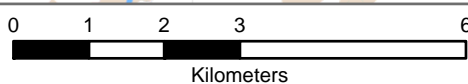
Access routes

- Road used today
- Road prior to Intifada



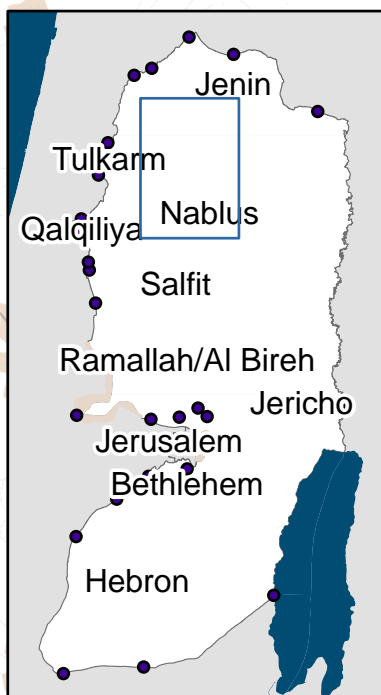
Closure mapping is a work in progress. Closure data is collected by OCHA field staff and is subject to change. Maps will be updated regularly. Cartography: OCHA Humanitarian Information Centre - October 2005. Base data: OCHA update August 2005.

For comments contact <ochaopt@un.org>
Tel. +972 (02) 582-9962 <http://www.ochaopt.org>



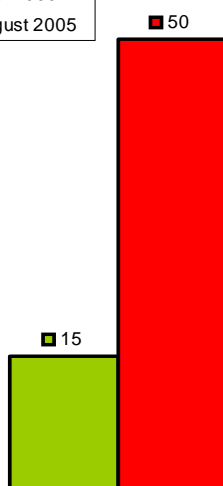
Closed Villages Project - Villages isolated from their natural centers

Palestinians without permits (the large majority of the population)



Comparing situations Pre-Intifada and August 2005

■ Year 2000
■ August 2005



Travel Time (min)

Nablus 4 cluster

In 2005, the Nablus 4 cluster is cut off by a road-gate and held between Sarra and Beit Iba checkpoints. None of these restrictions existed in 2000.

Village	Population
Qusin	1786
Total Population:	
1786	

Closures

- Checkpoint
- Earthmound
- Partial Checkpoint
- Road Gate
- Roadblock
- Under / Overpass
- Constructed Barrier
- Projected Barrier
- Under Construction

Prohibited Roads

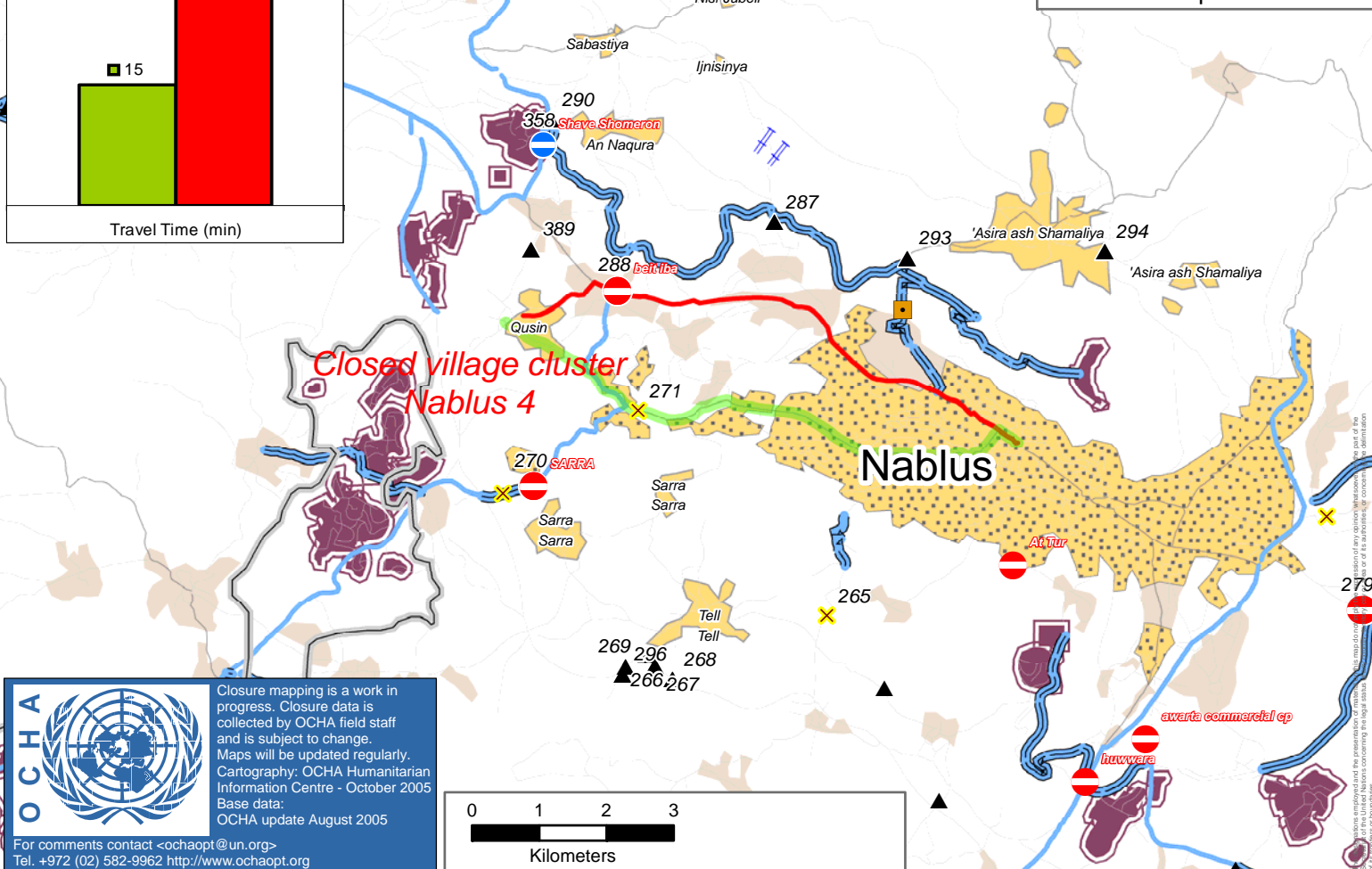
- Partially Prohibited
- Restricted Use
- Totally Prohibited

Localities

- Closed Villages
- Palestinian localities
- Natural center

Access routes

- Road used today
- Road prior to Intifada

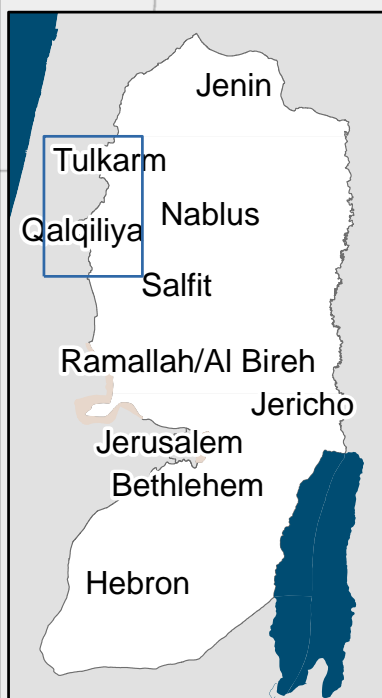


Closure mapping is a work in progress. Closure data is collected by OCHA field staff and is subject to change. Maps will be updated regularly. Cartography: OCHA Humanitarian Information Centre - October 2005. Base data: OCHA update August 2005.

For comments contact <ochaopt@un.org>
Tel. +972 (02) 582-9962 <http://www.ochaopt.org>

Closed Villages Project - Villages isolated from their natural centers

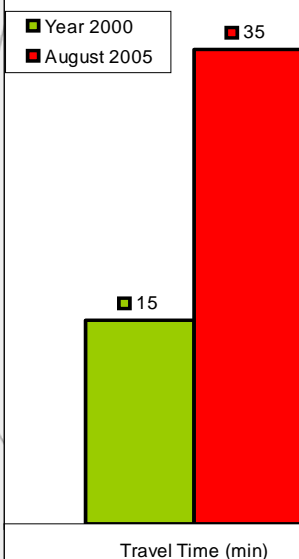
Palestinians without permits (the large majority of the population)

**Qalqiliya 1 cluster**

Prior to 2000, Palestinians could access Qalqiliya freely from this cluster. In 2005, the wall separates them from the West Bank and they must pass Ras at Tira gate or Jaljoulia checkpoint to access their markets.

Village	Population
Wadi ar Rasha	100
Ras at Tira	318
Ad Dab'a	216
'Arab Abu Farda	95
'Arab ar Ramadin al Janu	199
Total Population:	928

Comparing situations Pre-Intifada and August 2005

**Closures**

- Checkpoint
- Earthmound
- Partial Checkpoint
- Road Gate
- Roadblock
- Under / Overpass
- Constructed Barrier
- Projected Barrier
- Under Construction

Prohibited Roads

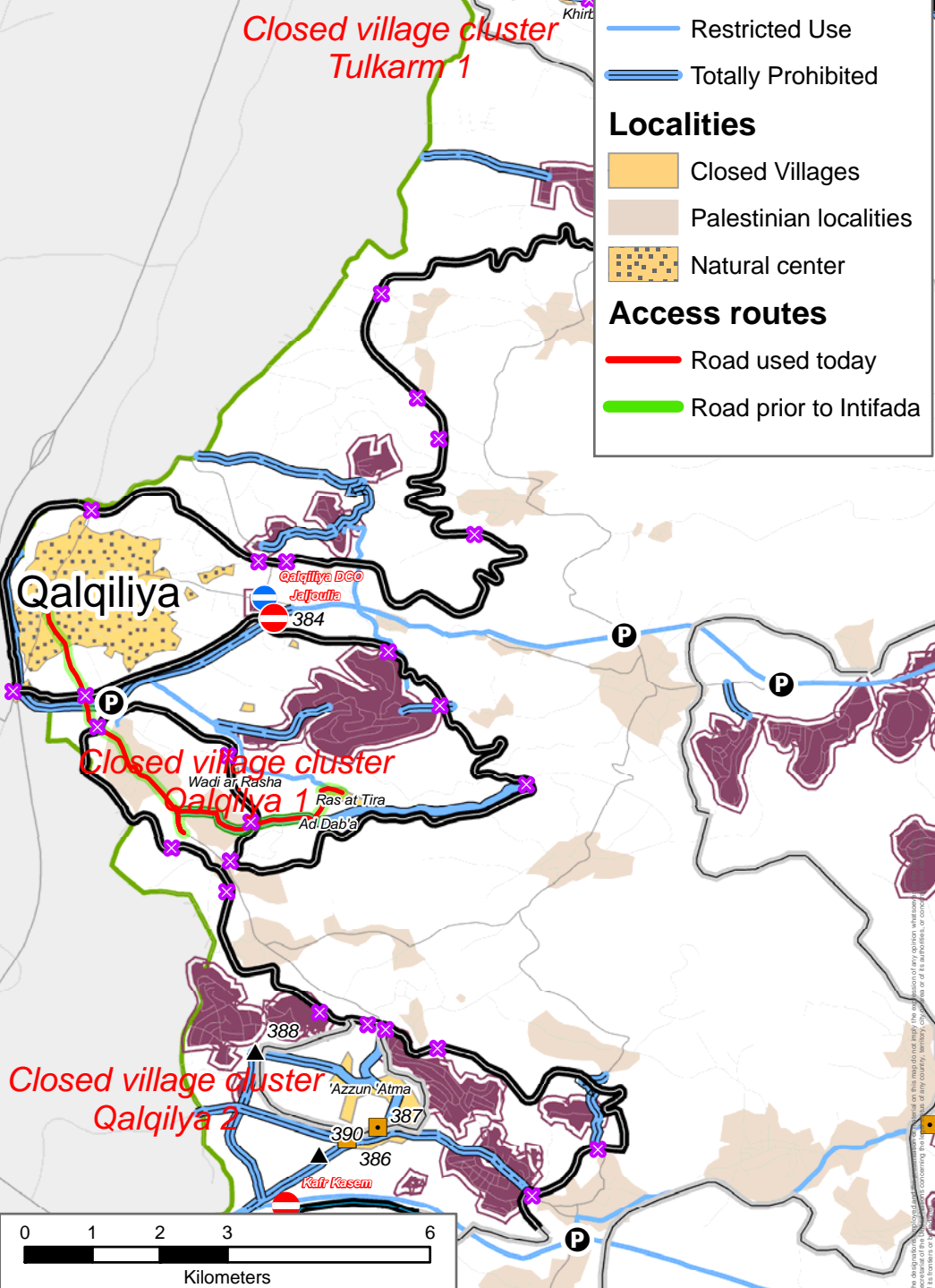
- Partially Prohibited
- Restricted Use
- Totally Prohibited

Localities

- Closed Villages
- Palestinian localities
- Natural center

Access routes

- Road used today
- Road prior to Intifada

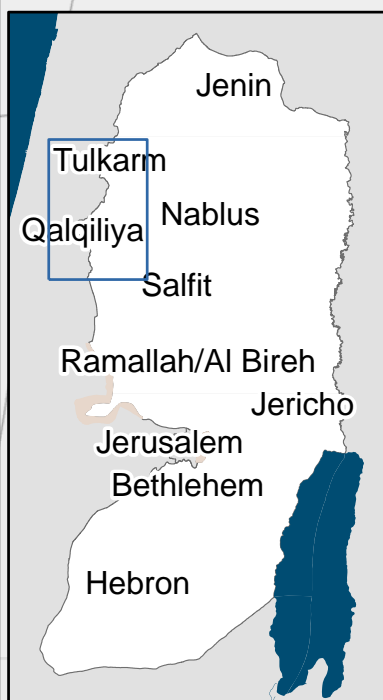


Closure mapping is a work in progress. Closure data is collected by OCHA field staff and is subject to change. Maps will be updated regularly. Cartography: OCHA Humanitarian Information Centre - October 2005. Base data: OCHA update August 2005.

For comments contact <ochaopt@un.org>
Tel. +972 (02) 582-9962 <http://www.ochaopt.org>

Closed Villages Project - Villages isolated from their natural centers

Palestinians without permits (the large majority of the population)



Comparing situations Pre-Intifada and August 2005

- Year 2000
- August 2005

INACCESSIBLE BY CAR

Travel Time (min)

Qalqiliya 2 cluster

In 2000, Palestinians from 'Azzun 'Atma travelled into Qalqiliya in 15min. In 2005, the Wall separates them from the West Bank. To access services they must pass through a gate in the Wall and circumvent the Wall around Alfe Menashe settlement; a 25 min detour.

Village	Population
'Azzun 'Atma	1711
Total Population:	1711

Closures

- ⊘ Checkpoint
- ▲ Earthmound
- ⊕ Partial Checkpoint
- ✕ Road Gate
- Roadblock
- P Under / Overpass
- Constructed Barrier
- Projected Barrier
- Under Construction

Prohibited Roads

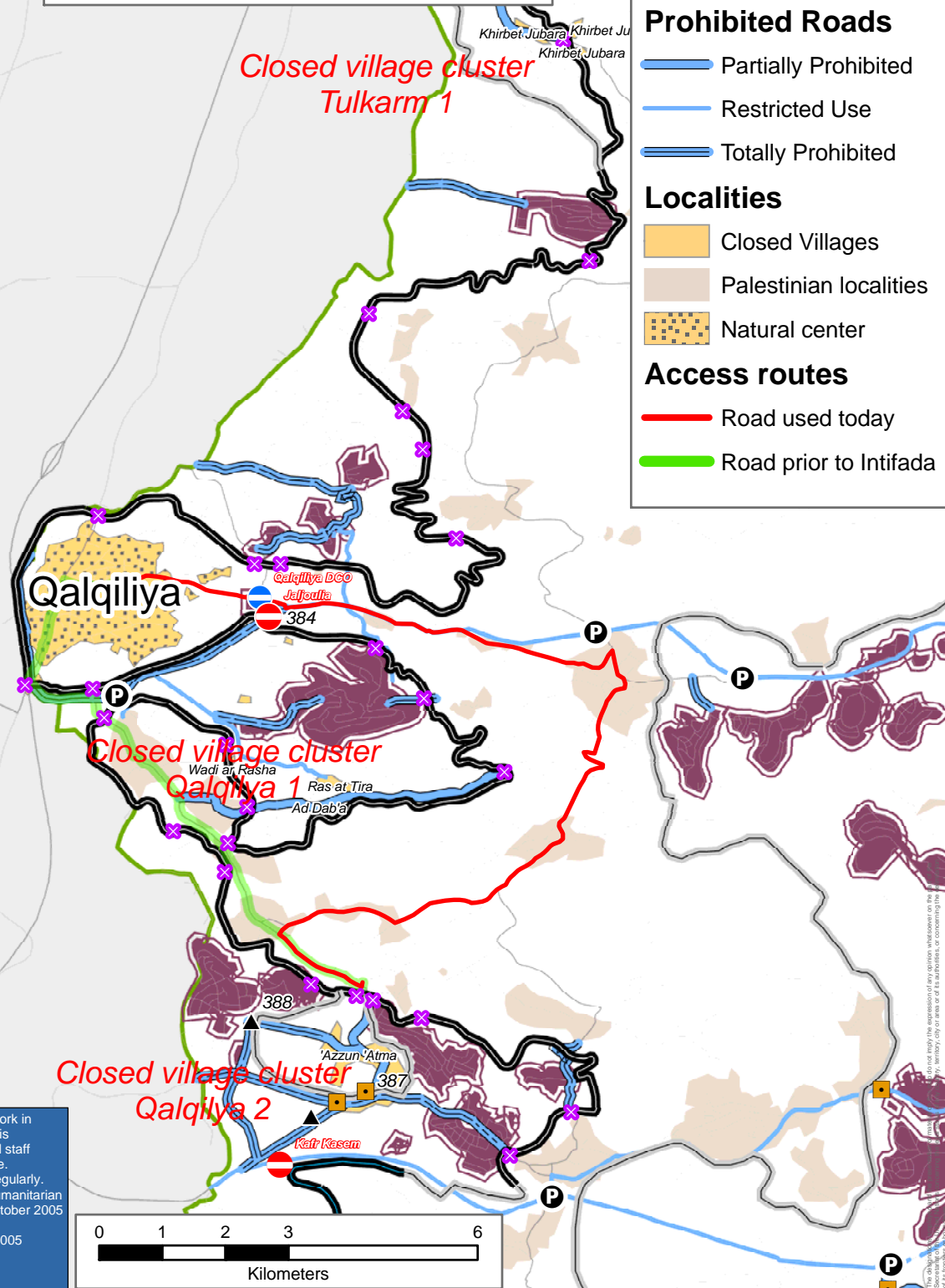
- Partially Prohibited
- Restricted Use
- Totally Prohibited

Localities

- Closed Villages
- Palestinian localities
- Natural center

Access routes

- Road used today
- Road prior to Intifada



Closure mapping is a work in progress. Closure data is collected by OCHA field staff and is subject to change. Maps will be updated regularly. Cartography: OCHA Humanitarian Information Centre - October 2005. Base data: OCHA update August 2005.

For comments contact <ochaopt@un.org>
Tel. +972 (02) 582-9962 <http://www.ochaopt.org>

Closed Villages Project - Villages isolated from their natural centers










Palestinians without permits (the large majority of the population)

**Ramallah 1 cluster**




Access to Ramallah from the east, south and north can only be done through Atara Bridge partial checkpoint located 11km north of Ramallah city.

Village	Population
Beitin	3125
Deir Dibwan	7093
Burqa	2372
'Ein Yabrud	N/A
Total Population:	12590




Closures

-  Checkpoint
-  Earthmound
-  Partial Checkpoint
-  Road Gate
-  Roadblock
-  Under / Overpass
-  Constructed Barrier
-  Projected Barrier
-  Under Construction



Prohibited Roads

-  Partially Prohibited
-  Restricted Use
-  Totally Prohibited

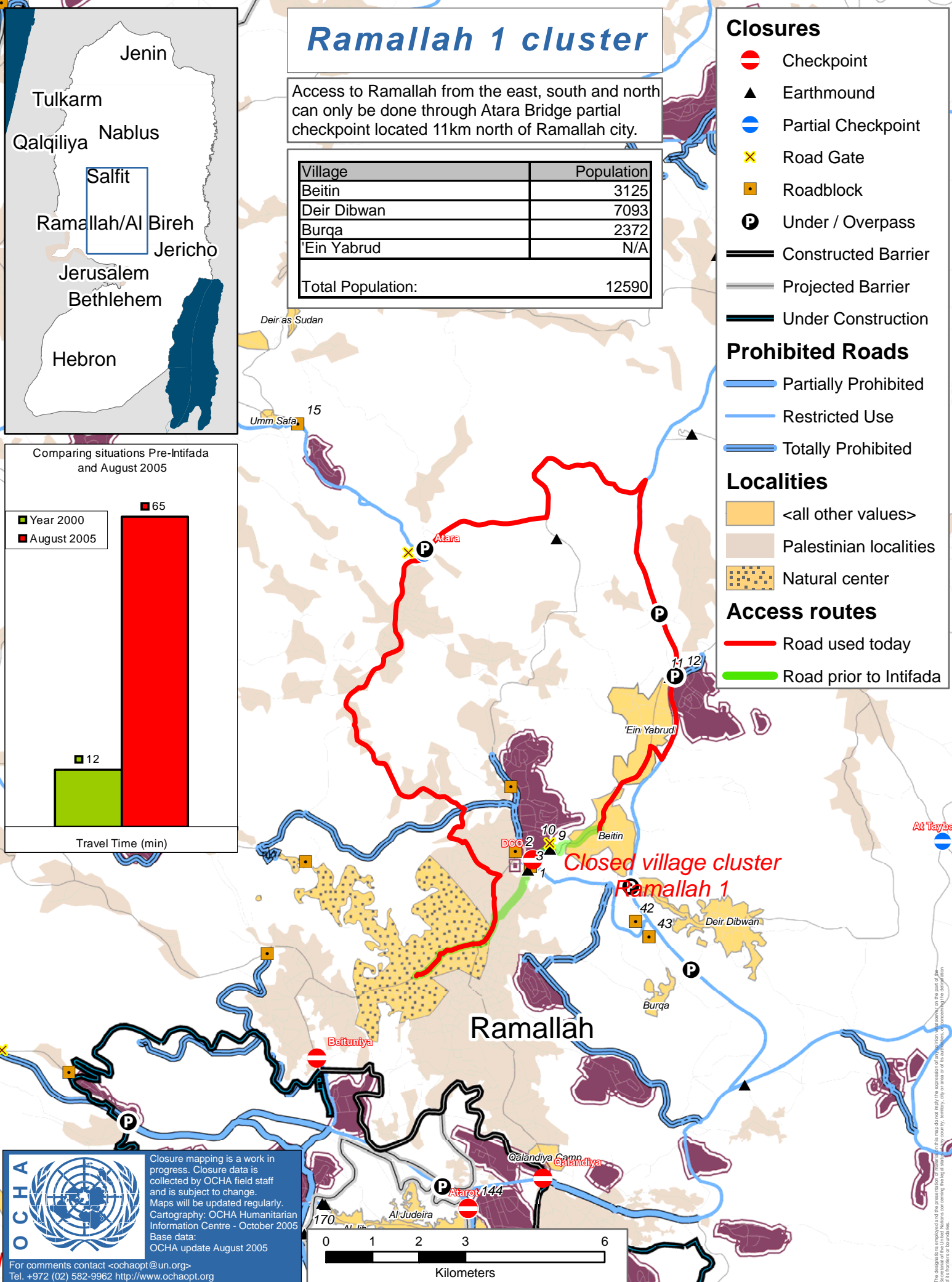
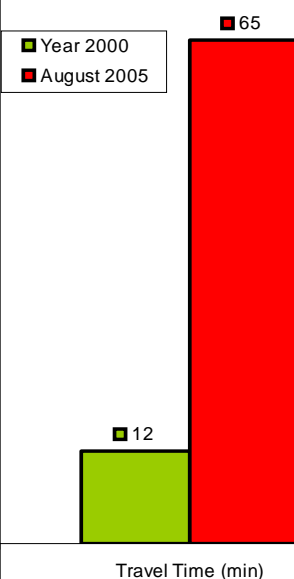
Localities

-  <all other values>
-  Palestinian localities
-  Natural center

Access routes

-  Road used today
-  Road prior to Intifada

Comparing situations Pre-Intifada and August 2005



Closure mapping is a work in progress. Closure data is collected by OCHA field staff and is subject to change. Maps will be updated regularly. Cartography: OCHA Humanitarian Information Centre - October 2005 Base data: OCHA update August 2005

For comments contact <ochaopt@un.org>
Tel. +972 (02) 582-9962 <http://www.ochaopt.org>

Closed Villages Project - Villages isolated from their natural centers










Palestinians without permits (the large majority of the population)

**Ramallah 2 cluster**




Villagers from the Ramallah 3 cluster can no longer use the main roads to access the town center and must use bad quality 4th class roads.

Village	Population
Deir as Sudan	2230
Umm Safa	738
Total Population:	2968




Closures

-  Checkpoint
-  Earthmound
-  Partial Checkpoint
-  Road Gate
-  Roadblock
-  Under / Overpass
-  Constructed Barrier
-  Projected Barrier
-  Under Construction



Prohibited Roads

-  Partially Prohibited
-  Restricted Use
-  Totally Prohibited

Localities

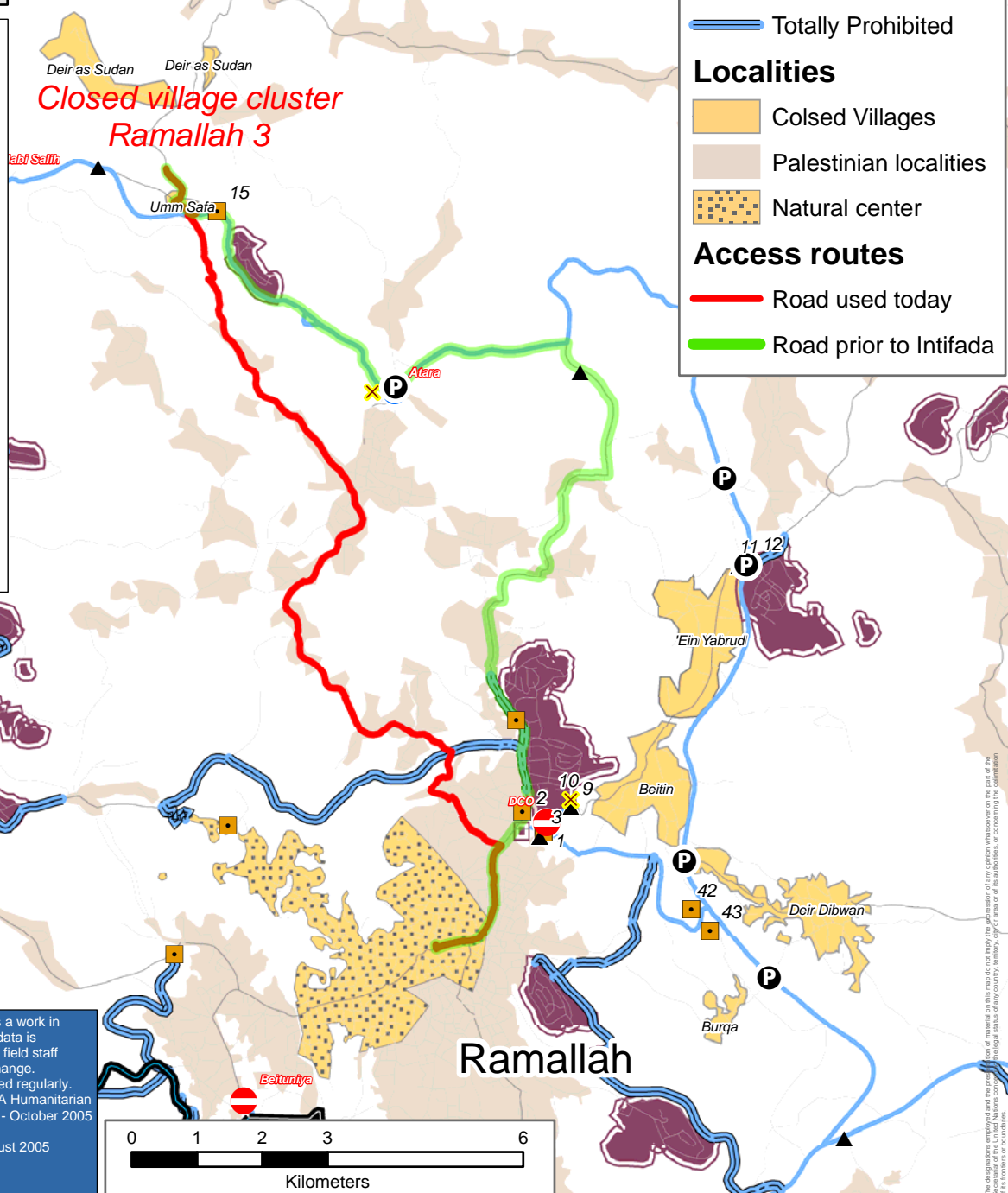
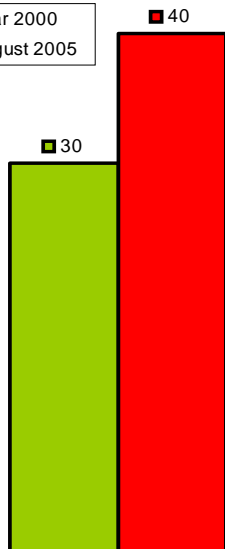
-  Closed Villages
-  Palestinian localities
-  Natural center

Access routes

-  Road used today
-  Road prior to Intifada

Comparing situations Pre-Intifada and August 2005

■ Year 2000
■ August 2005



Closure mapping is a work in progress. Closure data is collected by OCHA field staff and is subject to change. Maps will be updated regularly. Cartography: OCHA Humanitarian Information Centre - October 2005. Base data: OCHA update August 2005.

For comments contact <ochaopt@un.org>
Tel. +972 (02) 582-9962 <http://www.ochaopt.org>

Palestinians without permits (the large majority of the population)

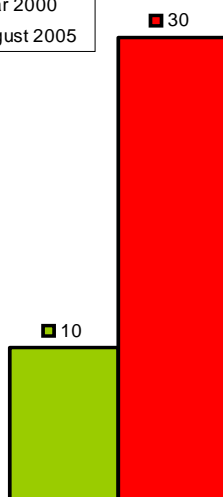
Closed Villages Project - Villages isolated from their natural centers

Palestinians without permits (the large majority of the population)



Comparing situations Pre-Intifada and August 2005

■ Year 2000
■ August 2005



Travel Time (min)

Tulkarm 1 cluster

Khirbet Jubara is isolated from Tulkarm by the barrier. The inhabitants must now travel through Kafriat checkpoint and can no longer receive visitors.

Village	Population
Khirbet Jubara	336
Total Population:	336

Closures

- Checkpoint
- Earthmound
- Partial Checkpoint
- Road Gate
- Roadblock
- Under / Overpass
- Constructed Barrier
- Projected Barrier
- Under Construction

Prohibited Roads

- Partially Prohibited
- Restricted Use
- Totally Prohibited

Localities

- Closed Villages
- Palestinian localities
- Natural center

Access routes

- Road used today
- Road prior to Intifada

Tulkarm

At Tayba "Tulkarm"

192 Kafriat cp

Khirbet Jubara

Closed village cluster
Tulkarm 1



Closure mapping is a work in progress. Closure data is collected by OCHA field staff and is subject to change. Maps will be updated regularly. Cartography: OCHA Humanitarian Information Centre - October 2005. Base data: OCHA update August 2005.

For comments contact <ochaopt@un.org>
Tel. +972 (02) 582-9962 <http://www.ochaopt.org>

0 1 2 3
Kilometers