

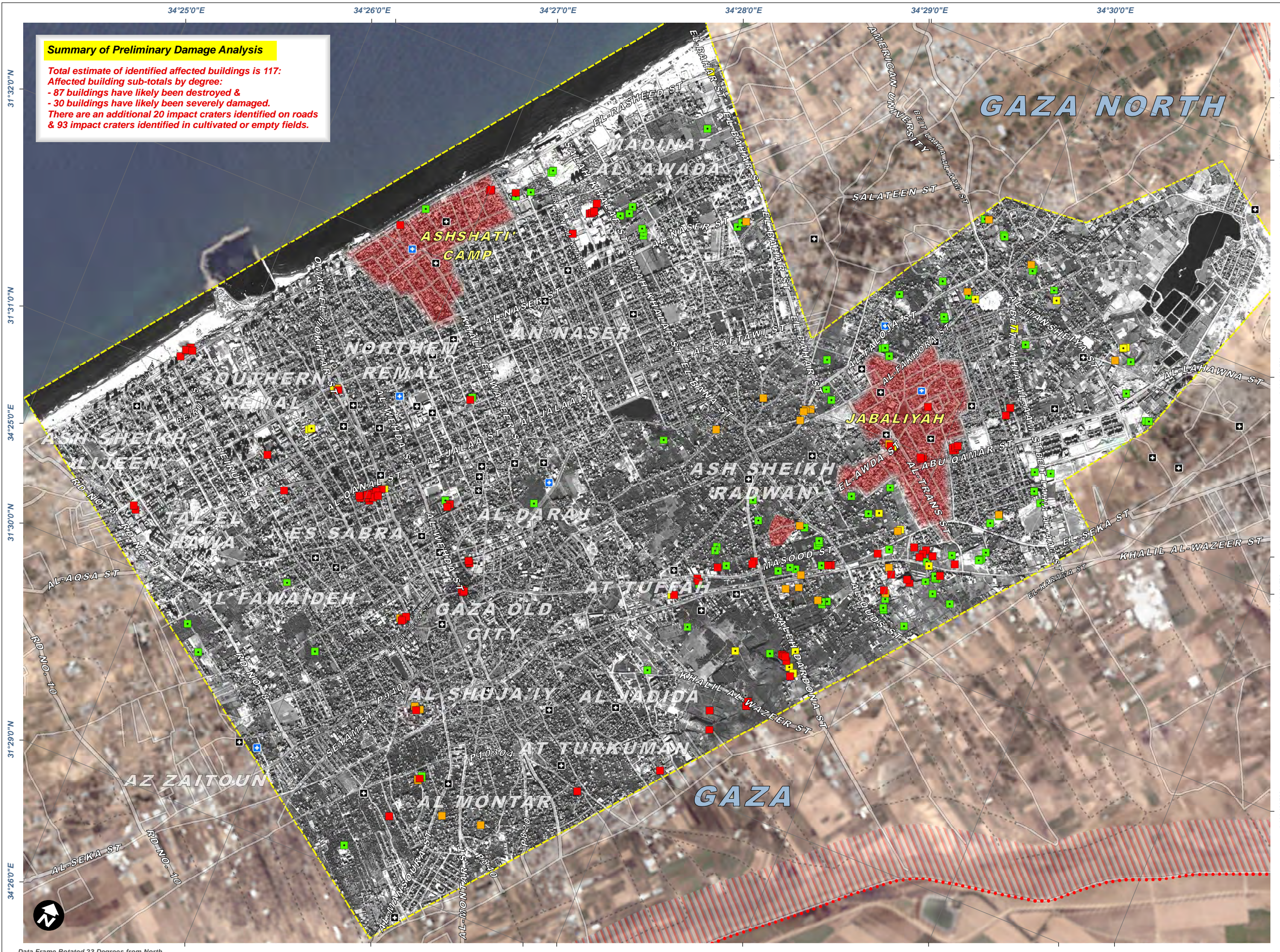
DAMAGE ASSESSMENT OVERVIEW FOR GAZA CITY

Damage Assessment with WorldView-1 Satellite Imagery Recorded on 6 January 2009

This map presents a preliminary and on-going destroyed or severely damaged by standard satellite-based damage assessment for affected areas within Gaza City. Damaged buildings, infrastructure and impact craters have been identified with WorldView-1 satellite imagery acquired on 6 January 2009, and received at a reduced spatial resolution of 2 meters. Pre-crisis Ikonos satellite imagery from June 2005 was also used. Affected buildings were classified either as destroyed or severely damaged by standard image interpretation methods. Destroyed buildings have been defined by the total collapse of the structure or when it was standing but with less than 50% of the roof still intact. Severely damaged buildings were defined as having visible structural damage to a portion of one wall, or where a section of the roof was damaged but with over 50% of the roof still intact.

Please note: Buildings not marked in the map as damaged does not imply the buildings are undamaged, only that damages were not identified with the available satellite imagery at the time of map publication. Because of the reduced spatial resolution of this satellite imagery, the confidence level for damage identification within dense urban areas is significantly reduced. It is highly probable, therefore, that the damages currently identified in this map underestimate the actual building and infrastructure damages present on the ground at the time of satellite acquisition. This damage map will be revised and updated as additional analysis and information is available. Please send any additions/corrections to UNOSAT.

Security Event 9 January 2009
Version 1.0
UNOSAT-2009-000002



Summary of Preliminary Damage Analysis

Total estimate of identified affected buildings is 117:
Affected building sub-totals by degree:
- 87 buildings have likely been destroyed &
- 30 buildings have likely been severely damaged.
There are an additional 20 impact craters identified on roads & 93 impact craters identified in cultivated or empty fields.



Map Legend

SATELLITE DAMAGE ASSESSMENT

- Building: Likely Destroyed (Red square)
- Building: Likely Severely Damaged (Orange square)
- Impact Crater (Road) (Yellow square)
- Impact Crater (Field) (Green square)

ROAD TYPES

- Primary Road (Thick solid line)
- Secondary Road (Thin solid line)
- Unpaved / Track (Dashed line)

HEALTH SITES

- Ministry of Health / Private / NGO (Square with cross)
- UNRWA (Square with plus)

ADMINISTRATIVE / ANALYSIS BORDERS

- 1950 Armistice Line (Red dotted line)
- Extent of Satellite Image Analysis (Yellow dashed line)

LANDCOVER ZONES

- Security Zone (Red hatched area)
- UNRWA-Administered Refugee Camp (Pink hatched area)

Map Scale for A3: 1:35,000

0 125 250 500 750 1,000 1,250 1,500 1,750 Meters

Satellite Image (1) WorldView-1
Resolution 2m (Reduced Resolution)
Imagery Date 6 January (8:13 GMT)
Copyright Digital Globe (2008)
Distribution Eurimage (2008)
Satellite Image (2) Ikonos (2m)
Imagery Copyright GeoEye 2008
Imagery Date 10 August 2008 (08:22 GMT)
Damage Analysis UNOSAT
GIS Data OCHA, GIST, UNOSAT
Projection UTM Zone 36 North
Datum WGS 1984

The depiction and use of boundaries, geographic names and related data shown here are not warranted to be error-free nor do they imply official endorsement or acceptance by the United Nations. This map was produced by the United Nations Institute for Training and Research (UNITAR) Operational Satellite Applications Program (UNOSAT). UNOSAT provides satellite imagery & related geographic information to UN humanitarian & development agencies & their implementing partners.

UNOSAT 
satellite solutions for all
Contact Information: info@unosat.org
24/7 Hotline: +41 76 487 4998
www.unosat.org

Data Frame Rotated 23 Degrees from North 34°27'0"E 34°28'0"E 34°29'0"E 34°30'0"E 34°31'0"E 34°32'0"E 31°30'0"N 31°31'0"N 31°32'0"N 31°33'0"N 31°34'0"N 31°35'0"N