



In numbers



4.4 million total population

33% food insecure in Palestine

57% food insecure in Gaza

19% food insecure in the West Bank

2014 Funding Shortfalls

Gaza 2014 emergency:

US\$ 10 million

PRRO 200037, West Bank:

US\$ 15 million

EMOP 200298, Gaza:

US\$ 5 million

SO 200560, Food Security Sector:

US\$ 611,744



World Food Programme

Country: Palestine - Gaza Emergency

Highlights

- On 24 July, **WFP reached over 160,000 conflict-affected people in Gaza with emergency food assistance, an increase of 50,000 people in just two days.** This is in addition to the 285,000 people WFP reaches regularly with food assistance. The emergency relief includes:
 - Emergency ready-to-eat food for 140,469 displaced people** in Gaza that have taken refuge in UNRWA schools used as shelters and to 10,000 people that are sheltered in public school buildings.
 - Emergency electronic food vouchers to 1,318 displaced families** – approximately 7,908 people – who are living with host families.
 - A total of 2,039 patients and staff in hospitals continue to be assisted** with emergency food rations.

Situation Update

Procured ready-to-eat food:

Commodity type	Metric Tons purchased	Number of people	Coverage days
High Energy Biscuits	20 mt	117,000	4
Milk	168.6 mt	117,000	7
Canned meat	143.17 mt	117,000	9
Canned tuna	94.5 mt	117,000	27

The above mentioned commodities and quantities have been procured, as of 24 July. Additional food is currently being procured.

- Additional wheat flour, canned meat, milk and canned beans are currently being procured and are expected to arrive by the end of the week and early next week.
- To meet the increasing needs for fresh bread, WFP is in the process of contracting an additional fourth bakery in Gaza to cover the needs for the emergency distributions.

WFP Response

Emergency response:

- WFP and UNRWA have a protocol to reach people in emergencies regardless of refugee status, and all beneficiaries are crosschecked against WFP's and UNRWA's existing programme caseload as well as the Food Security Sector, which coordinates all food distributions by NGOs and UN agencies. Currently about two-thirds of the new emergency caseload for conflict-affected families were on WFP's or UNRWA's existing food assistance programme. WFP and UNRWA plan to continue reaching all affected people with emergency food while they are displaced – regardless of status – and to provide a one month 'return food voucher' when the situation stabilizes. Following that, all beneficiaries will return to the normal WFP or UNRWA lists.
- WFP assists approximately 140,469 displaced people in UNRWA shelters with emergency food rations. The food basket has been diversified with WFP now providing bread, canned meat and milk, while UNRWA provides other ready-to-eat commodities and vegetables.
- WFP distributes emergency food rations to 10,000 displaced people at 11 government schools.
- WFP and Oxfam GB are distributing emergency food vouchers to displaced families who are staying in host communities. A total of 1,318 families (7,908 people) have been reached with vouchers. Families can use the voucher to buy locally produced food at local shops and after the launch of WFP-UNICEF partnership, families also have the option to buy water and sanitation products. The vouchers have an overall value of approximately US\$ 128 (440 NIS) per month, for an average family of six. Approximately 85 percent of the families have purchased non-food items this week, such as water and sanitation products.
- WFP is reaching approximately 2,040 patients and hospital staff emergency food rations.

General food distributions:

- Security conditions do not allow WFP to push up the July-August distribution cycle. The distribution will instead start the first week of August, as planned initially.

Food voucher programme:

- Approximately 59 percent of the families have redeemed their voucher today, noting that households can redeem the amount of their vouchers till the end of the month.
- Out of WFP's 60 voucher shops in Gaza, a total of 47 were open today.

Monitoring

Due to the current security situation in Gaza, WFP's is ensuring remote monitoring, mostly via telephone calls to traders and shops.

Basic commodities:

- No major price changes have been reported for basic commodities.
- All types of vegetables are available, but in less quantities because farmers cannot access their lands due to the security situation. Prices of some vegetables have gone up, mainly for tomatoes, cucumbers and lemons.

Wheat and bakeries:

- There are approximately fifty bakeries in Gaza and half of these bakeries do not operate due to the difficulties in accessing their premises, while operating bakeries have wheat stocks for at least one week.
- Four out of six mills in Gaza are closed due to security reasons because there is no access to their premises due to the security situation. The mills are located in the in the eastern, northern and middle areas. The total stock of wheat for these mills is 3,150 mt.
- Fuel stock at WFP contracted bakeries: Al Bann has a stock to cover at least 20 days, Ajour has a stock that covers the needs for 30 days, and Al Jonoub bakery has a stock to cover their needs for at least 30 days.

Dairy products:

- Importers of dairy products from the West Bank keep a stock for two weeks. Local dairy products are also available and could cover shortages in Gaza in the event of a closure of Kerem Shalom cargo crossing.

Field observations:

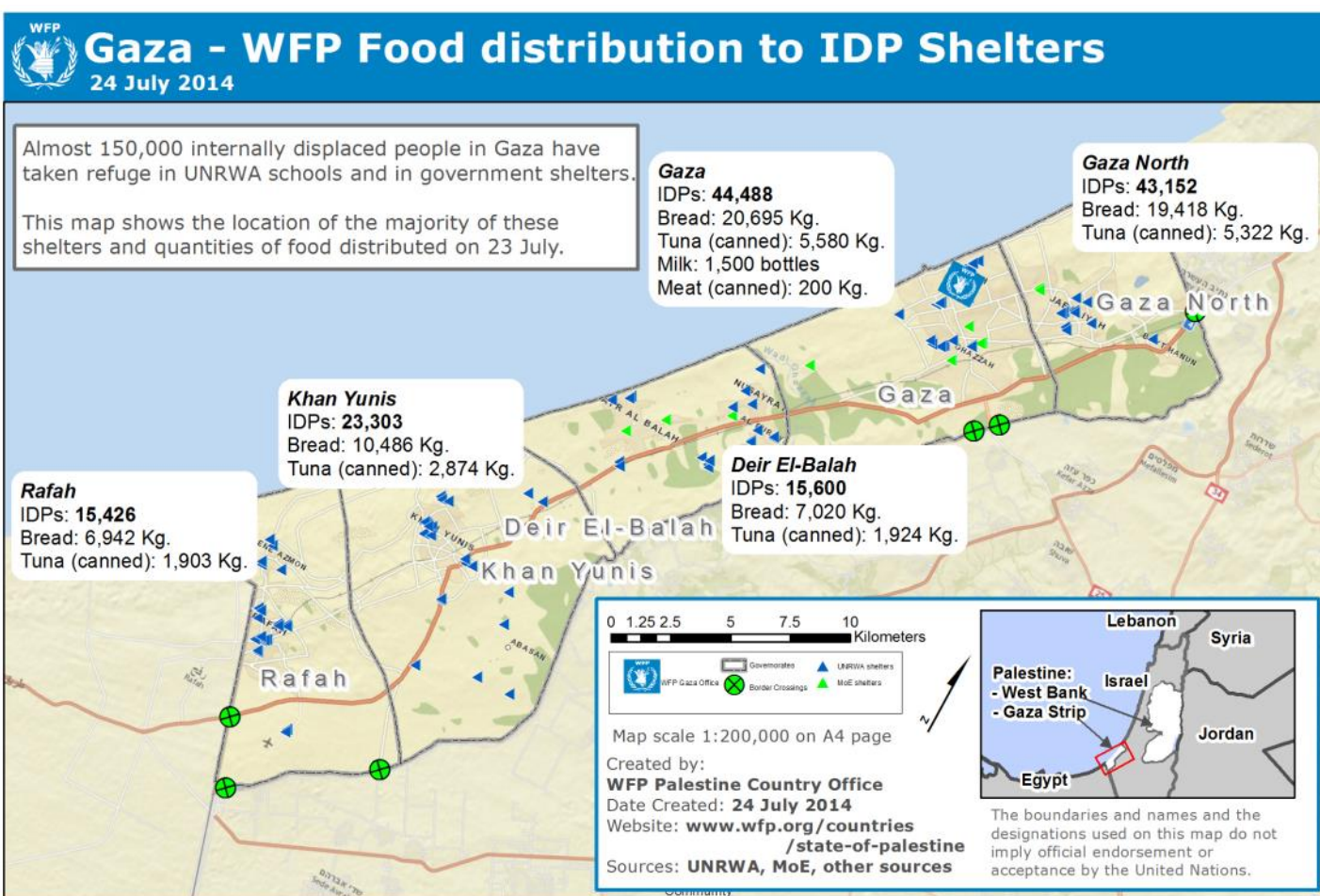
- Streets in Gaza are empty and shops are closed early. People only leave their houses to purchase the very essential, particularly food.

Food Security Sector & Clusters

- The Food Security Sector (FSS) is preparing an in-depth food security needs assessment, using smart phones to collect data. The assessment will take place as soon as the circumstances in Gaza allow.
- WFP is preparing the possible activation of the logistics cluster.

Resourcing Update

- **WFP urgently needs approximately US\$ 10 million to reach conflict-affected people in Gaza.** WFP's core humanitarian programmes in Palestine are facing critical funding shortfalls. The estimated funding requirements for all operations until the end of 2014 are US\$ 20 million: US\$ 5 million in Gaza and US\$ 15 million in the West Bank.



Contacts

Rossella Fanelli
Head of External Relations
Email: Rossella.fanelli@wfp.org
Tel: [+972] 2 5401340 2210

Yasmine Abuelassal
Donor Relations
Email: Yasmin.abuelassal@wfp.org
Tel: [+972] 2 5401340 2215

Colin Kampschöer
Reports Officer
Email: Colin.kampschoer@wfp.org
Tel: [+972] 54 677 3136

Palestine

www.wfp.org/countries/state-of-palestine

