



World Food Programme

Country: Palestine - Gaza Emergency, July 2014



In numbers



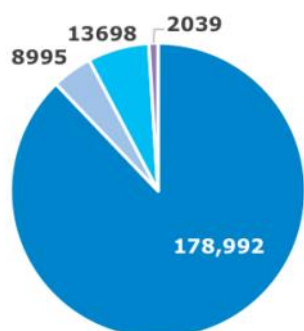
4.4 million total population

33% food insecure in Palestine

57% food insecure in Gaza¹

19% food insecure in the West Bank

WFP's emergency food assistance in Gaza by affected group (29 July 2014)



■ IDP's at UNRWA shelters ■ IDP's at public shelters
■ IDP's at host communities ■ Patients and hospital staff

Highlights

- **The Logistics Cluster is being formally activated.** Under the leadership of WFP, the Logistics Cluster will reinforce the capacity of aid organisations to facilitate the entry of humanitarian goods and personnel to Gaza. The first meeting will be held Wednesday, 30 July.
- **WFP is reassessing the additional funding requirements** following the rapid increase in food needs in Gaza and is preparing an updated funding appeal.
- Tuesday, **WFP has reached 203,724 conflict-affected people in Gaza with emergency food assistance.** This is in addition to the 285,000 people WFP reaches regularly with food assistance. The emergency relief includes:
 - **Emergency ready-to-eat food for 178,992 displaced people** who have taken refuge in UNRWA schools used as shelters and to 8,995 people that are sheltered in public school buildings.
 - **Emergency electronic food vouchers** to 2,283 displaced families – approximately 13,698 people – who are living with host families.
 - **A total of 2,039 patients and staff in hospitals continue to be assisted** with emergency food rations.

Situation Update

- With WFP's current stock and procured commodities, the needs of the people can be covered for up to five days. WFP is rapidly procuring additional items in the West Bank and internationally.
- WFP's warehouse in Deir Al Balah, an area that witnessed intense fighting in the last weeks, was finally accessed during a lull in fighting on 28 July. Staff found that the warehouse is damaged by shrapnel from nearby fighting. WFP is removing the food from the warehouse as soon as possible and will not use the warehouse again during the conflict to avoid staff risks and risks to the food stocks from the conflict.
- Today no WFP trucks entered Gaza, while on 28 July, WFP coordinated the crossing of two trucks with

1. According to the results of the latest food security assessment, which was held prior to the Gaza emergency.

wheat flour. On 30 July, one truck with food items and non-food items will cross into Gaza, as well as one truck with wheat flour which will be delivered directly to the bakeries.

WFP Response

EMERGENCY RESPONSE TO CONFLICT-AFFECTED PEOPLE IN GAZA:

- **FOOD FOR UNRWA SHELTERS:** WFP assists approximately **178,992** displaced people in 85 UNRWA shelters with emergency food rations. The food basket has been diversified with WFP now providing bread, canned meat and milk, while UNRWA provides other ready-to-eat commodities and vegetables. Starting 28 July, WFP and UNRWA have reduced the bread ration in response to high demand for bread due to the increase in affected people.
- **FOOD FOR PUBLIC SCHOOL SHELTERS:** WFP distributes emergency food rations to 8,995 displaced people at 12 public shelters.
- **VOUCHERS FOR FAMILIES SHELTERING IN HOST COMMUNITIES:** WFP and Oxfam GB are distributing emergency food vouchers to displaced families who are staying in host communities. A total of 2,283 families (approximately 13,698 people) have been reached with vouchers. Families can use the voucher to buy locally produced food at local shops and after the launch of WFP-UNICEF partnership, families also have the option to buy water and sanitation products. The vouchers have an overall value of approximately US\$ 128 (440 NIS) per month, for an average family of six.
- WFP is currently assessing requests to provide voucher assistance to an additional 2,800 displaced families who are sheltered at host communities. Together with Oxfam GB, WFP is crosschecking recipient lists to avoid duplication, and is preparing to distribute new voucher cards.

- **FOOD FOR HOSPITALS:** WFP is reaching approximately 2,040 patients and hospital staff emergency food rations.

WFP's ONGOING PRE-CONFLICT PROGRAMMES:

- If security conditions permit, WFP will start with the regular July-August food distribution cycle in Gaza next week.
- WFP's regular voucher programme is ongoing during the crisis. The voucher redemption rate in the fourth week stands at 89 percent.
- After the closure of several voucher shops in the areas of Shuja'iyya, Al Tofah and Beit Lahia, WFP is looking to add new voucher shops to the programme to ensure people can access food in the areas affected.

Monitoring

Due to the current security situation in Gaza, WFP's monitoring activities have been mostly restricted to remote monitoring, mostly via telephone calls to traders and shops.

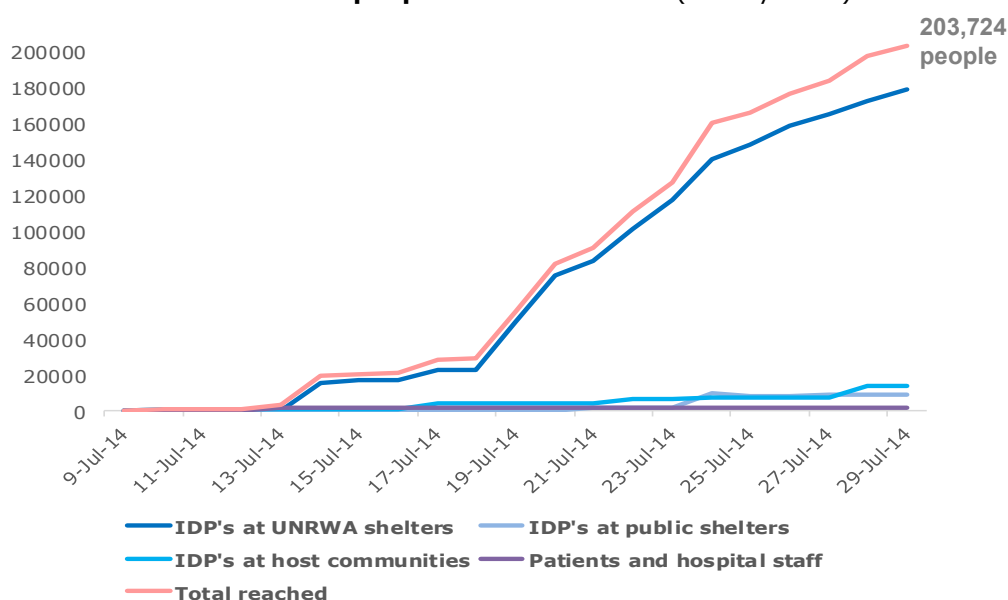
Basic commodities:

- The displacement of a large number of people to certain areas is likely to have an impact on the ability of traders to supply shops with basic commodities. Demands on the market are expected to increase in specific areas with high concentrations of displaced people. Households who are dependent on the availability of food in local shops could be affected.

Wheat and bakeries:

- WFP's six contracted bakeries in Gaza are reaching the maximum of their capacity. Following the increasing demands the bakeries have are facing challenges with their generators and fuel stock.

Conflict-affected people reached in Gaza (29 July 2014)



Other observations:

- Gaza's only power plant was hit by today. Reparations are expected to take months. Electricity supply will be reduced to a minimum for the whole of Gaza and it is expected that without electricity, the bakeries and millers in Gaza will face significant challenges.

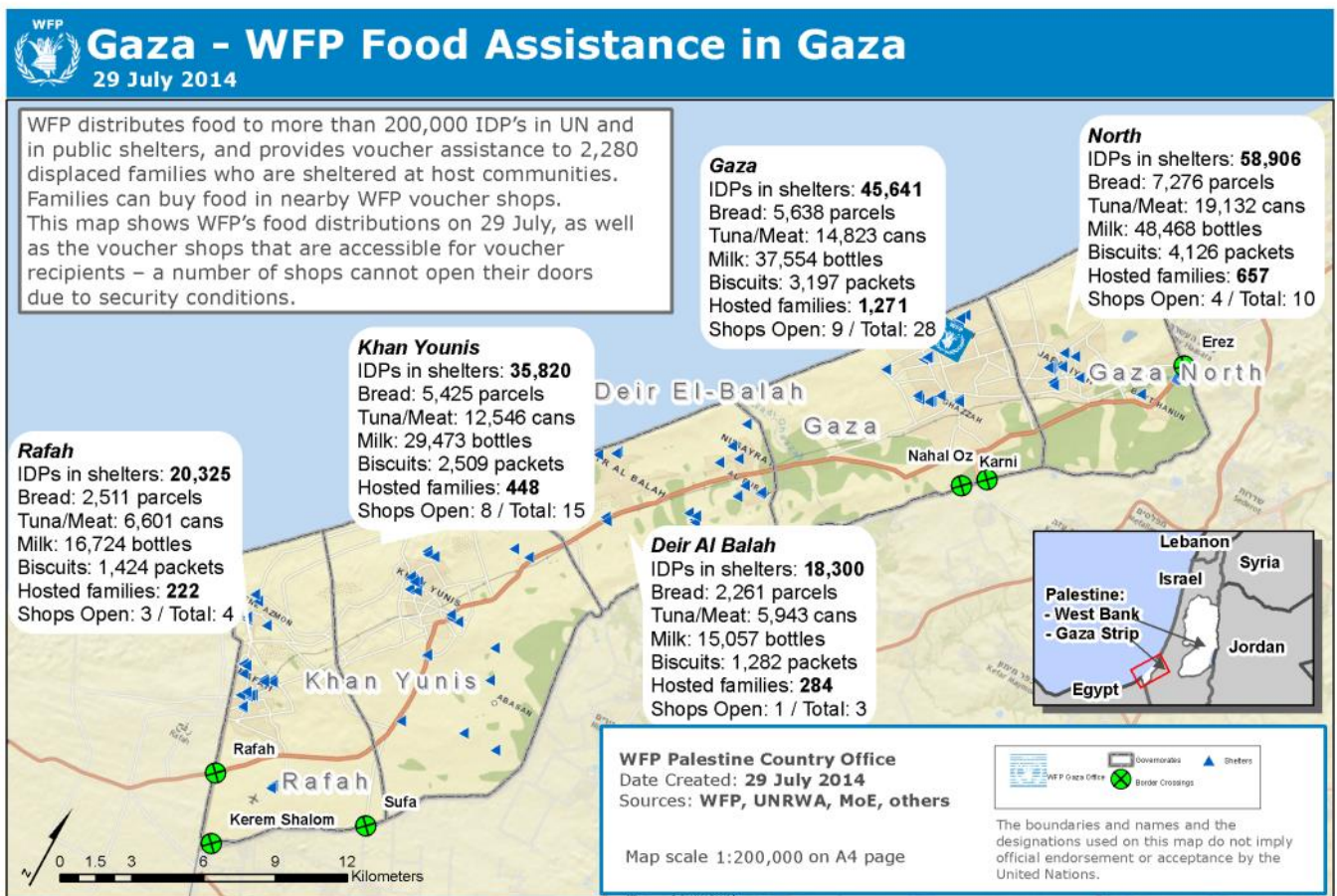
Food Security Sector & Clusters

- The Food Security Sector (FSS) is coordinating the Preliminary Response Plan for addressing immediate needs and urgent post-conflict issues. Today first new projects by FSS partners have been vetted by a panel composed of representatives from FAO, WFP, UNRWA, the Ministry of Social Affairs, the Ministry of Agriculture, and from a local and international NGO.

- The FSS calls on active partners to focus their effort to meet the needs of displaced people who are receiving little or no assistance at all, especially those staying outside institutional structures.
- The Logistics Cluster is being activated and WFP has called forth staff to support the standing up of the cluster. The cluster will meet for the first time on Wednesday, 30 July.

Resourcing Update

- WFP's new funding requirements as a result of the growing needs, both for food and for logistical capacity, will be reflected in the revised Strategic Response Plan (SRP) for Palestine and the Humanitarian Country Team's Gaza Crisis appeal, which will be launched on 1 August in Ramallah.



Contacts

Rossella Fanelli
Head of External Relations
Email: Rossella.fanelli@wfp.org
Tel: [+972] 2 5401340 2210

Yasmine Abuelassal
Donor Relations
Email: Yasmin.abuelassal@wfp.org
Tel: [+972] 2 5401340 2215

Colin Kampschöer
Reports Officer
Email: Colin.kampschoer@wfp.org
Tel: [+972] 54 677 3136

Palestine

www.wfp.org/countries/state-of-palestine

